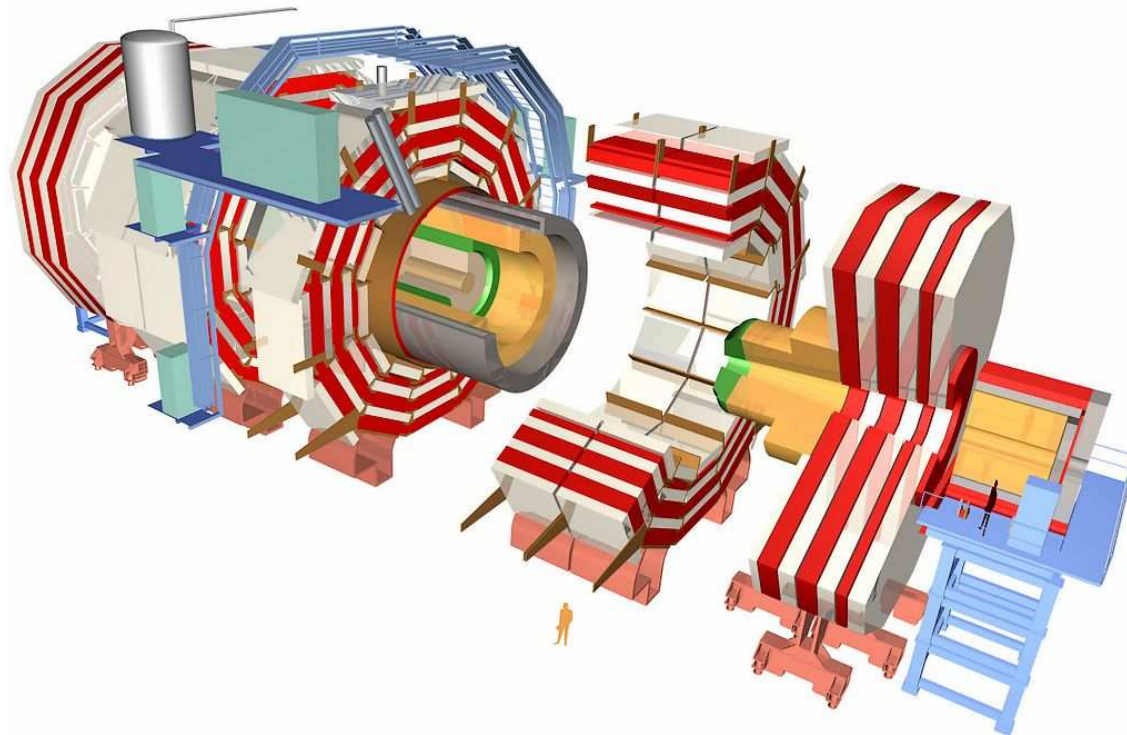
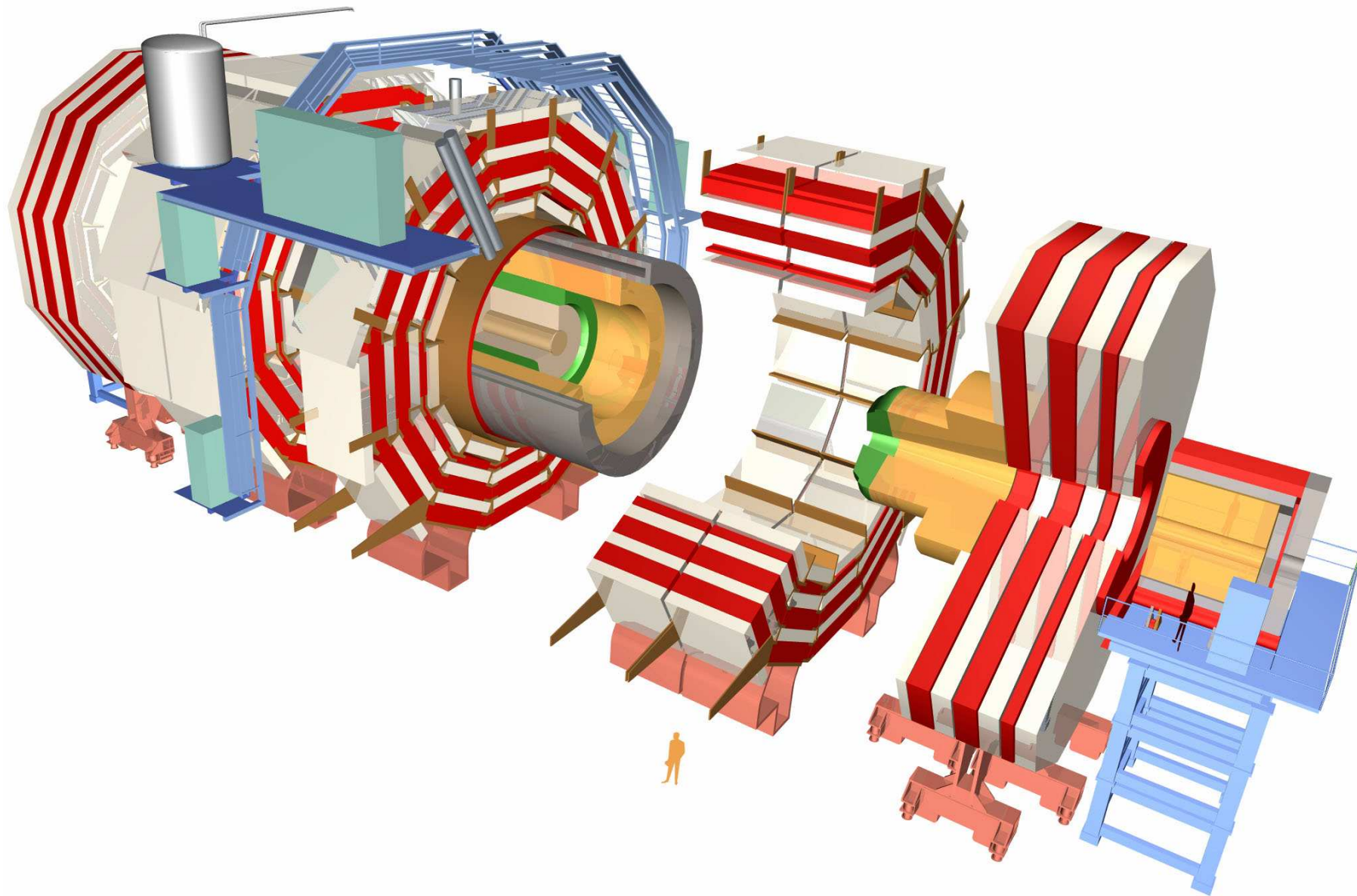


Teil 13: Teilchendetektoren II



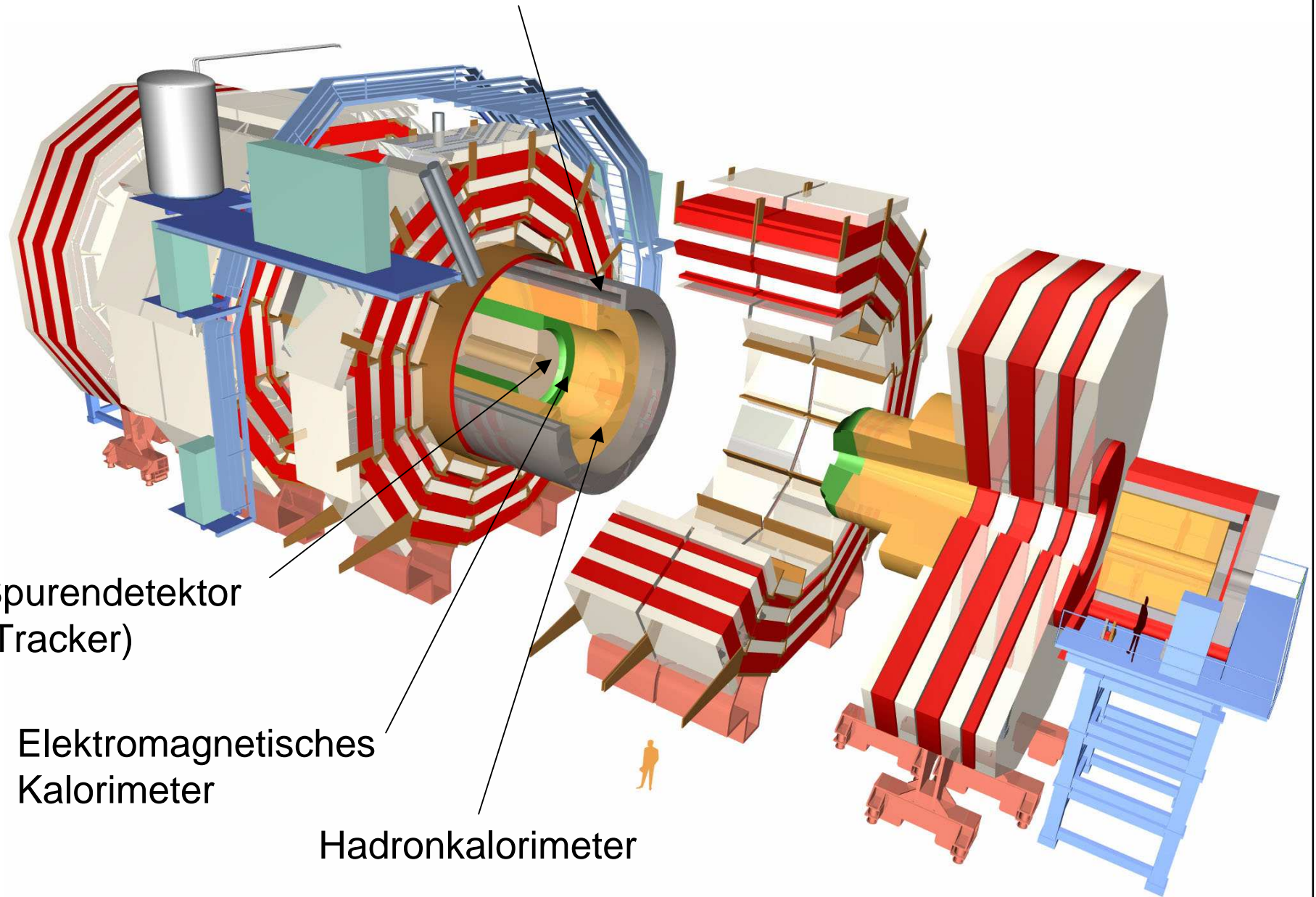


Supraleitende Spule

Spurendetektor
(Tracker)

Elektromagnetisches
Kalorimeter

Hadronkalorimeter



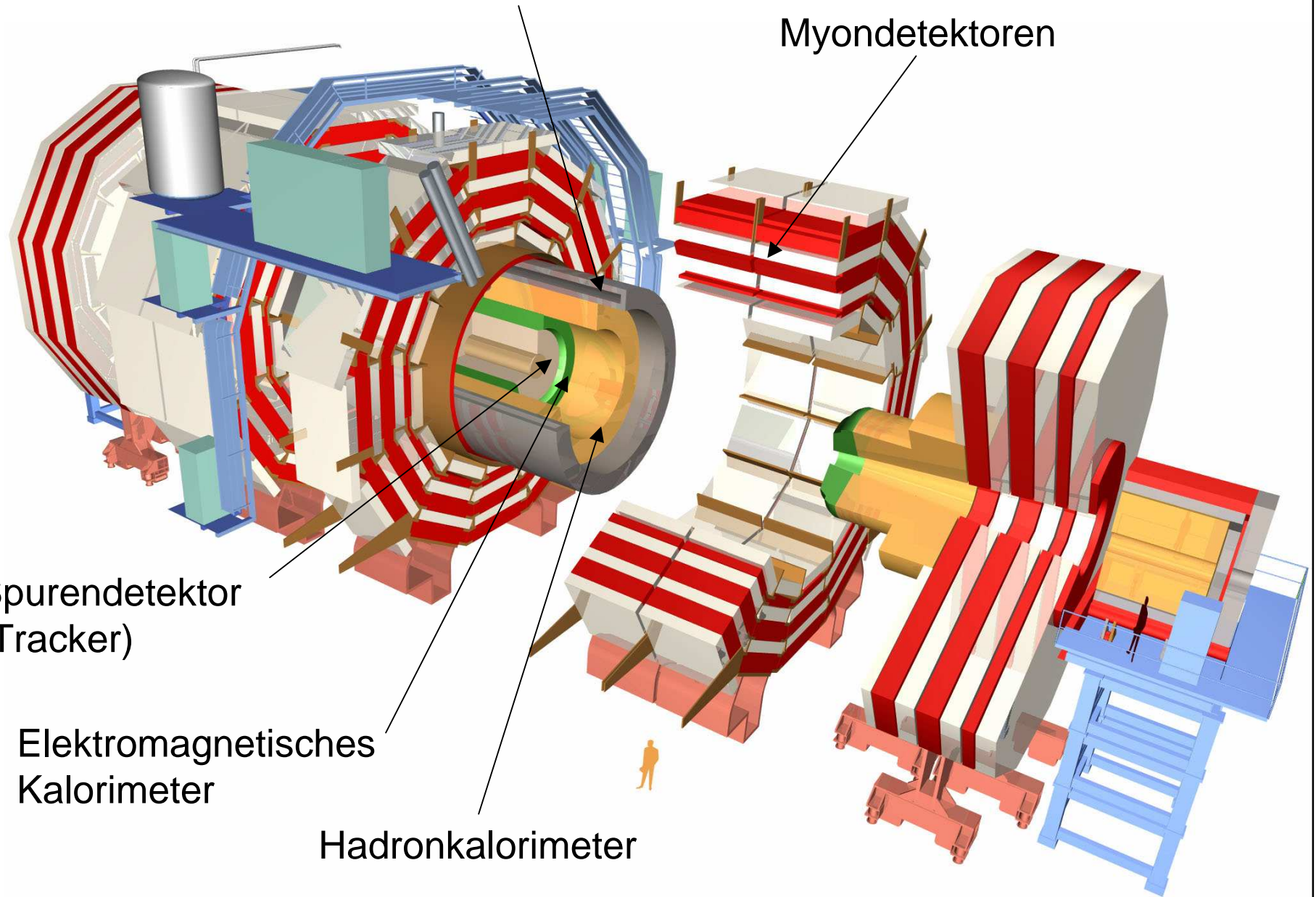
Supraleitende Spule

Myondetektoren

Spurendetektor
(Tracker)

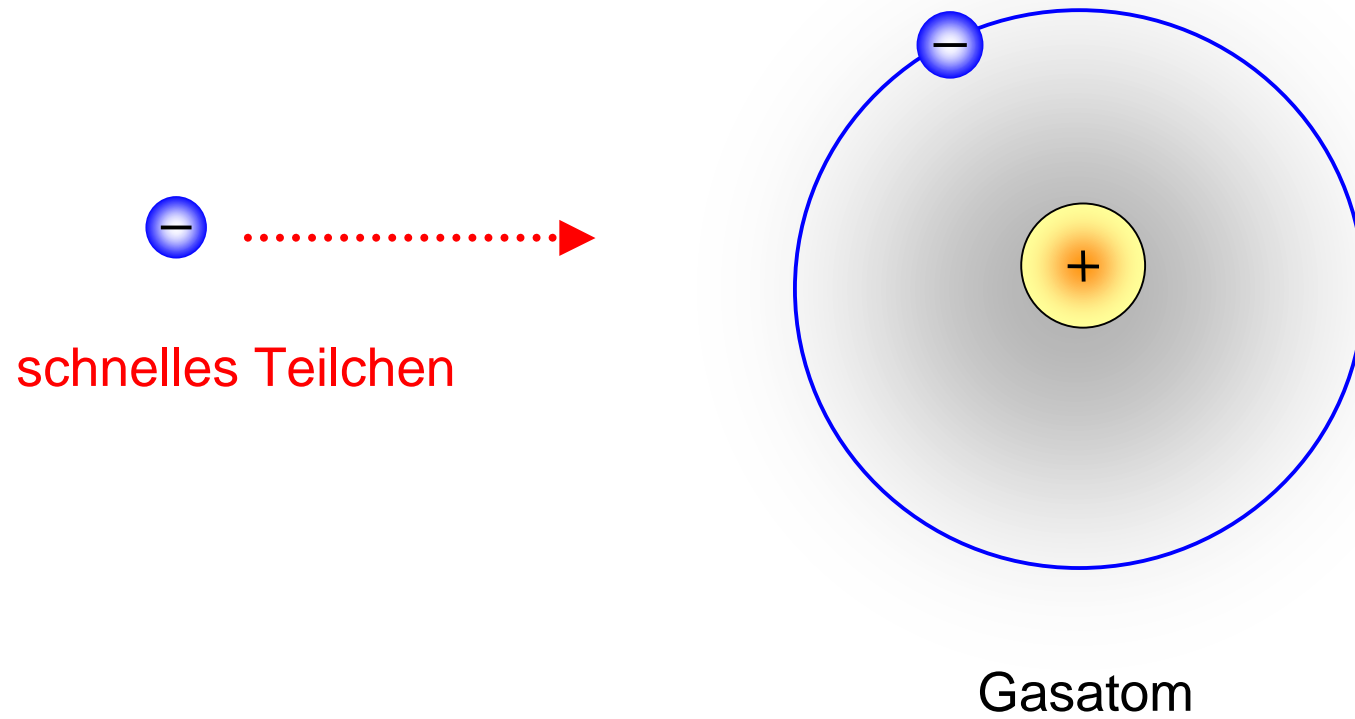
Elektromagnetisches
Kalorimeter

Hadronkalorimeter

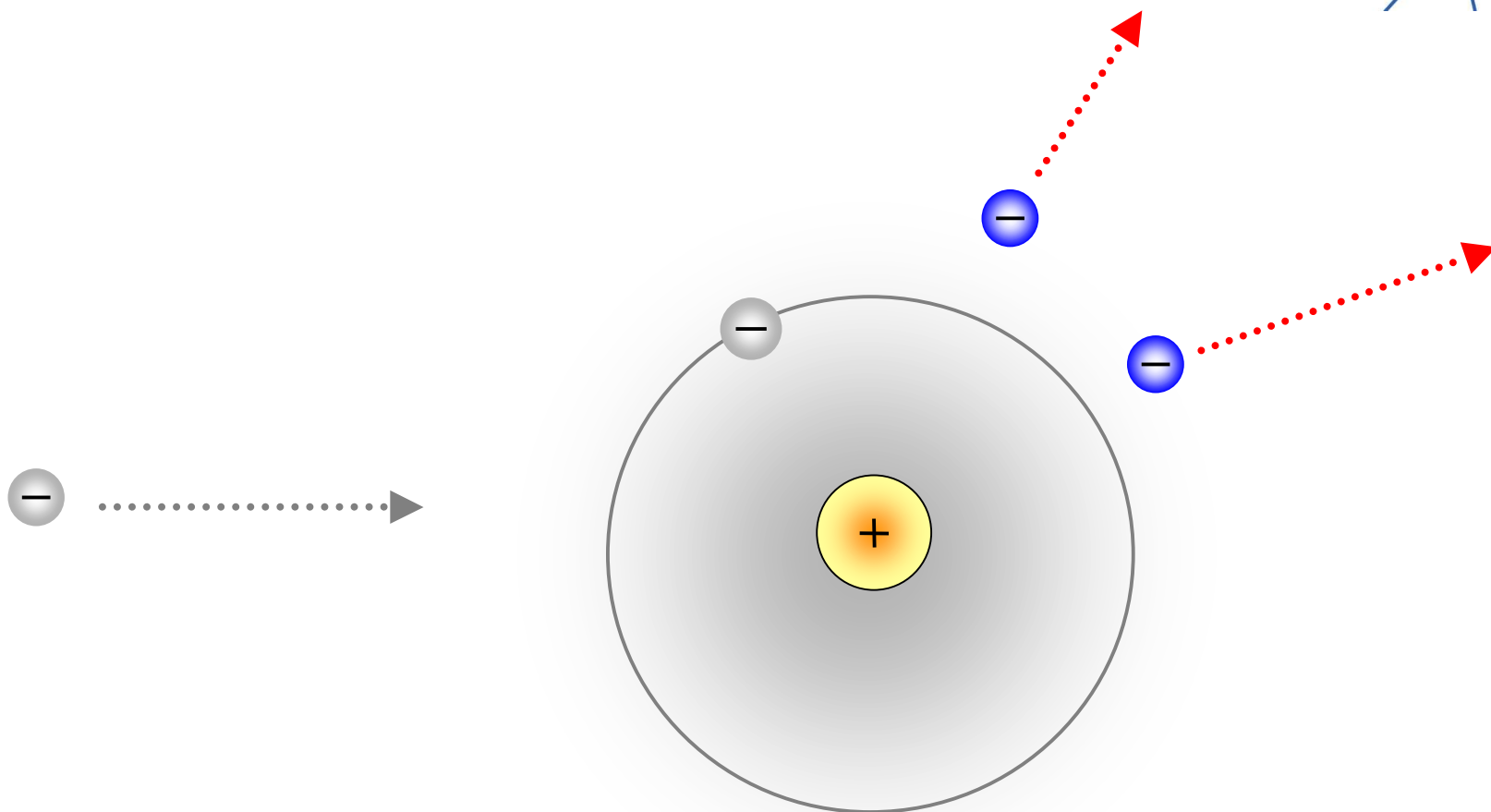




Ionisation



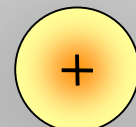
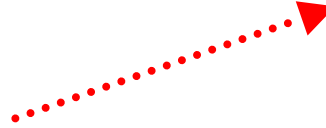
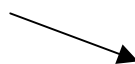
Ionisation



Ionisation



Freie Elektronen



Ion

Geiger-Müller-Zählrohr

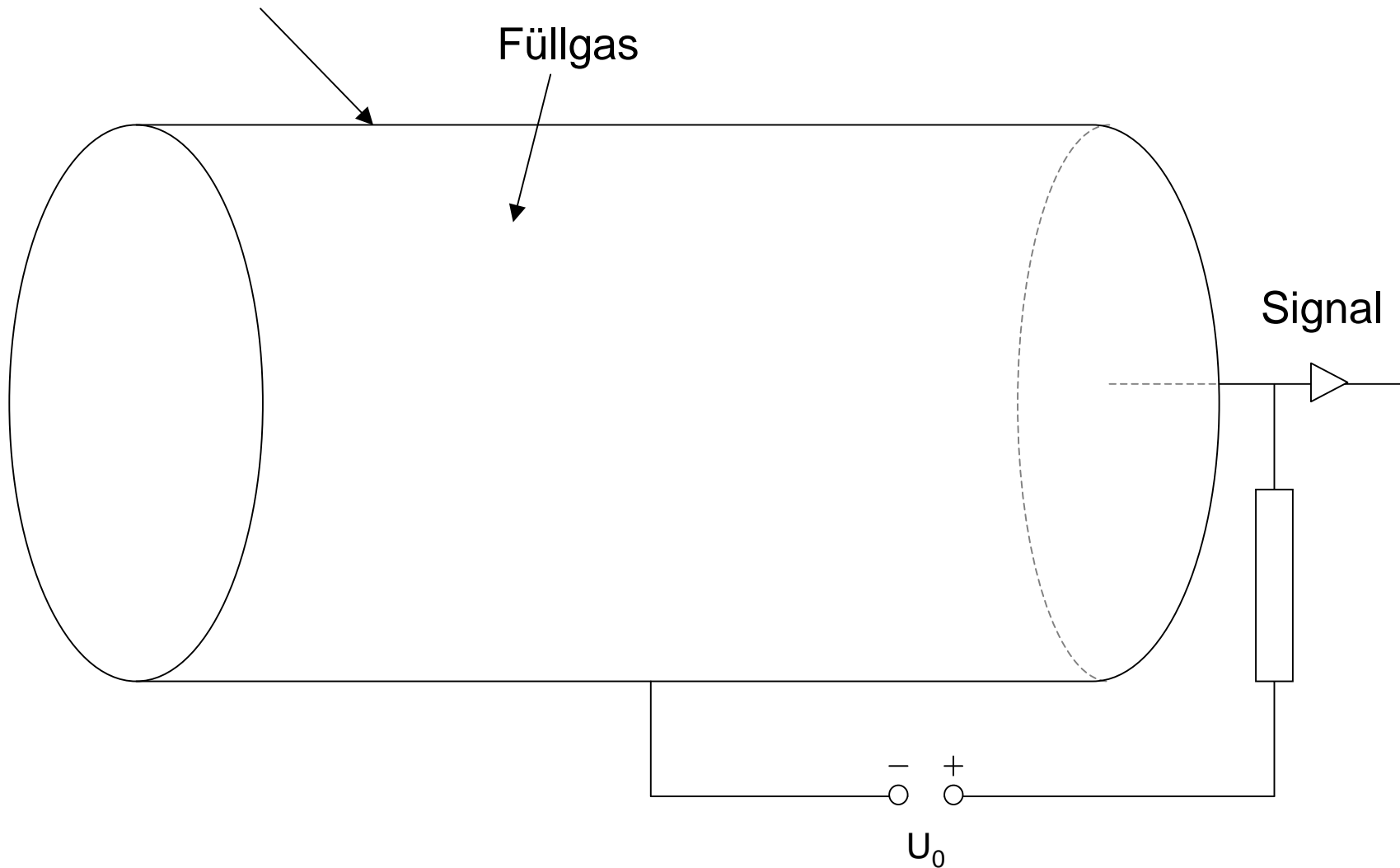


Außenelektrode

Füllgas

Signal

- +
 U_0



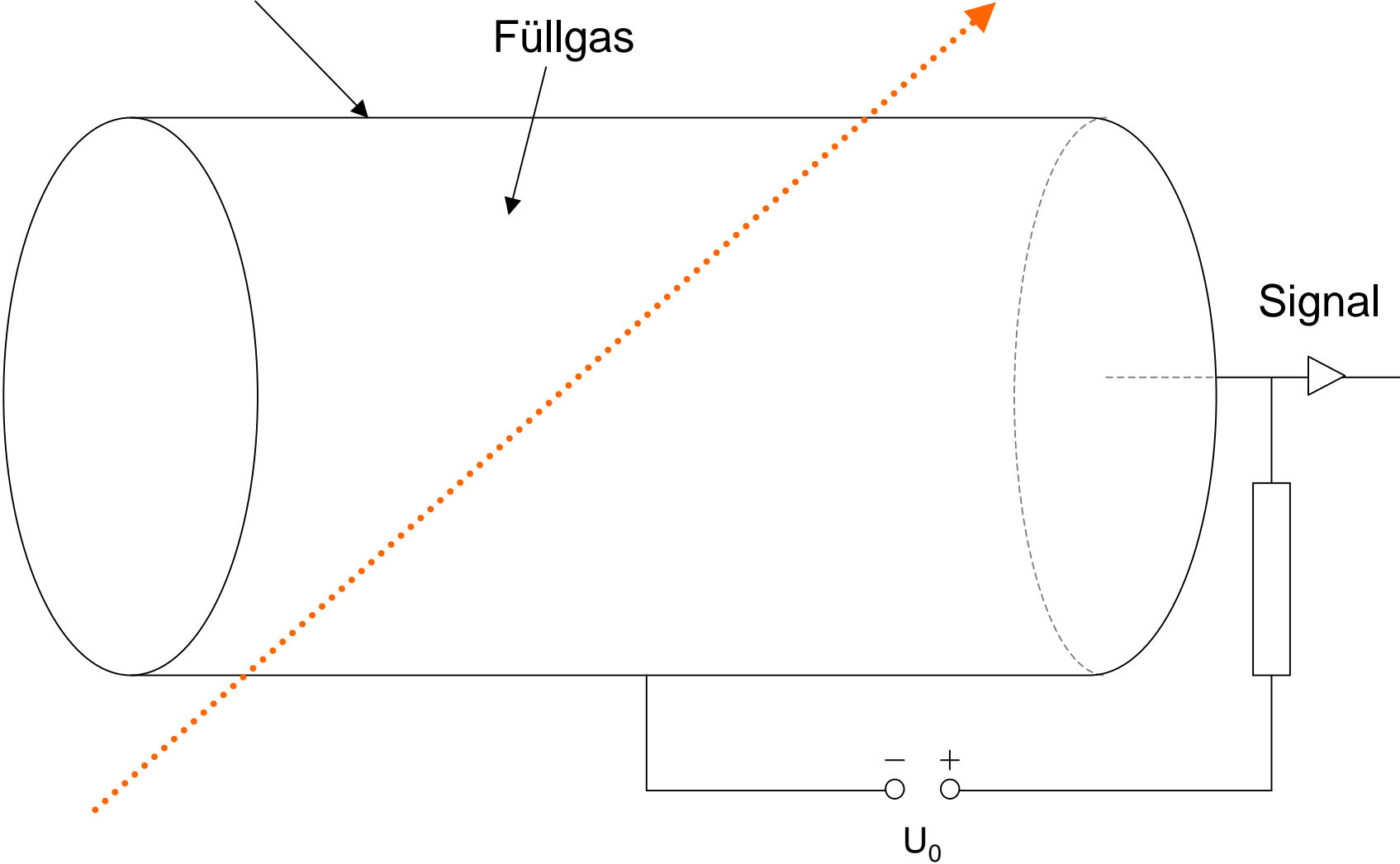
Geiger-Müller-Zählrohr



Außenelektrode

Füllgas

ionisierendes Teilchen



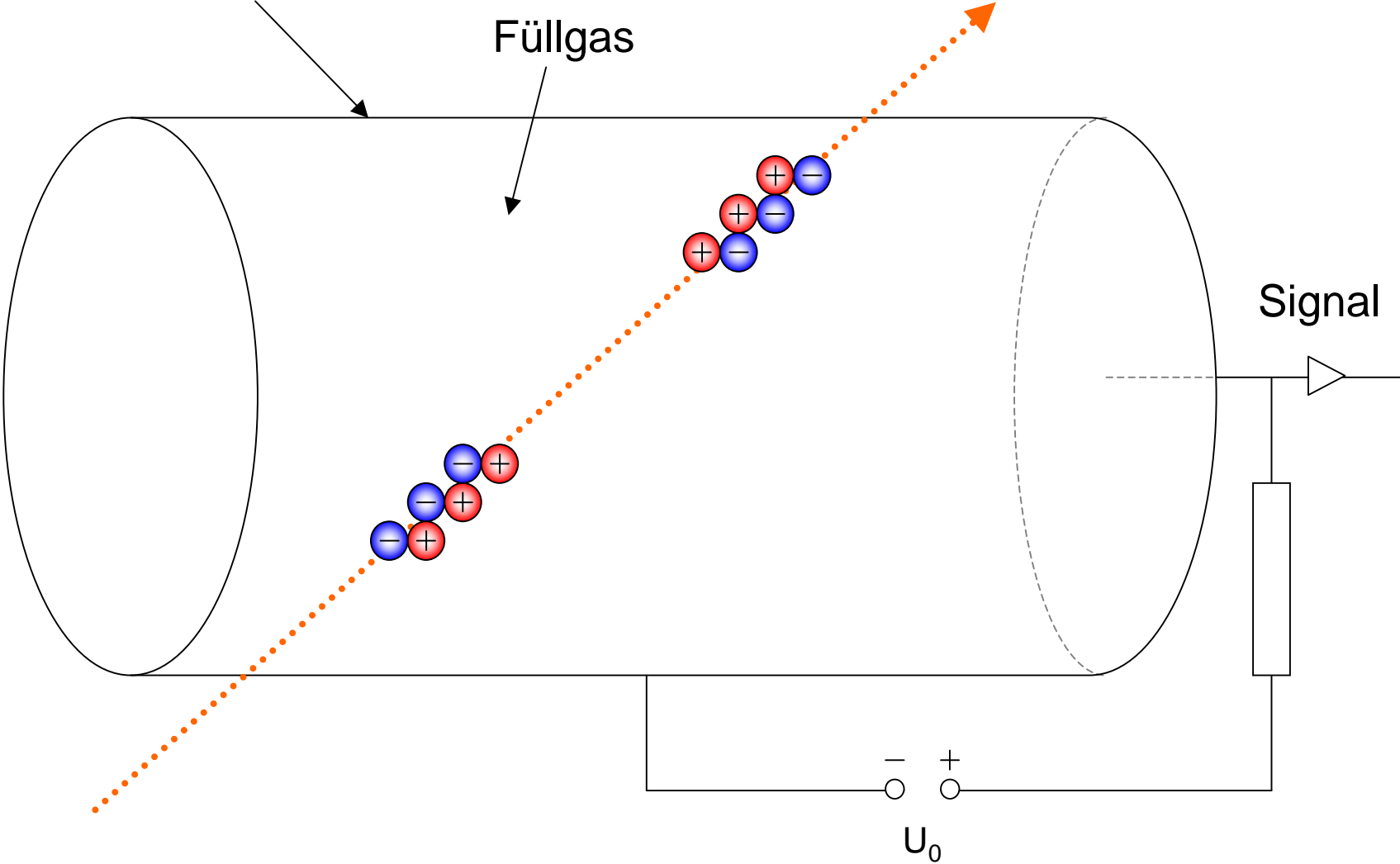
Geiger-Müller-Zählrohr



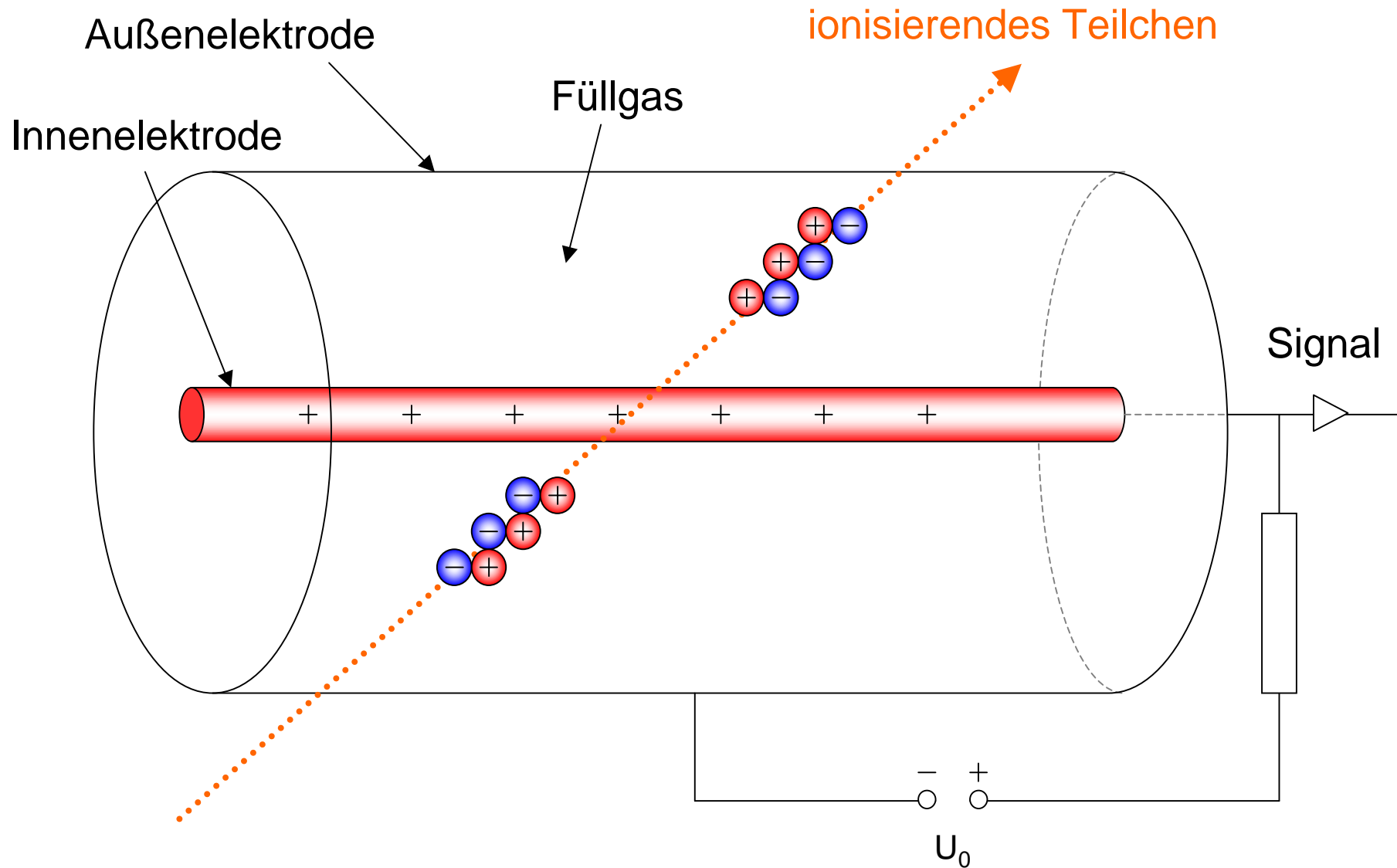
Außenelektrode

Füllgas

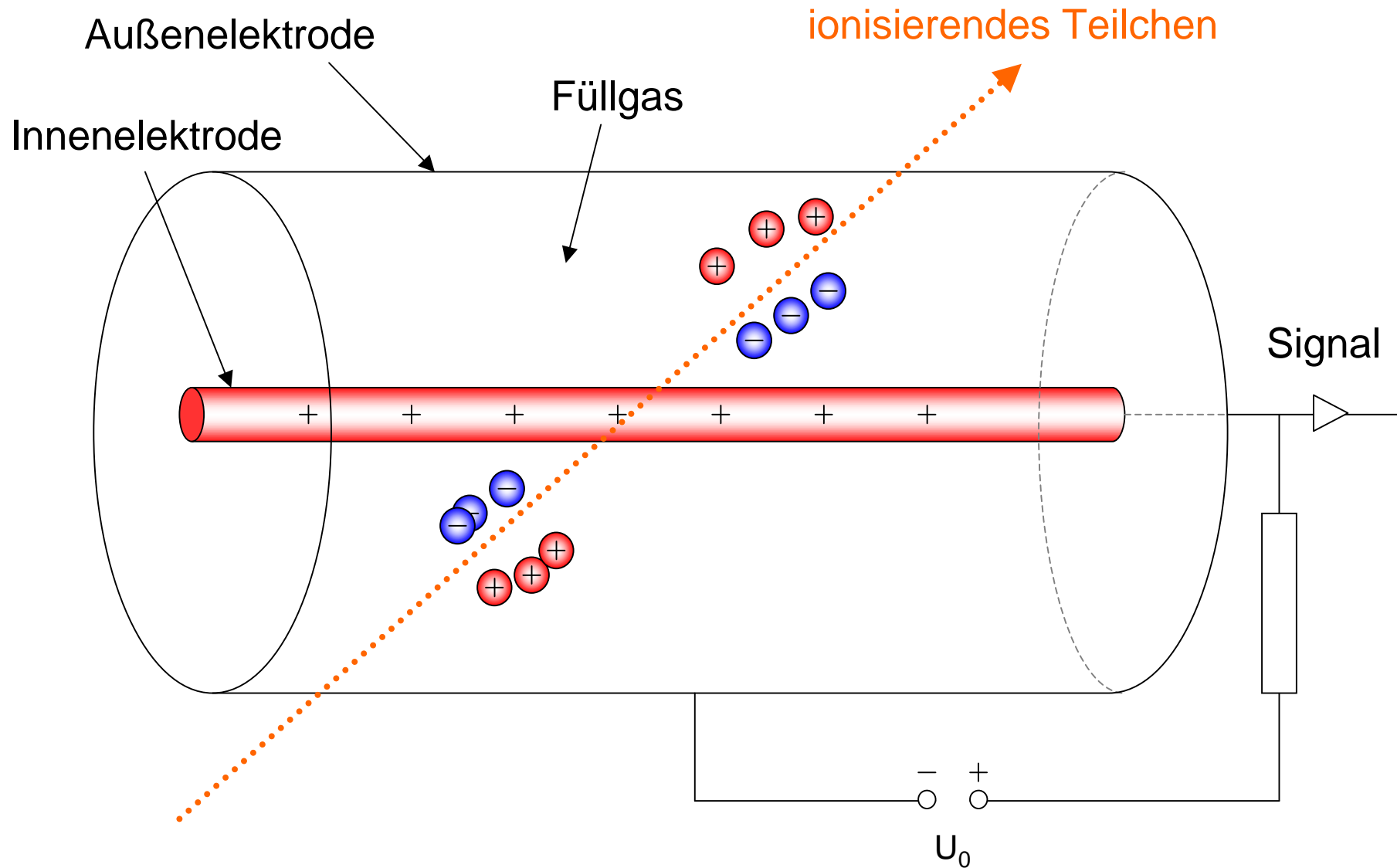
ionisierendes Teilchen



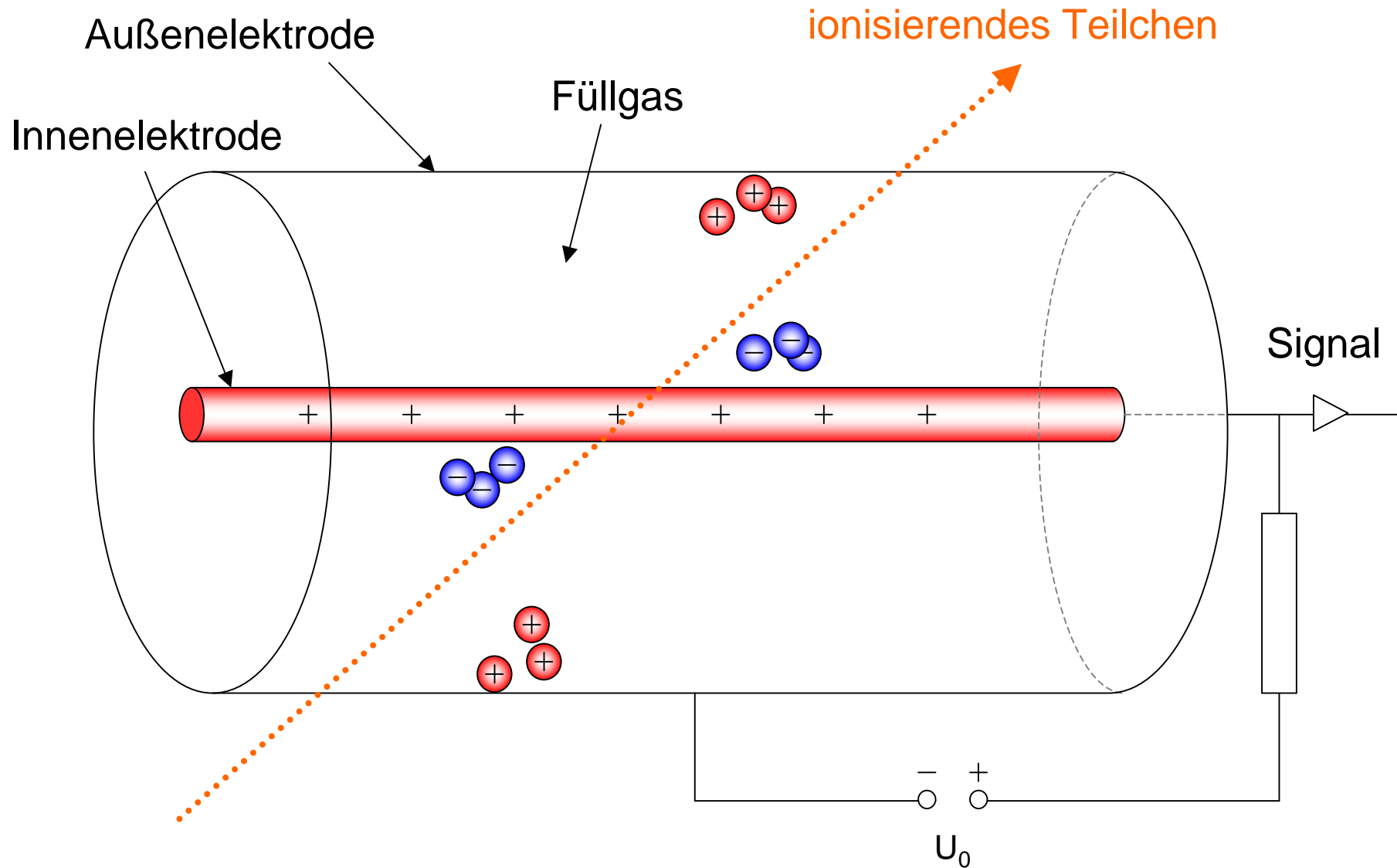
Geiger-Müller-Zählrohr



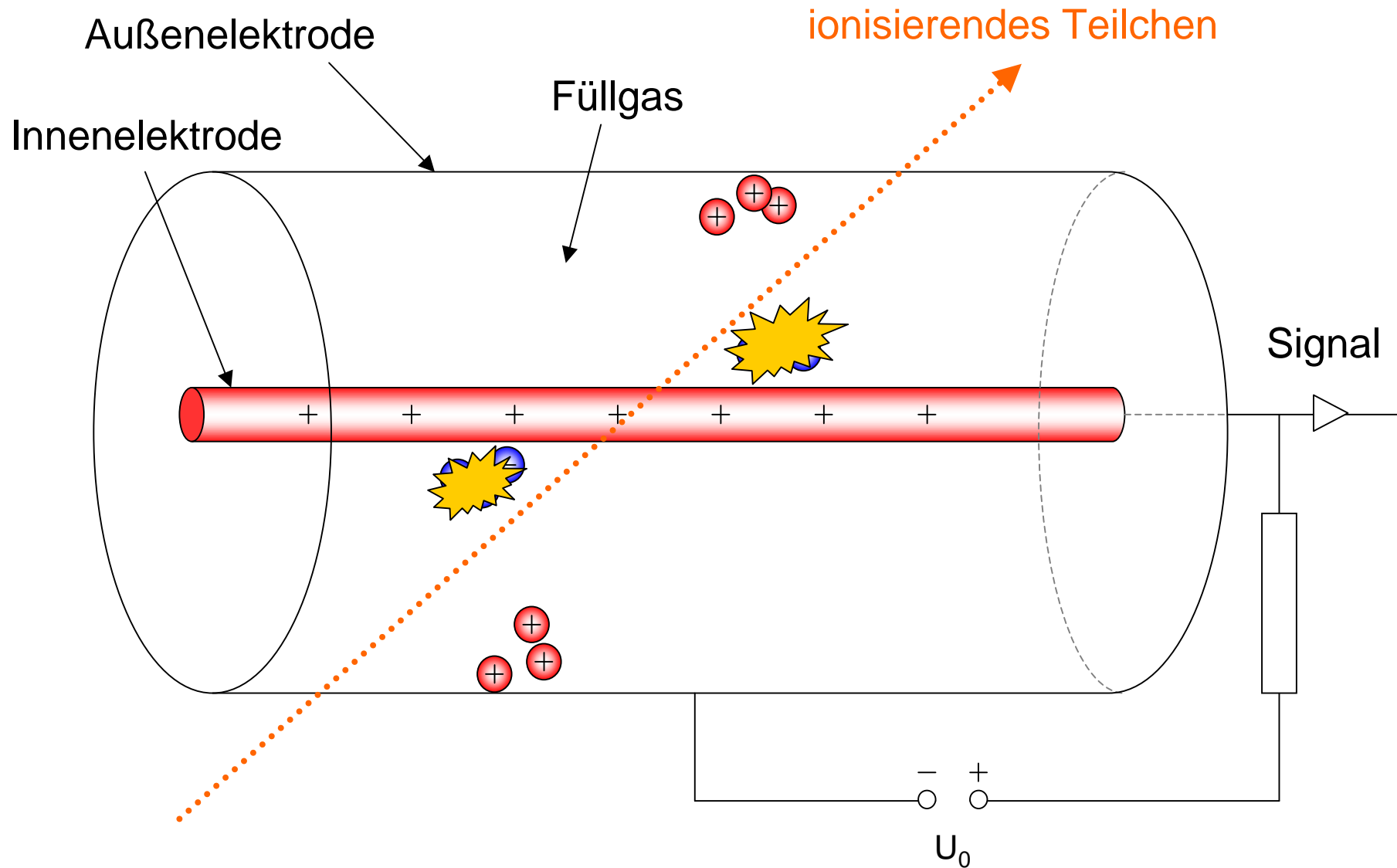
Geiger-Müller-Zählrohr



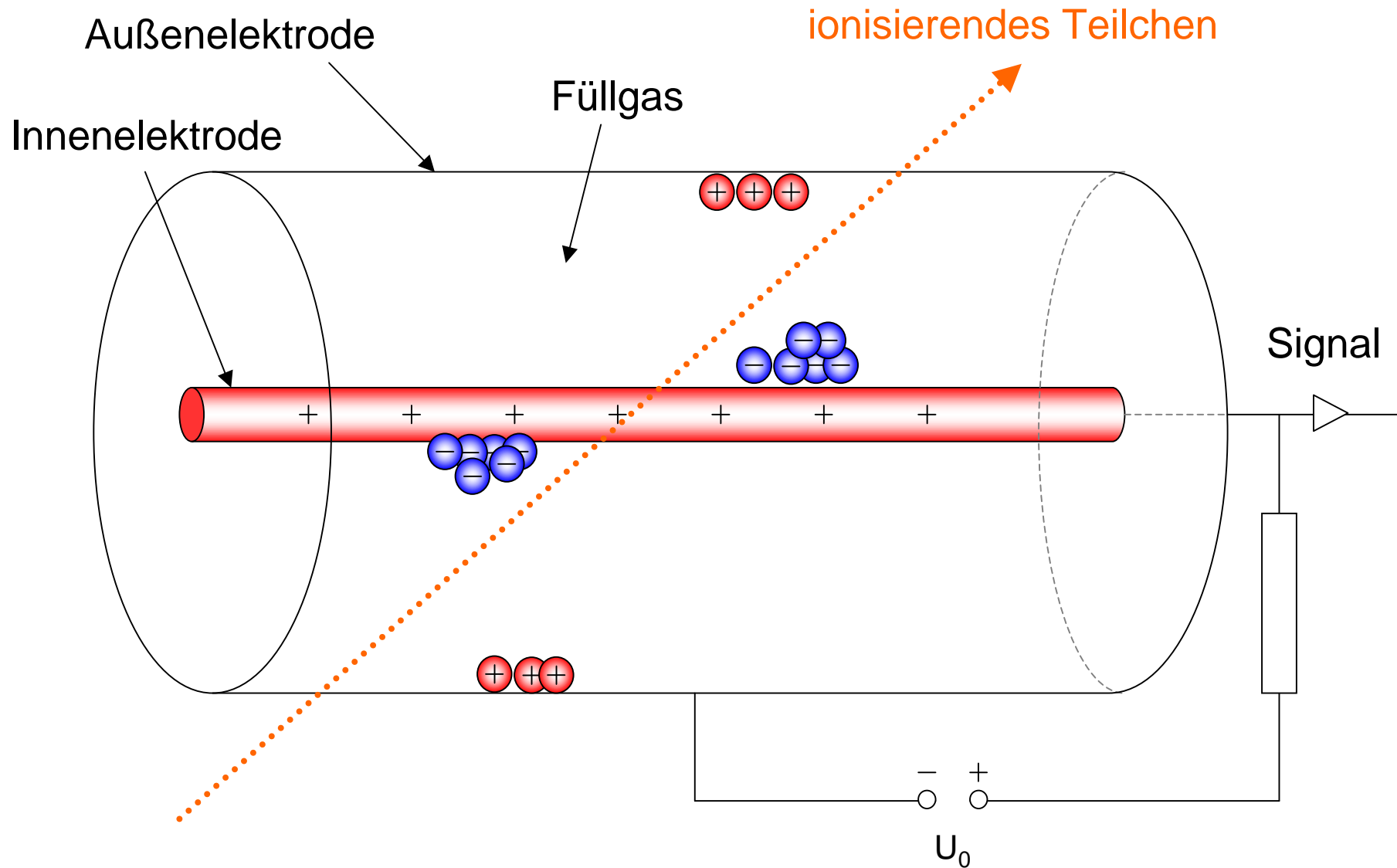
Geiger-Müller-Zählrohr



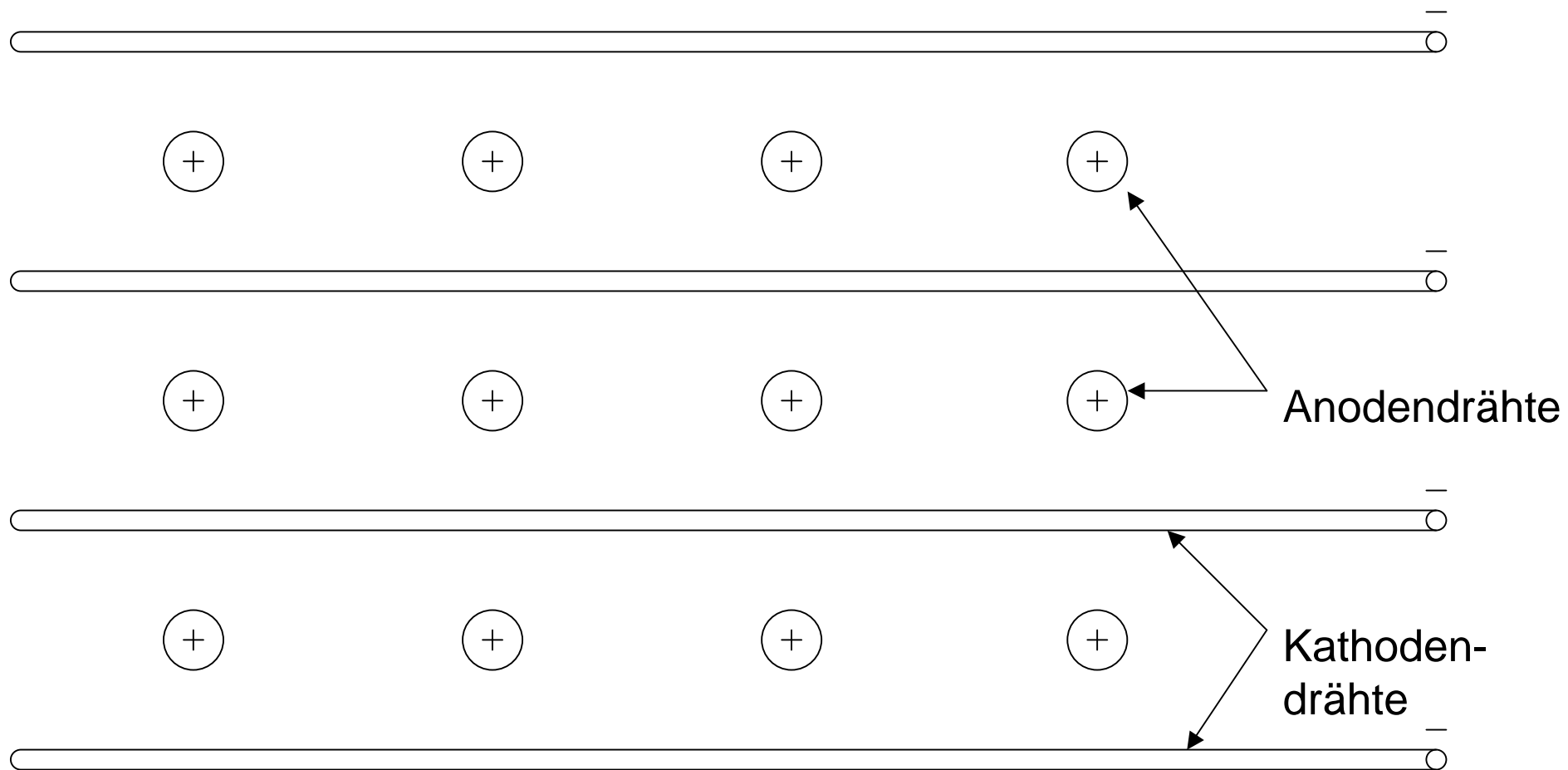
Geiger-Müller-Zählrohr



Geiger-Müller-Zählrohr



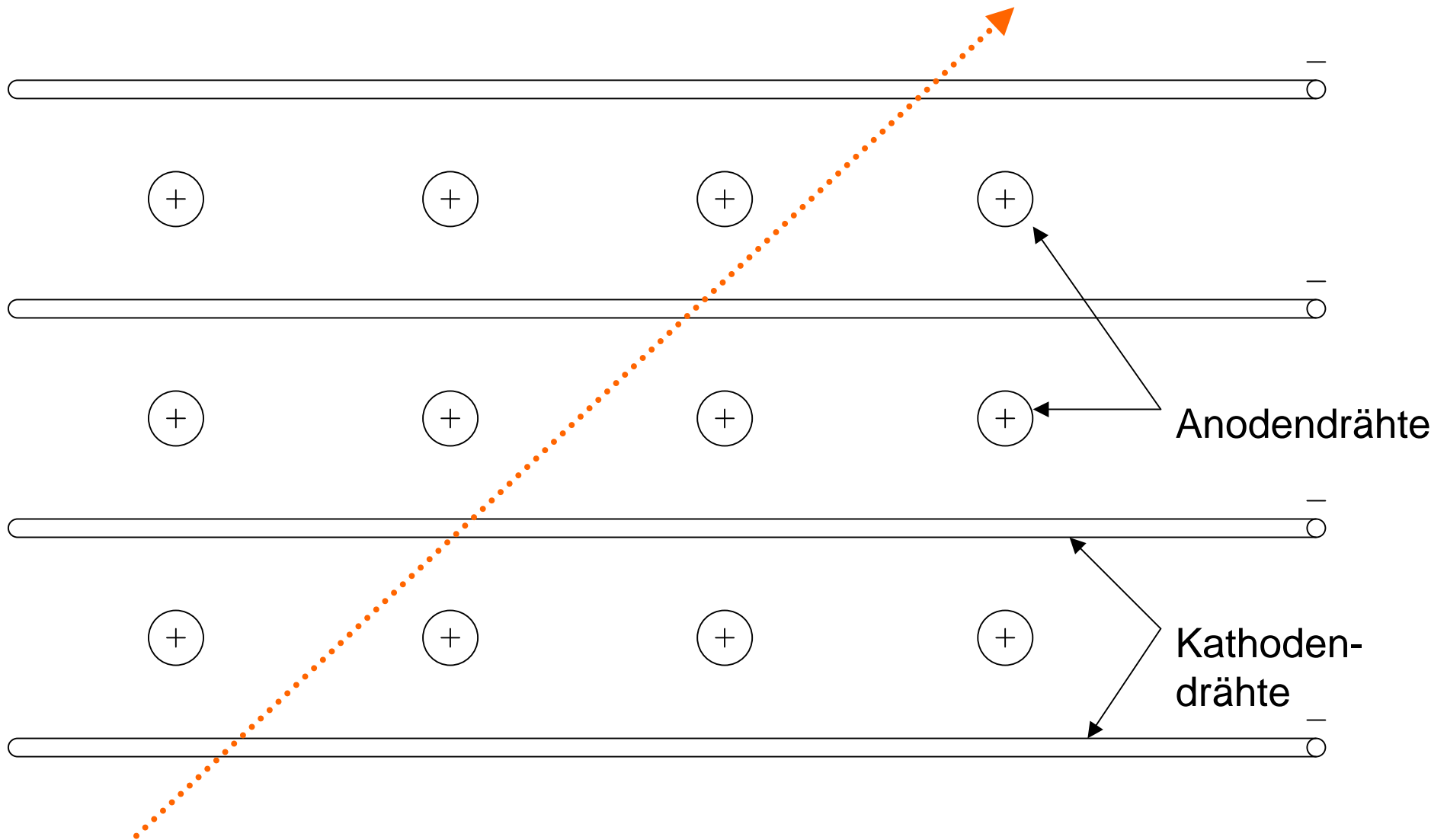
Vieldraht-Proporionalkammer



Vieldraht-Proporionalkammer



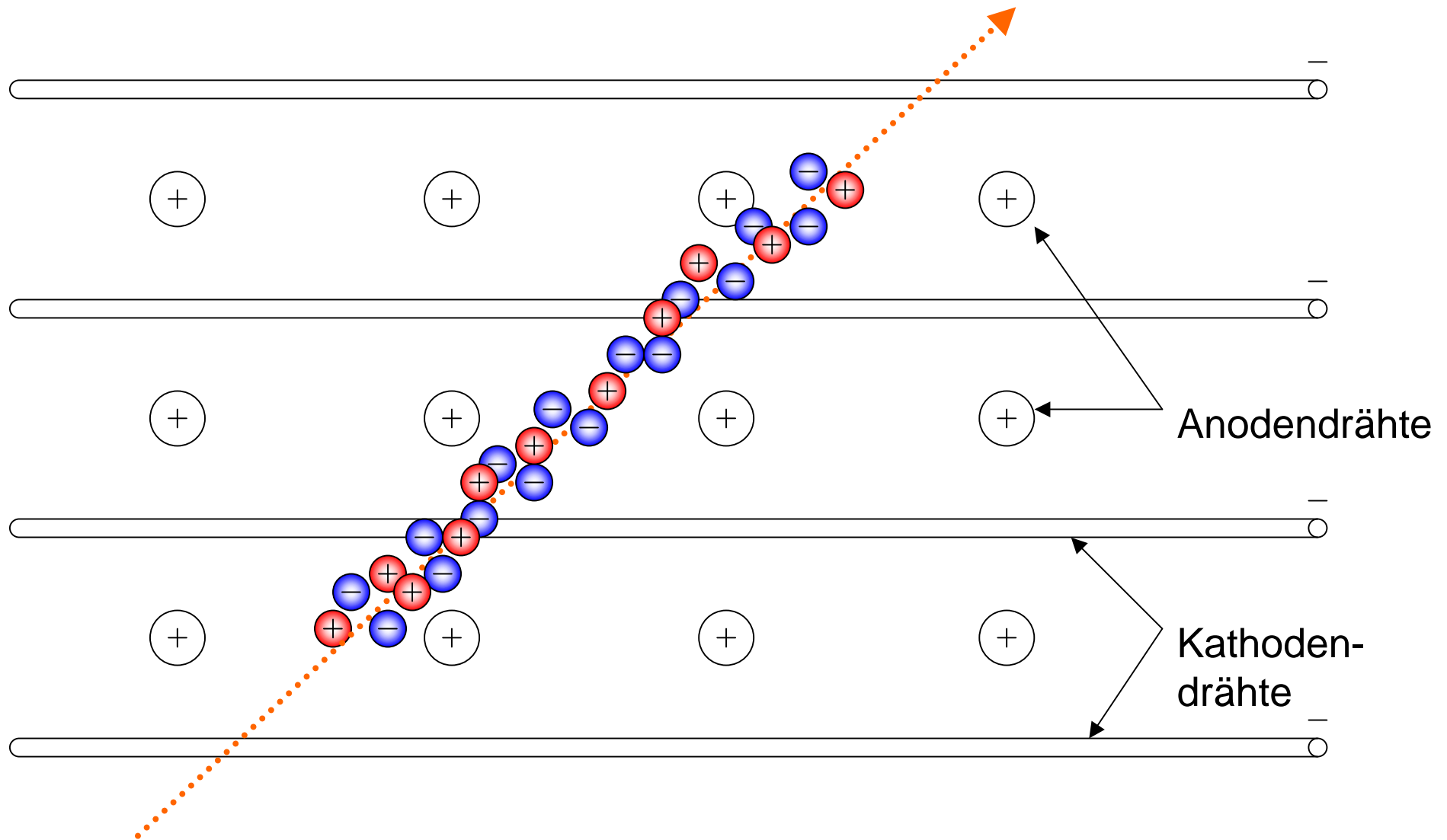
ionisierendes Teilchen



Vieldraht-Proporionalkammer



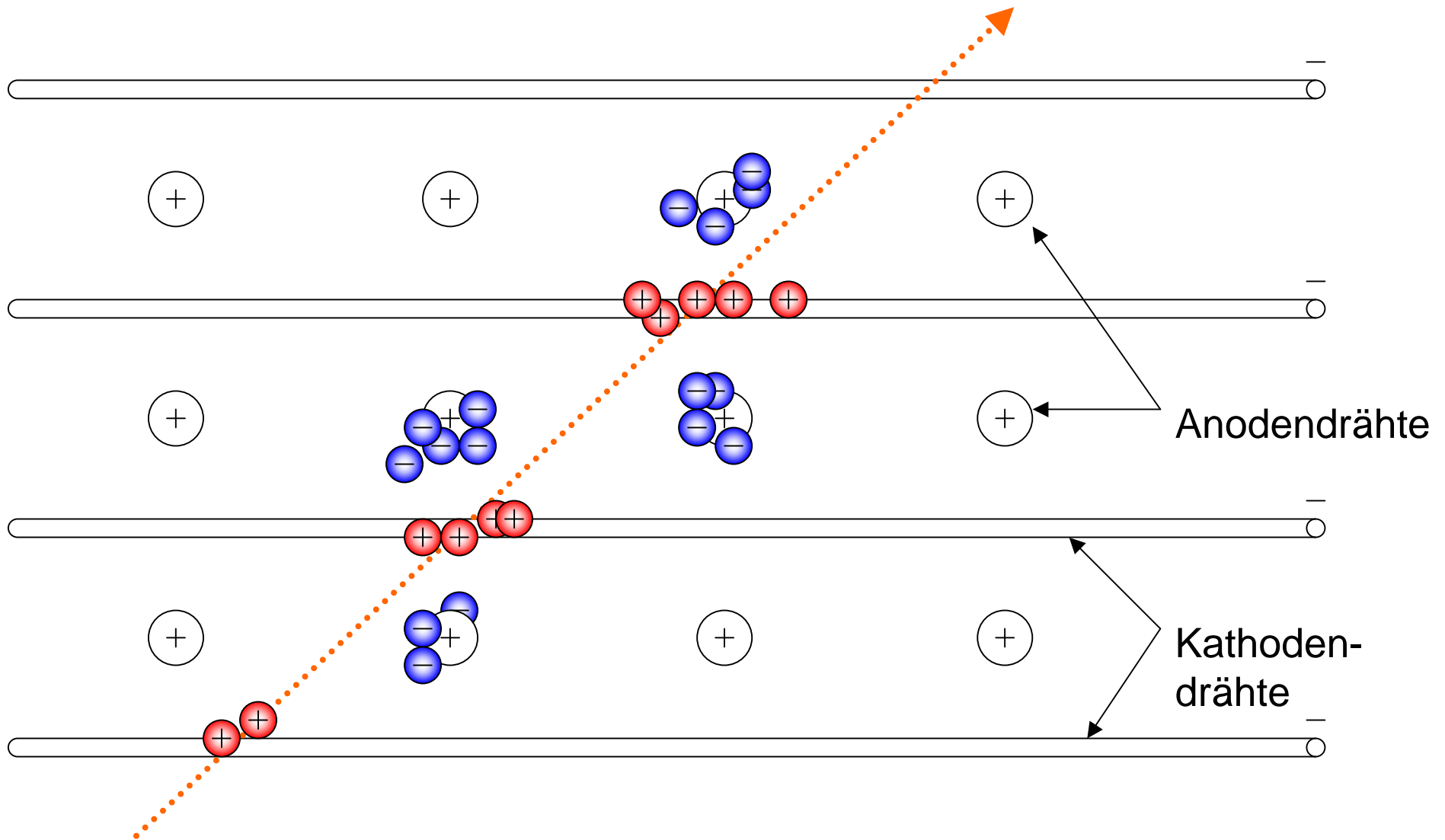
ionisierendes Teilchen



Vieldraht-Proportionalkammer



ionisierendes Teilchen



Vieldraht-Proporionalkammer



ionisierendes Teilchen

