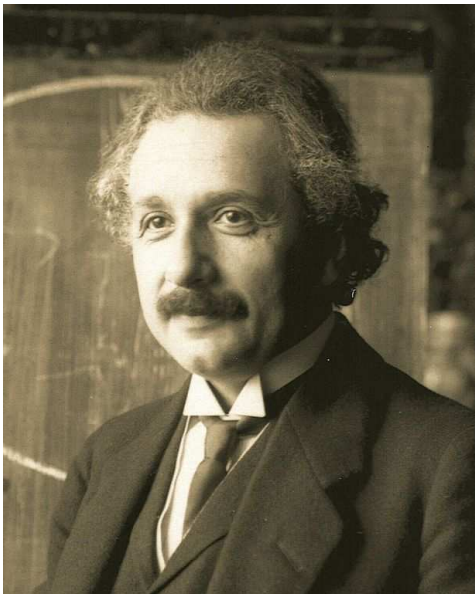
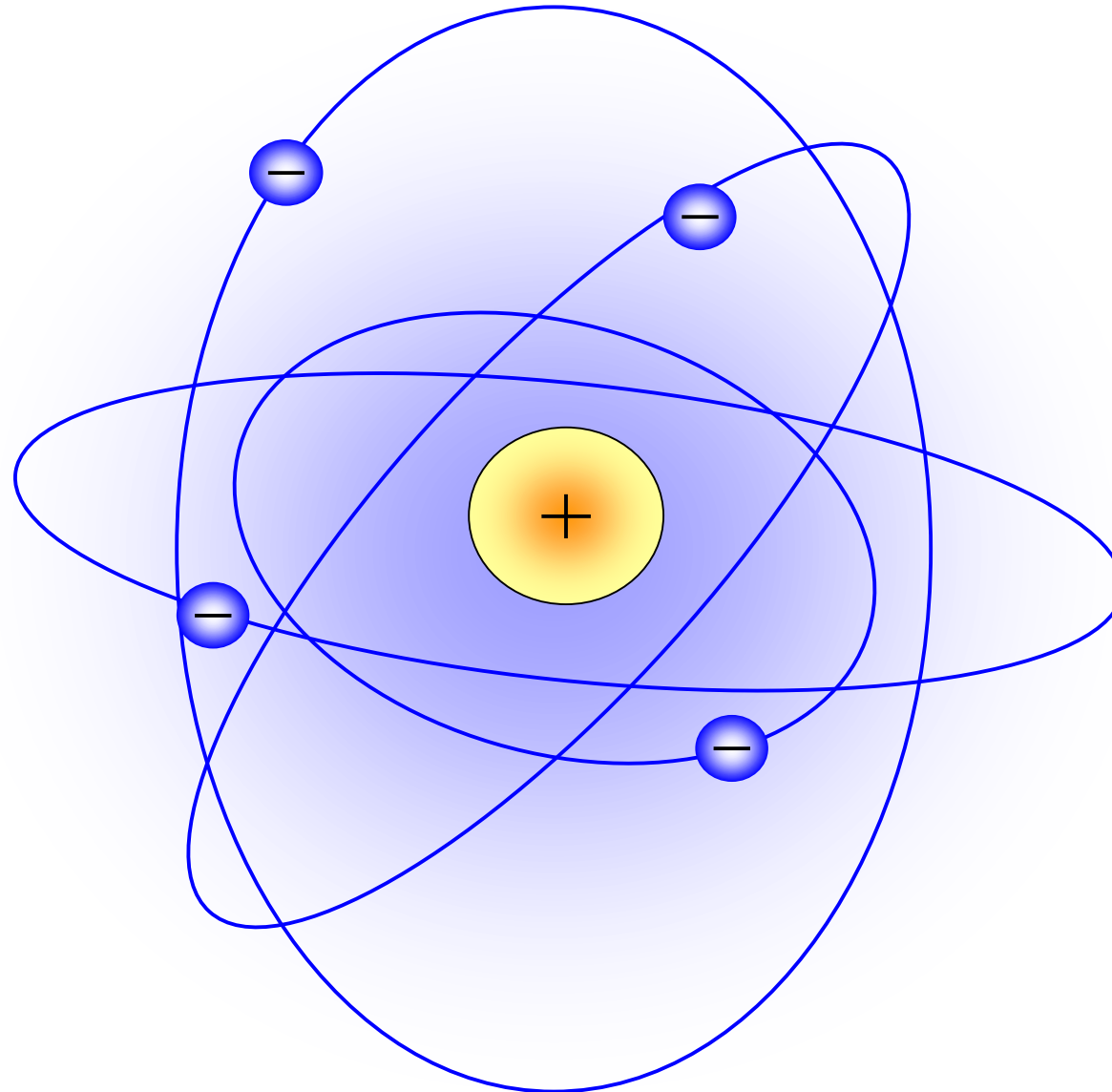


## Teil 2: Quantenmechanik

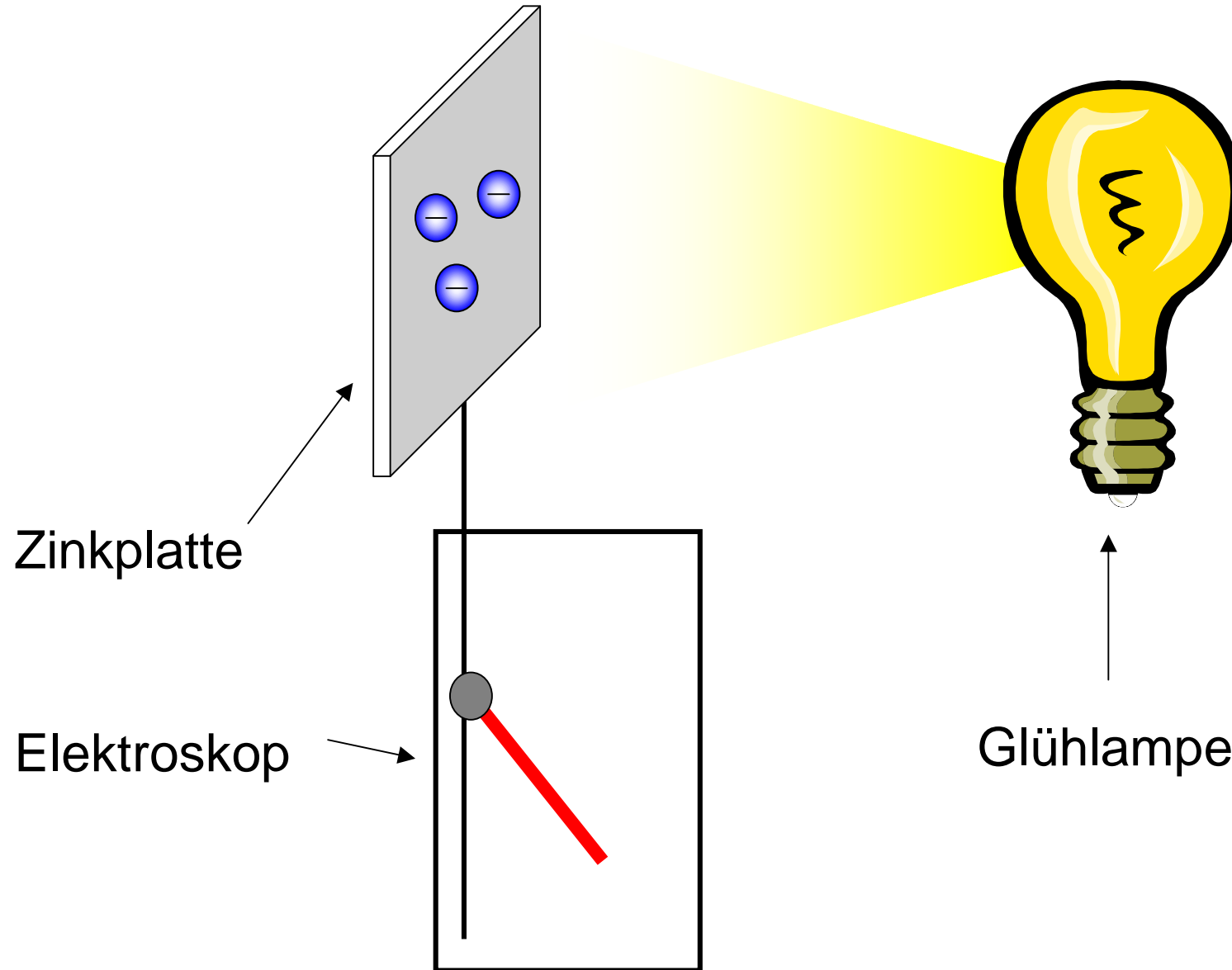


# Teilchenphysik im Experiment

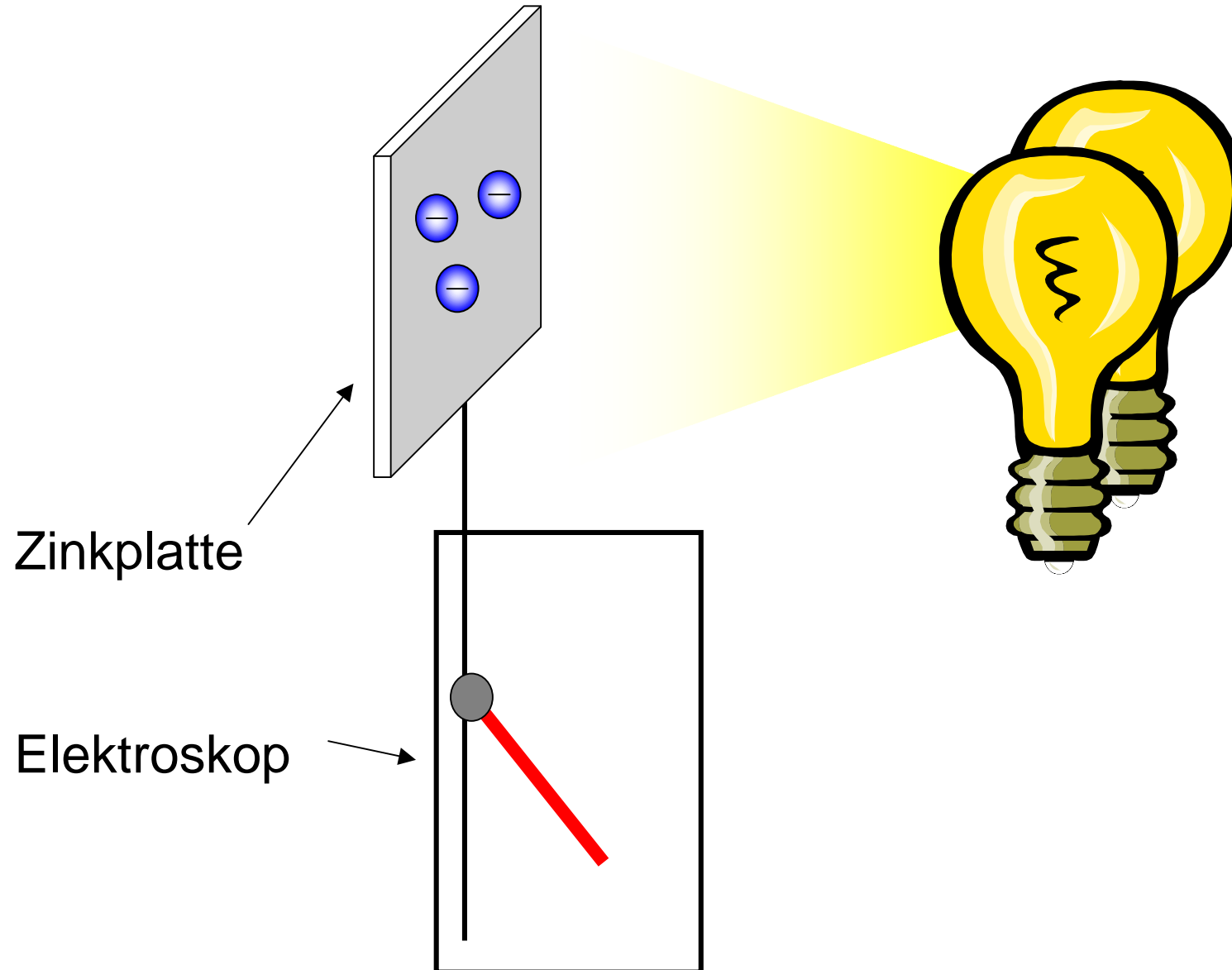
---



# Photoeffekt



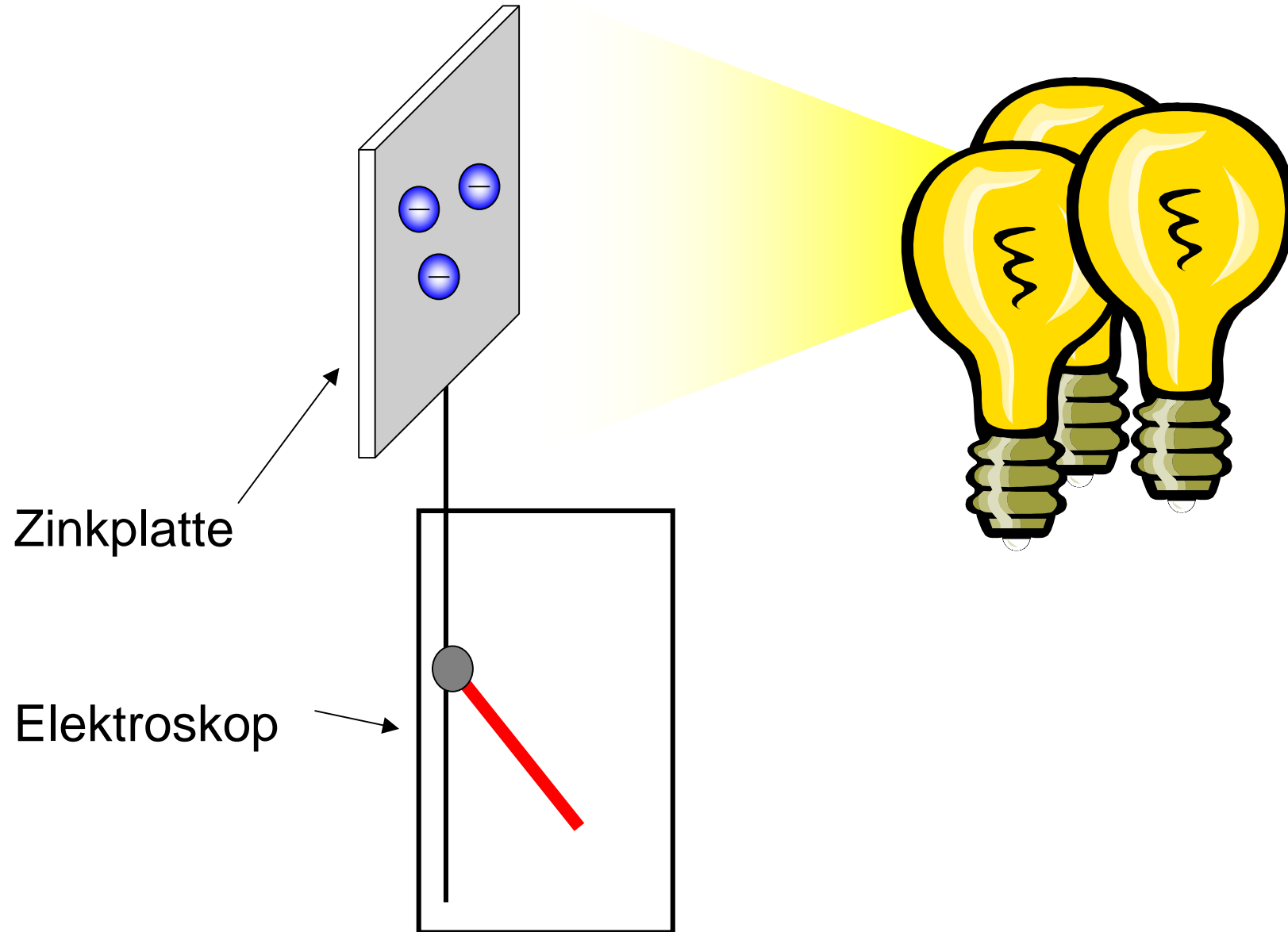
# Photoeffekt



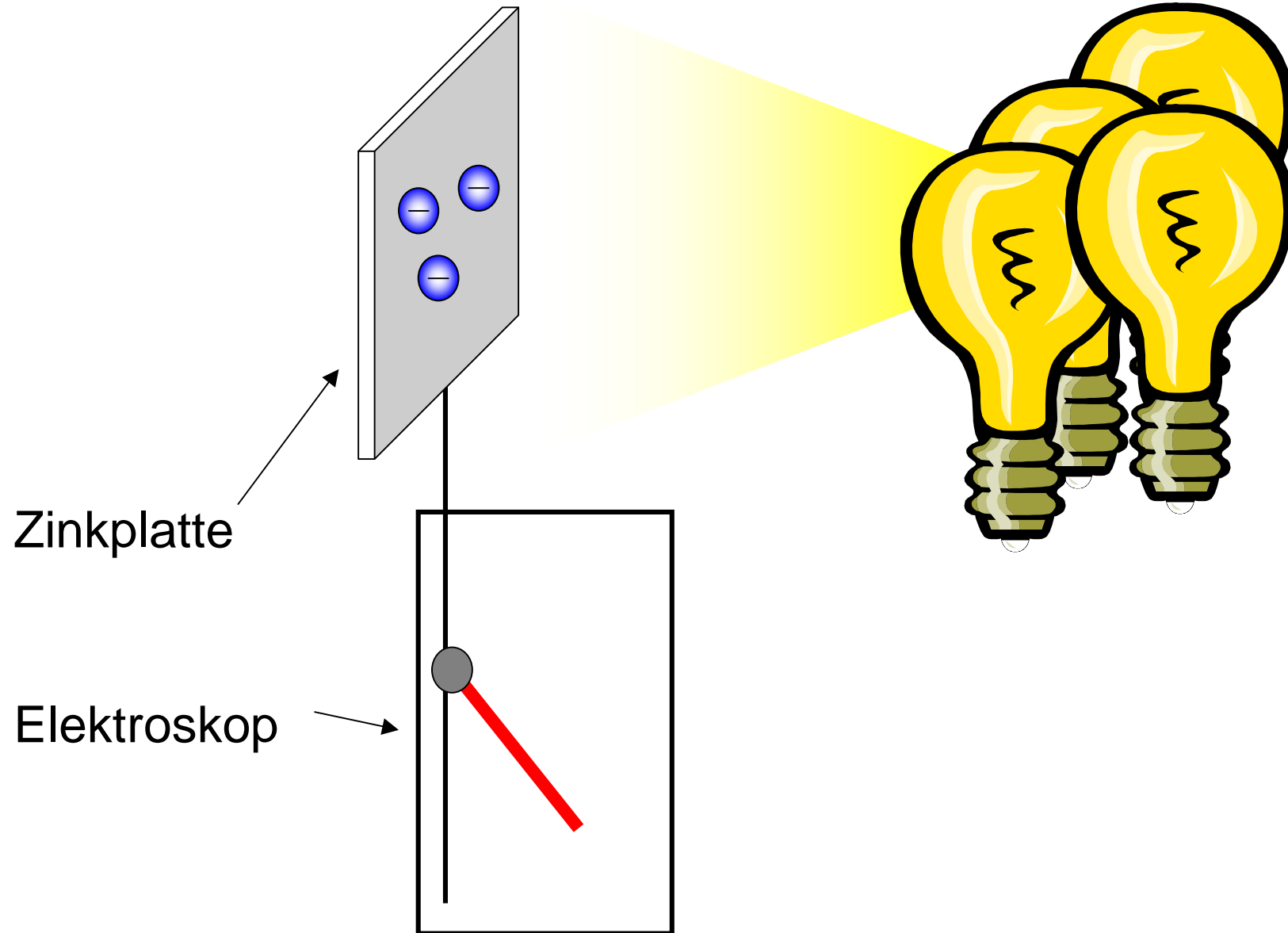
Zinkplatte

Elektroskop

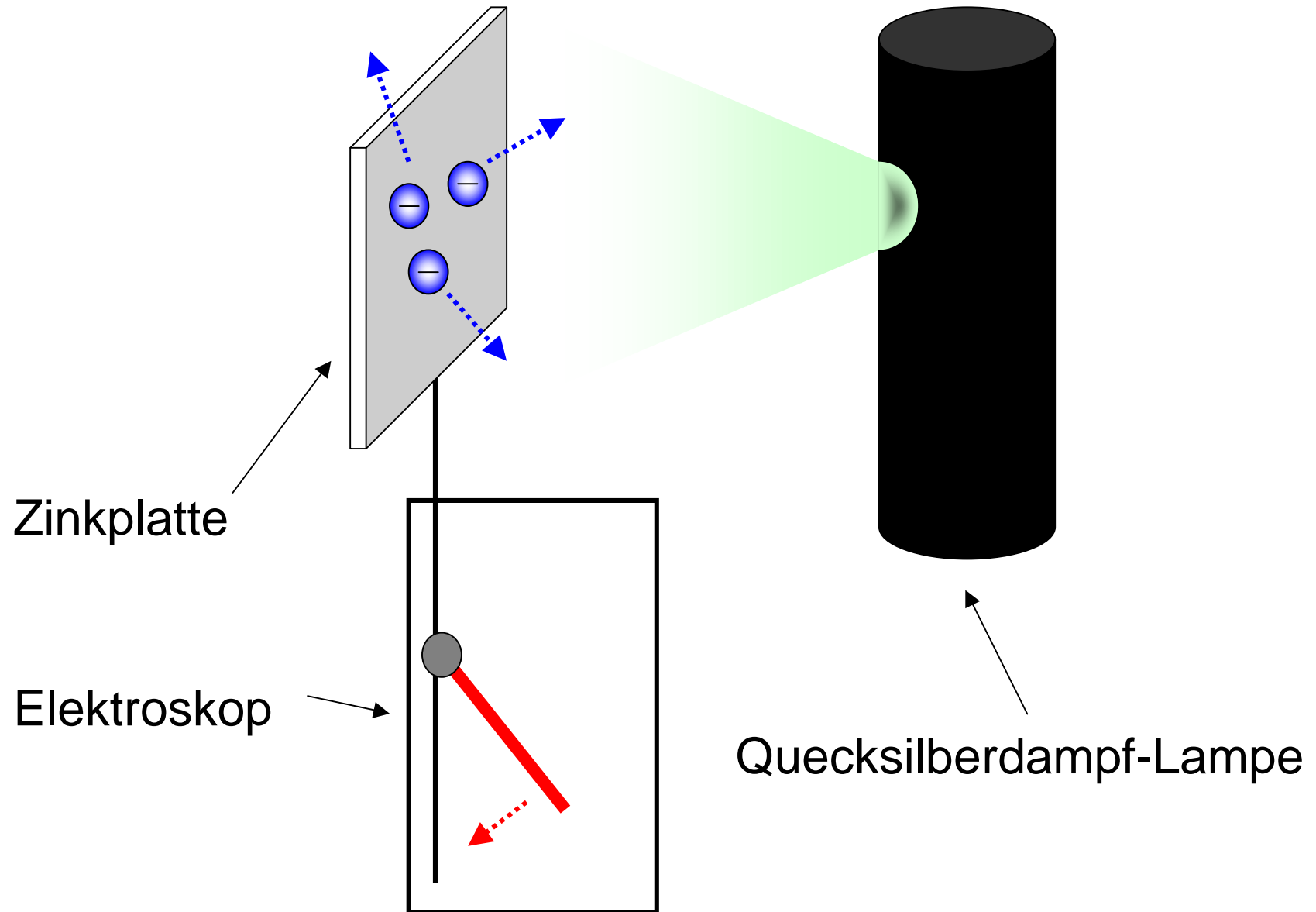
# Photoeffekt

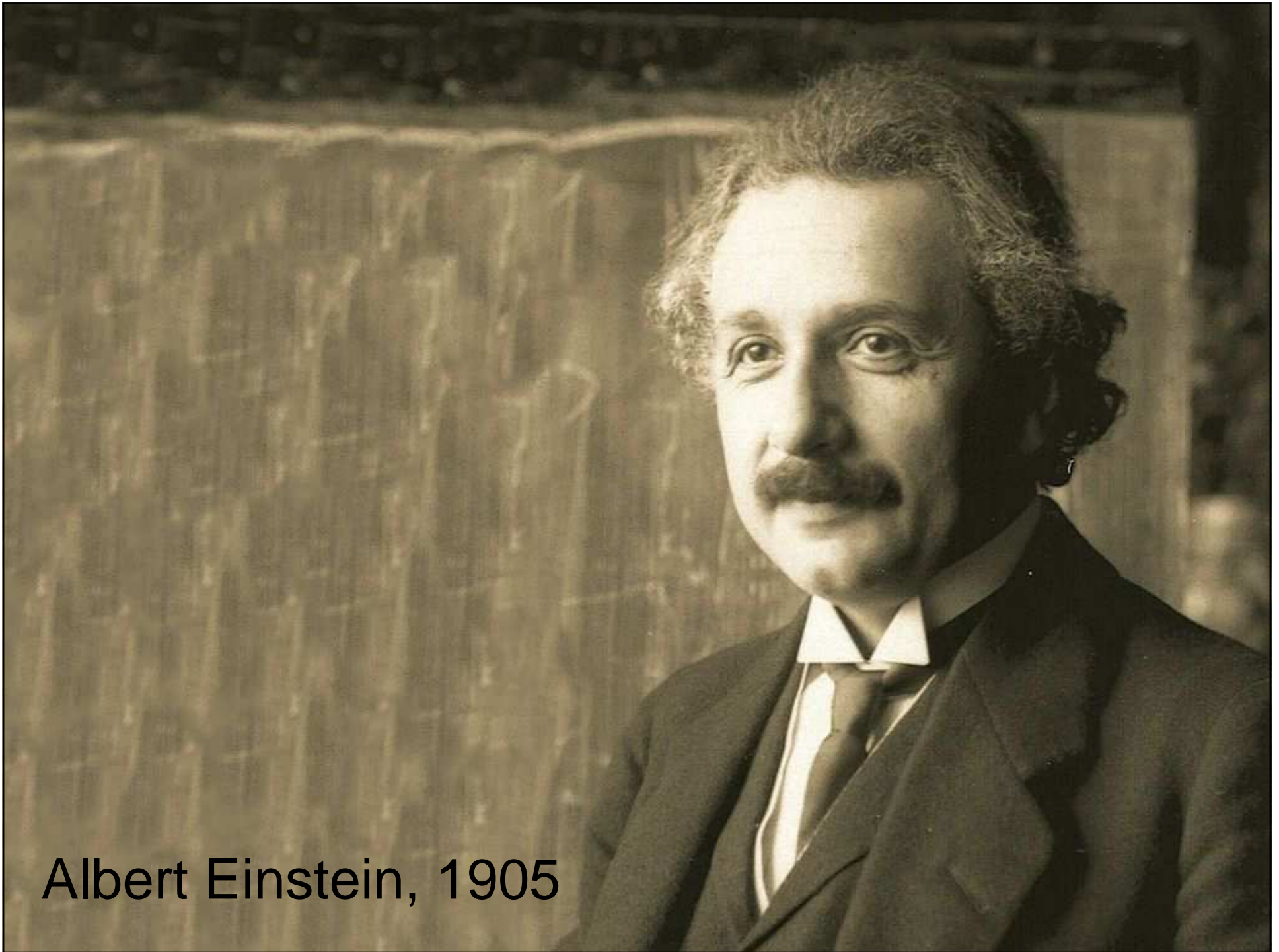


# Photoeffekt



# Photoeffekt





Albert Einstein, 1905



A black and white portrait of Albert Einstein, showing him from the chest up. He has his characteristic wild, wavy hair and a mustache. He is wearing a dark suit jacket over a white shirt and a dark tie. The background is a textured, slightly mottled grey. A large, bright yellow thought bubble is positioned in the upper left quadrant of the image, containing the German text 'Licht hat Teilcheneigenschaften!'. The bubble has a black outline and a tail that points towards Einstein's head. There are three smaller, similar yellow bubbles trailing off from the main one towards the right.

Licht hat Teilchen-  
eigenschaften!

Albert Einstein, 1905

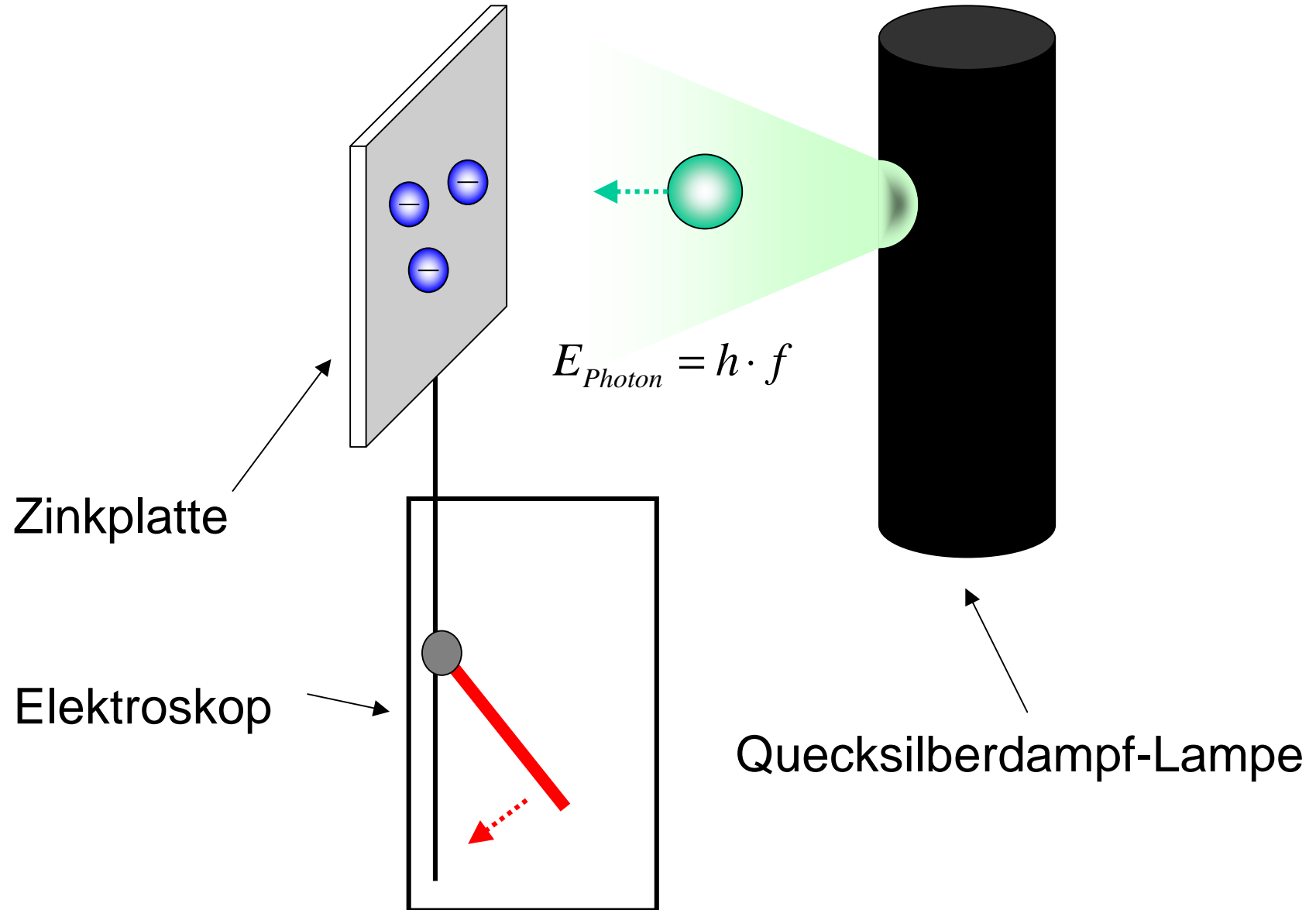


Licht hat Teilchen-  
eigenschaften!

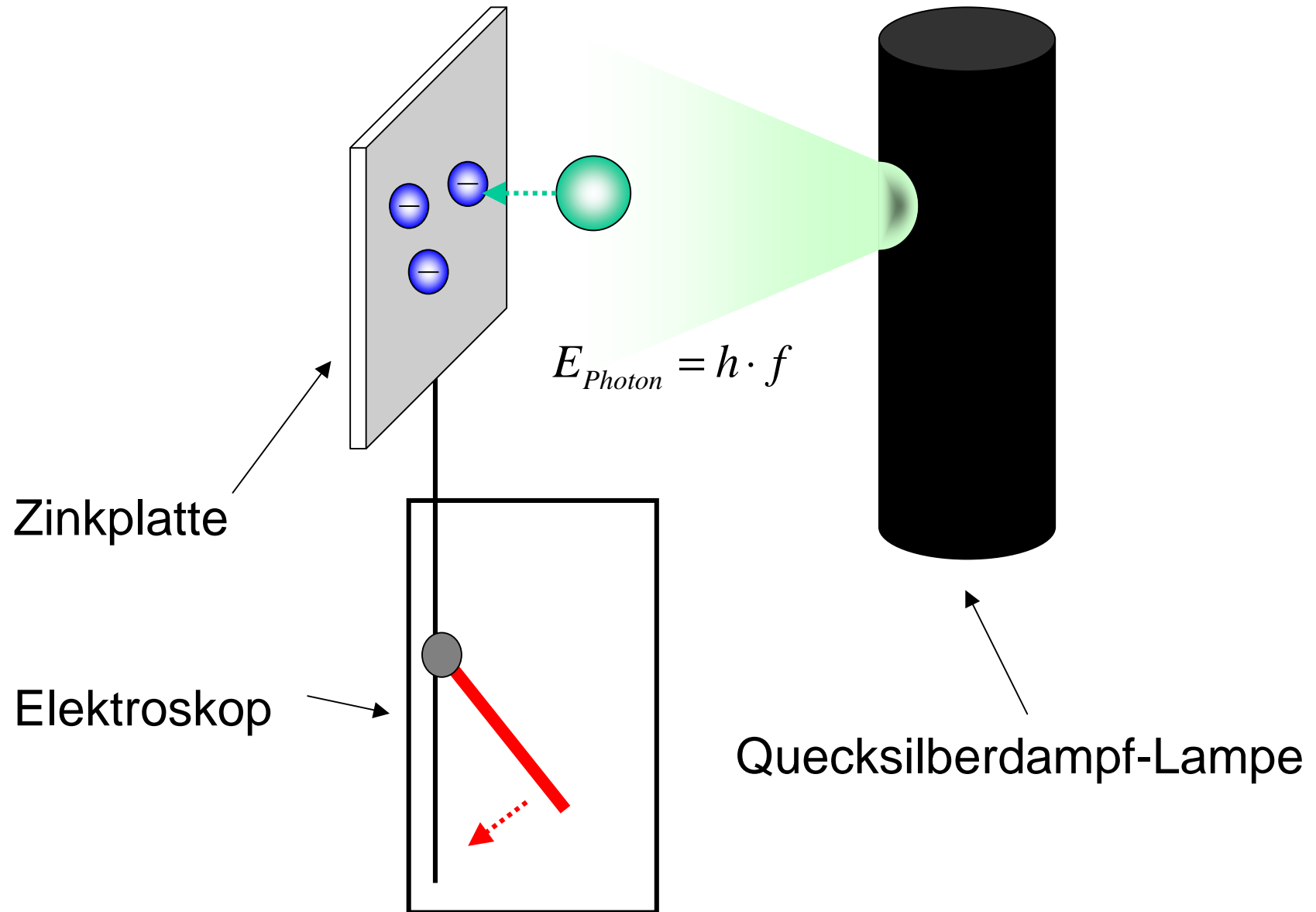
$$E_{\text{Photon}} = h \cdot f$$

Albert Einstein, 1905

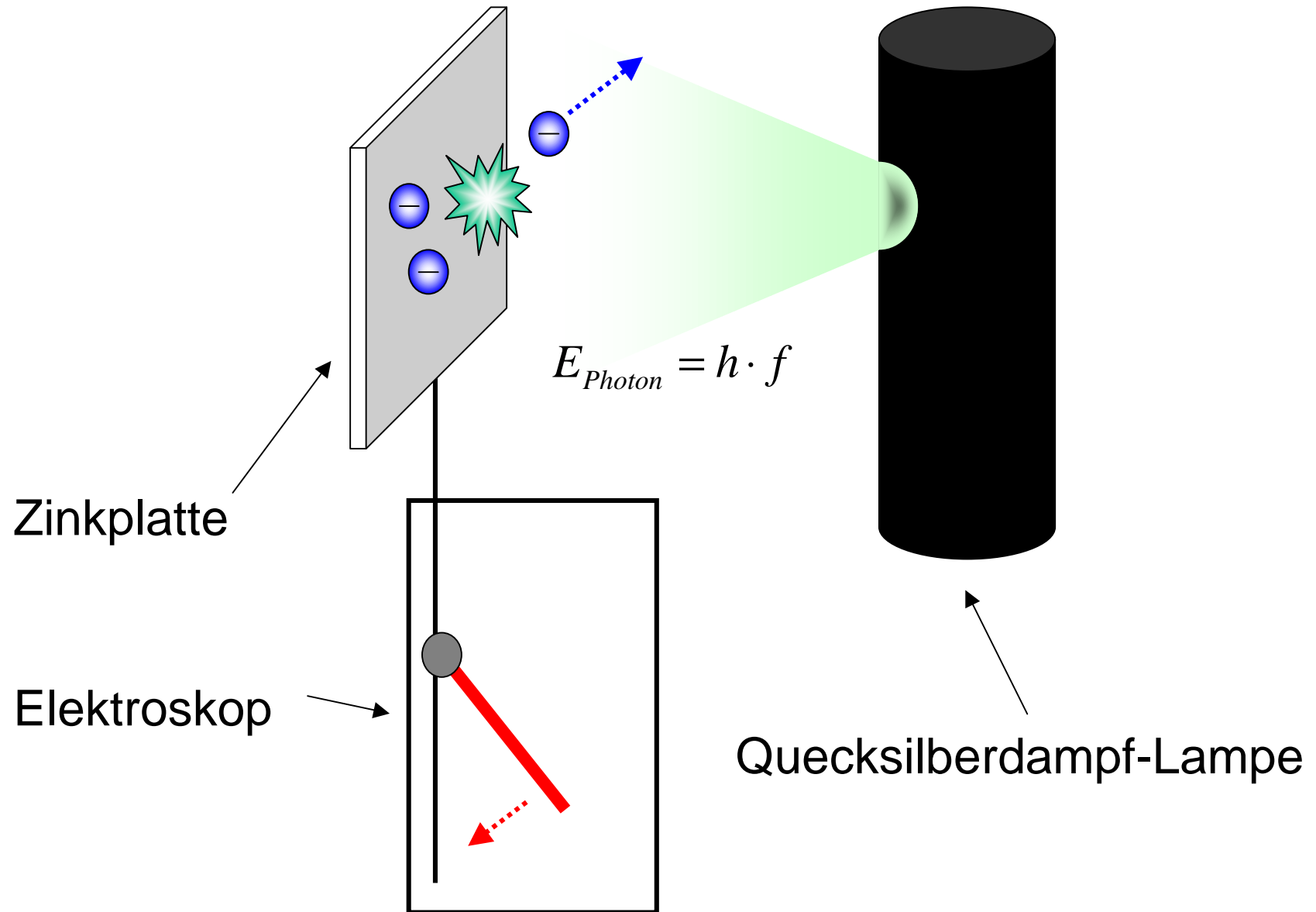
# Photoeffekt



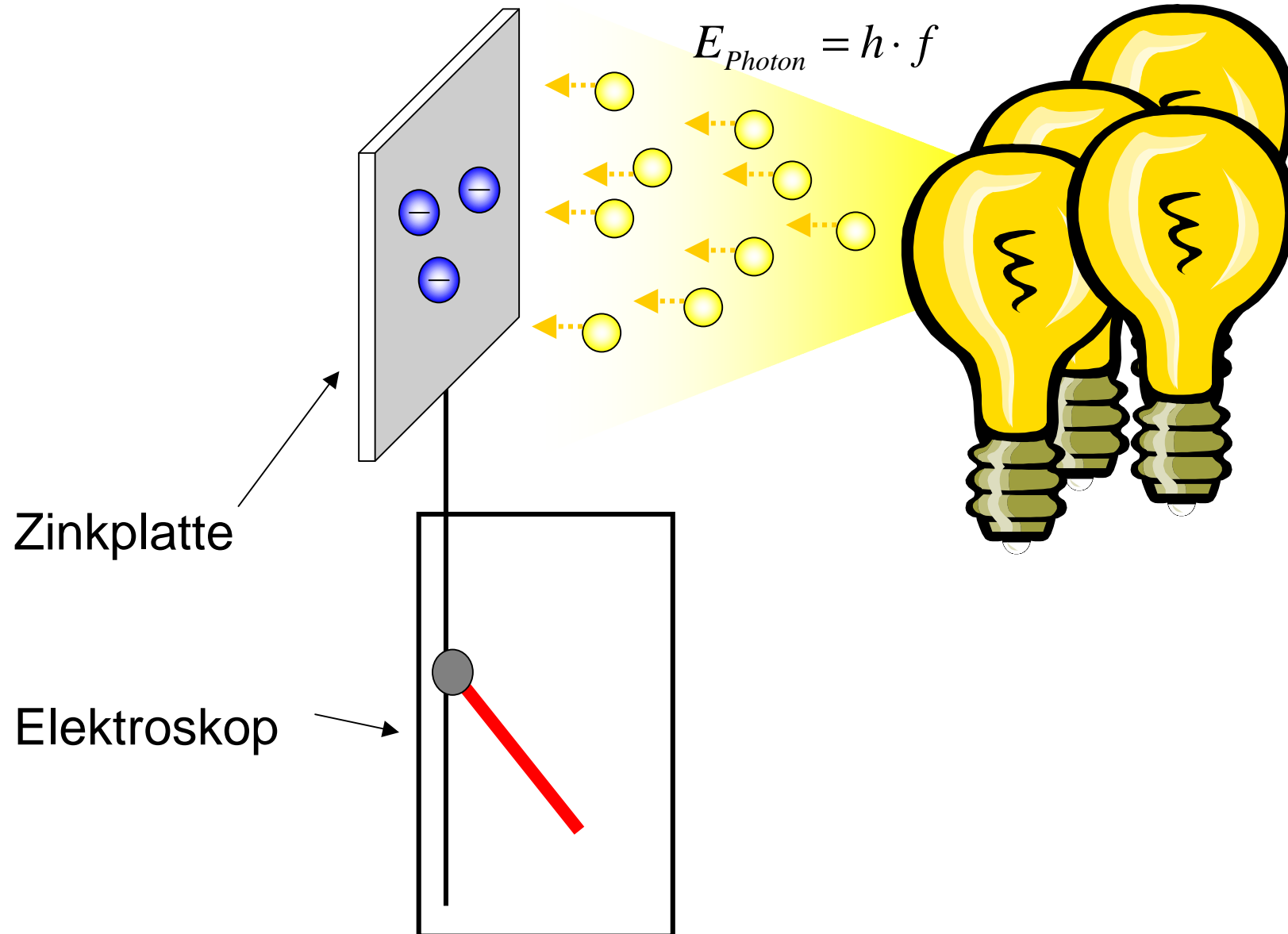
# Photoeffekt



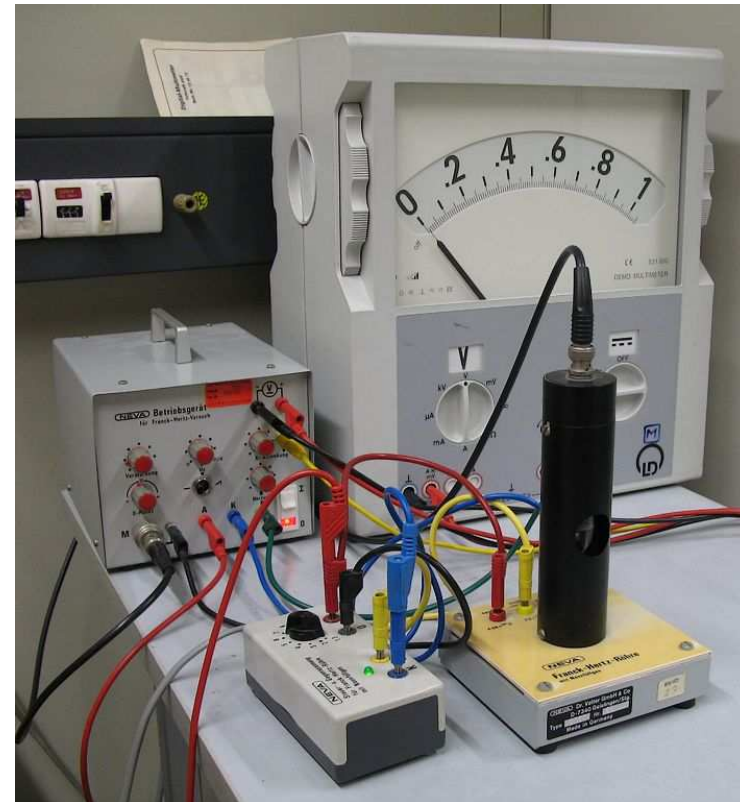
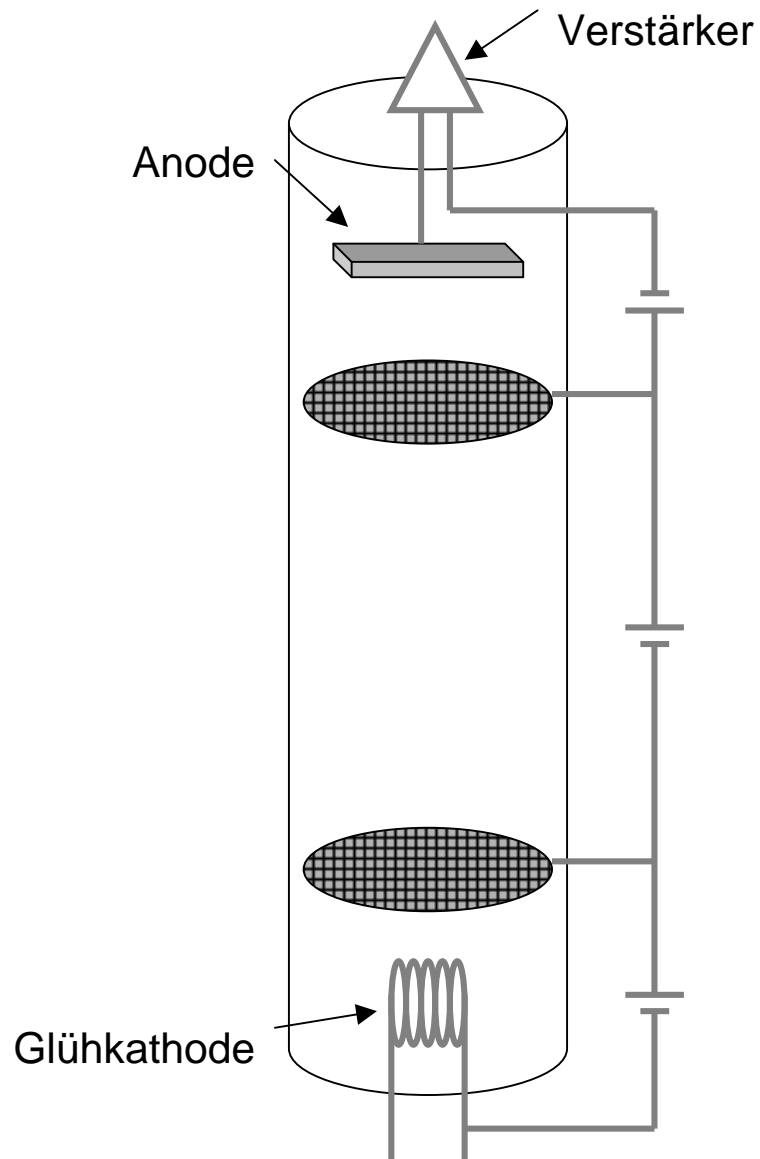
# Photoeffekt



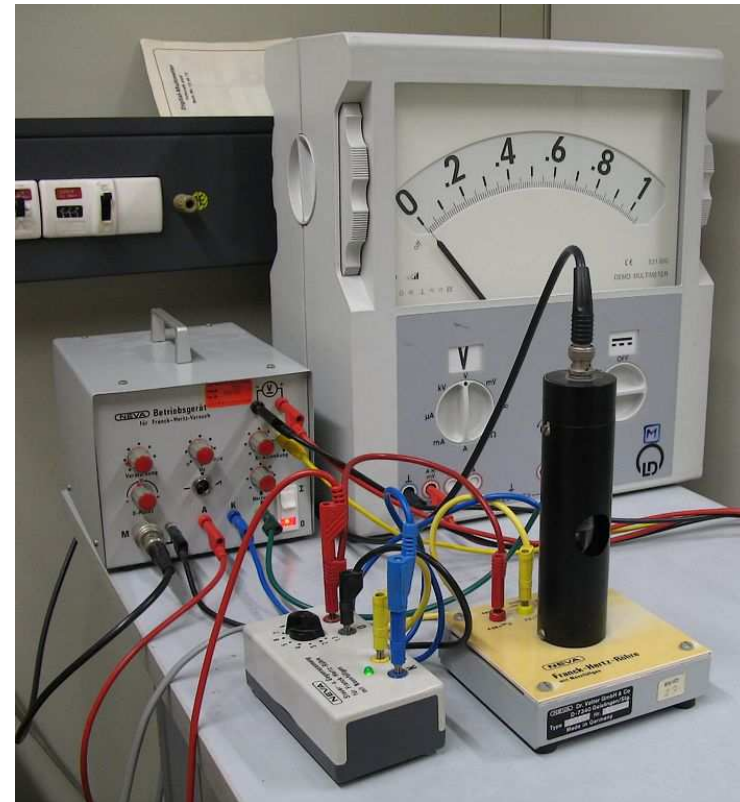
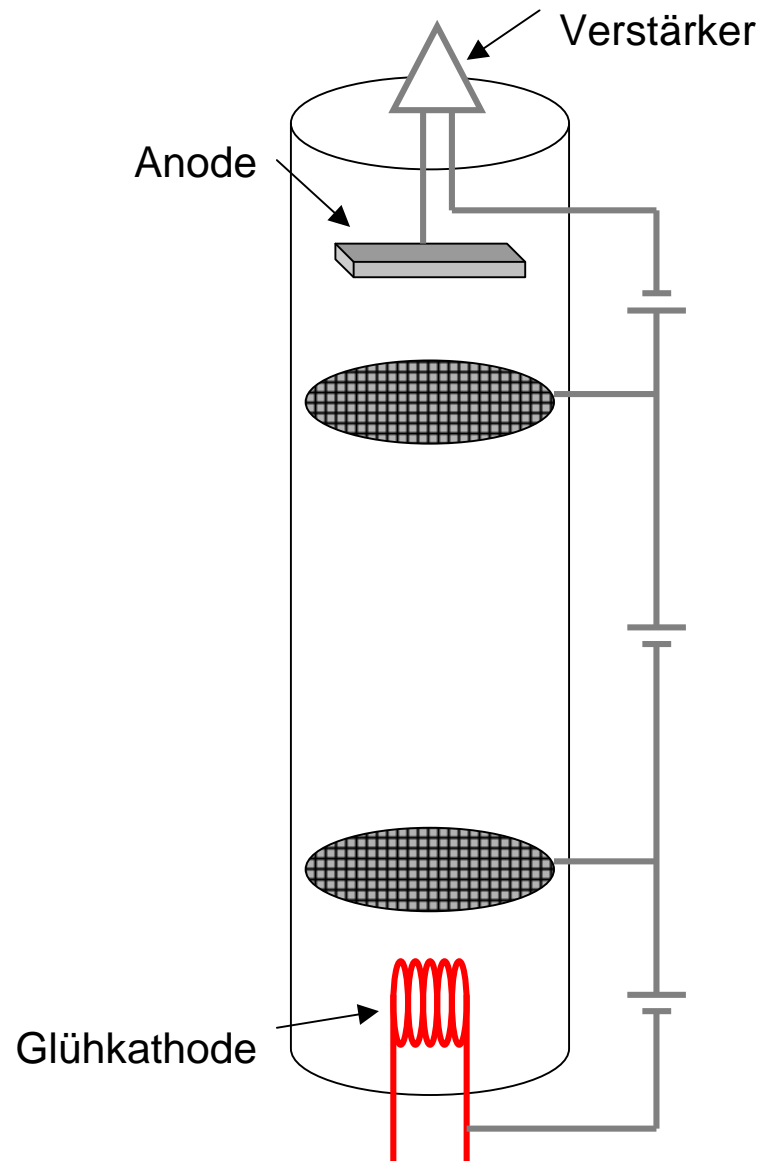
# Photoeffekt



# Franck-Hertz-Versuch

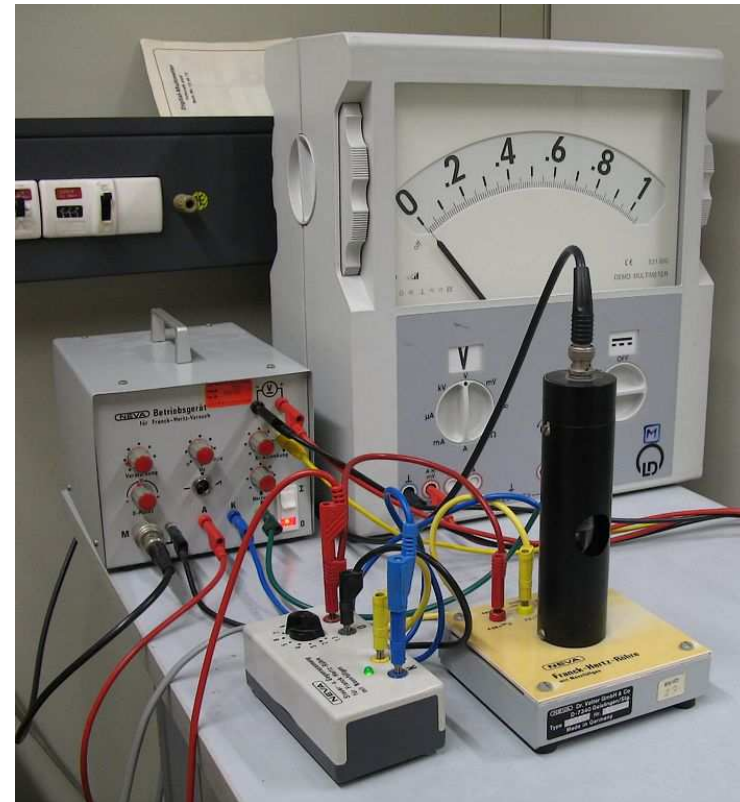
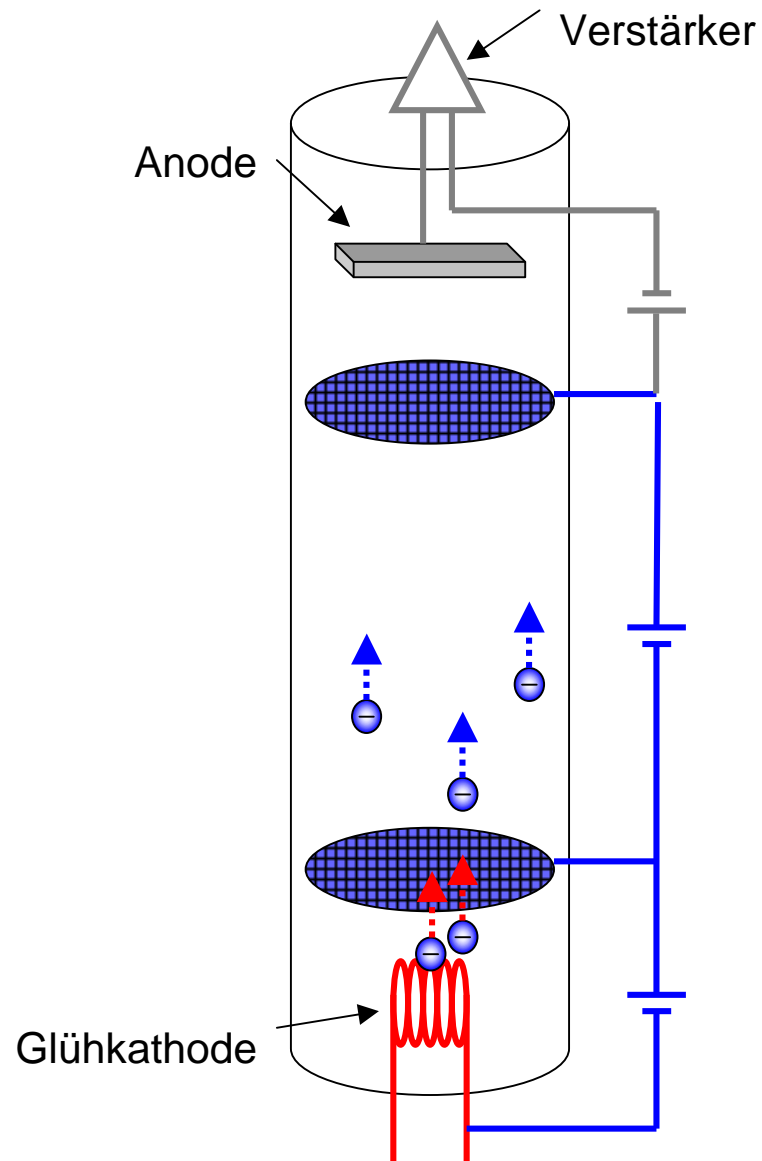


# Franck-Hertz-Versuch

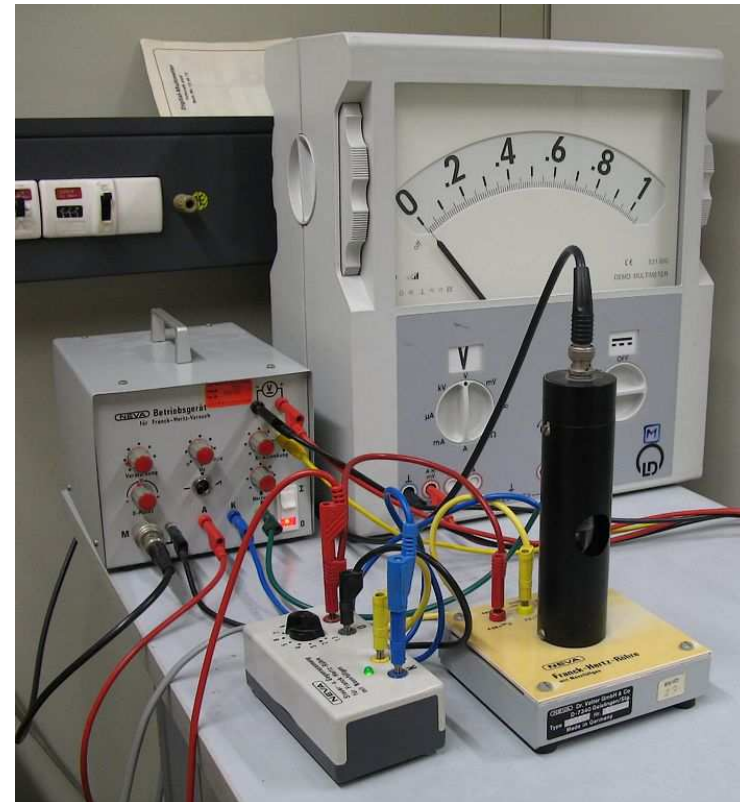
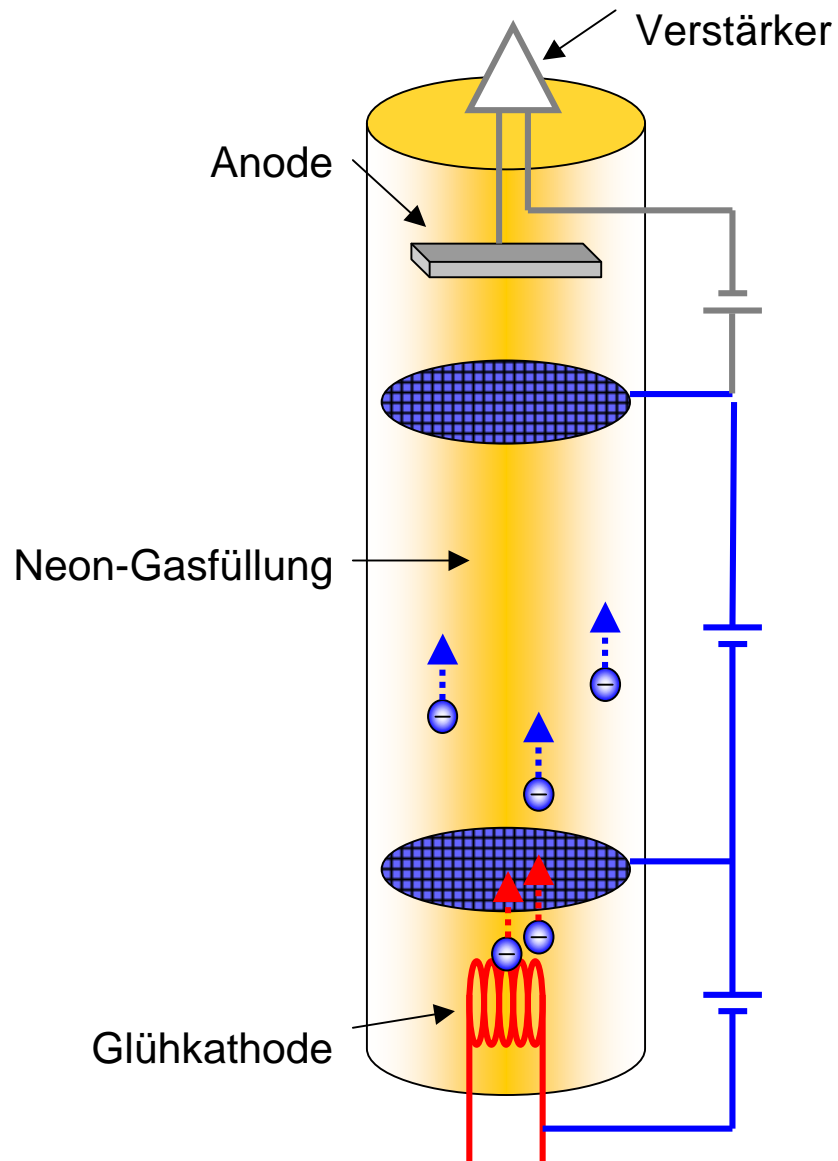




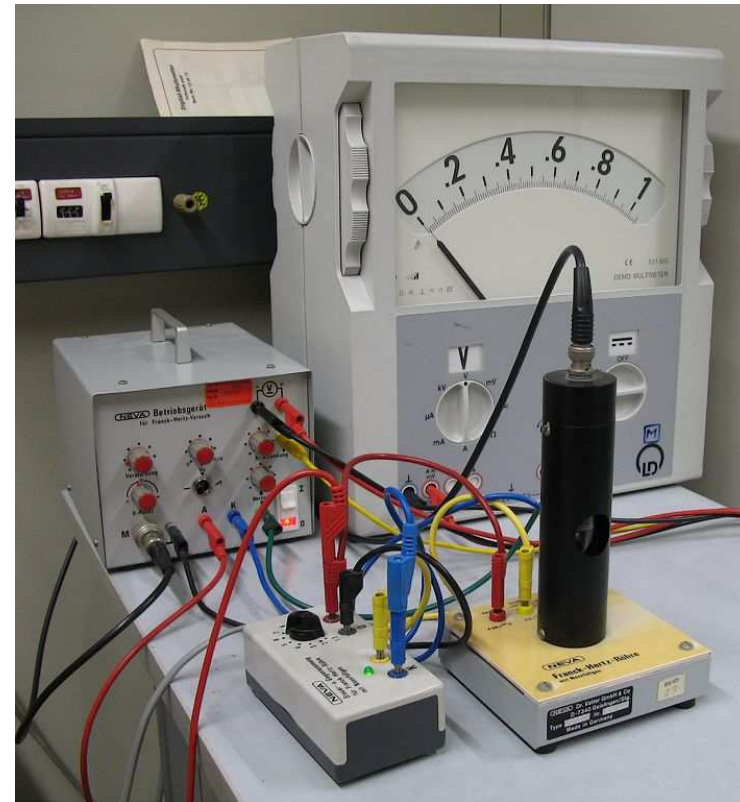
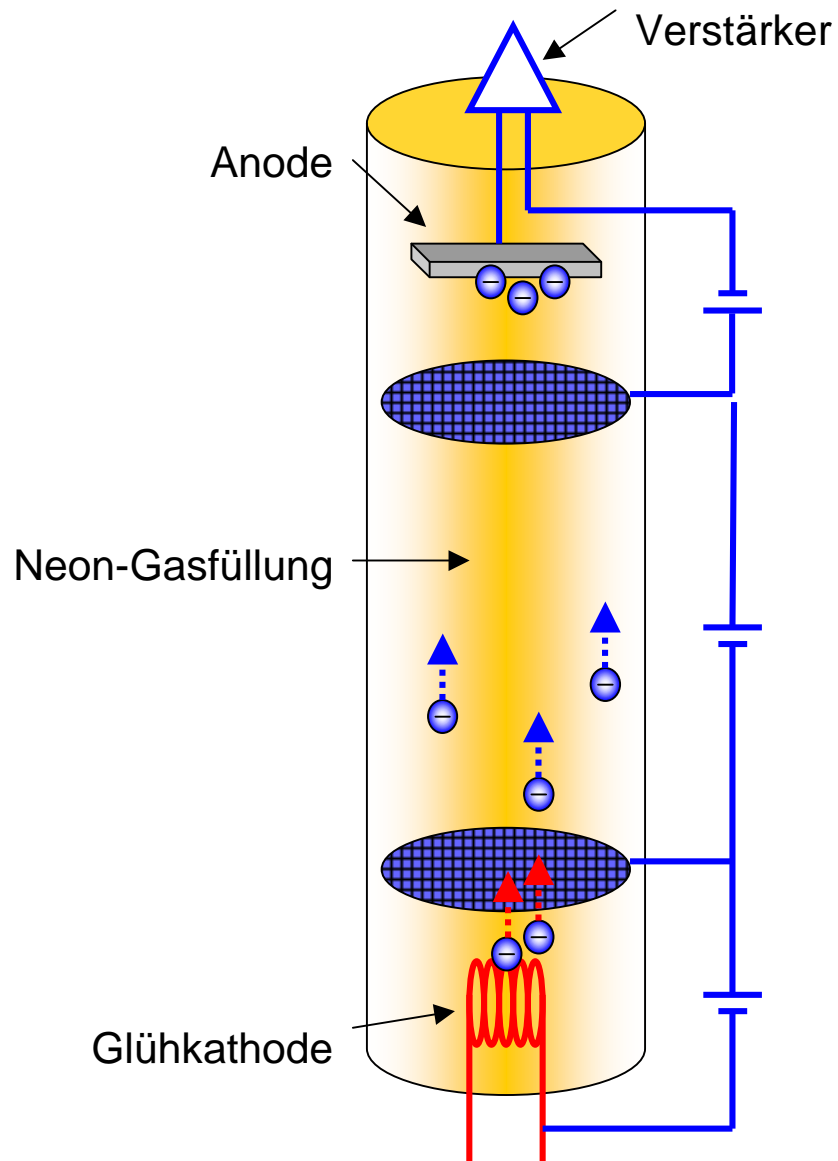
# Franck-Hertz-Versuch



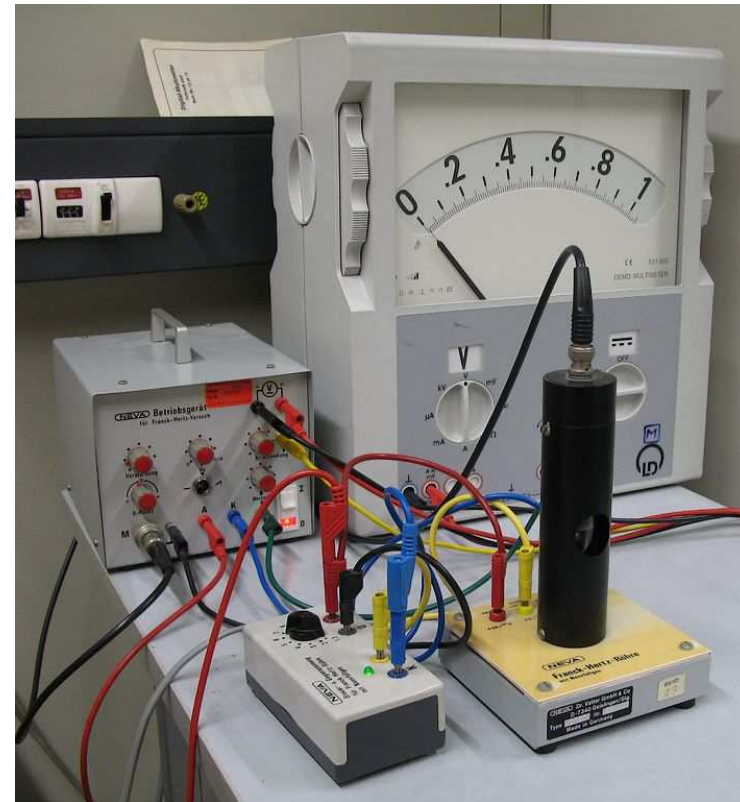
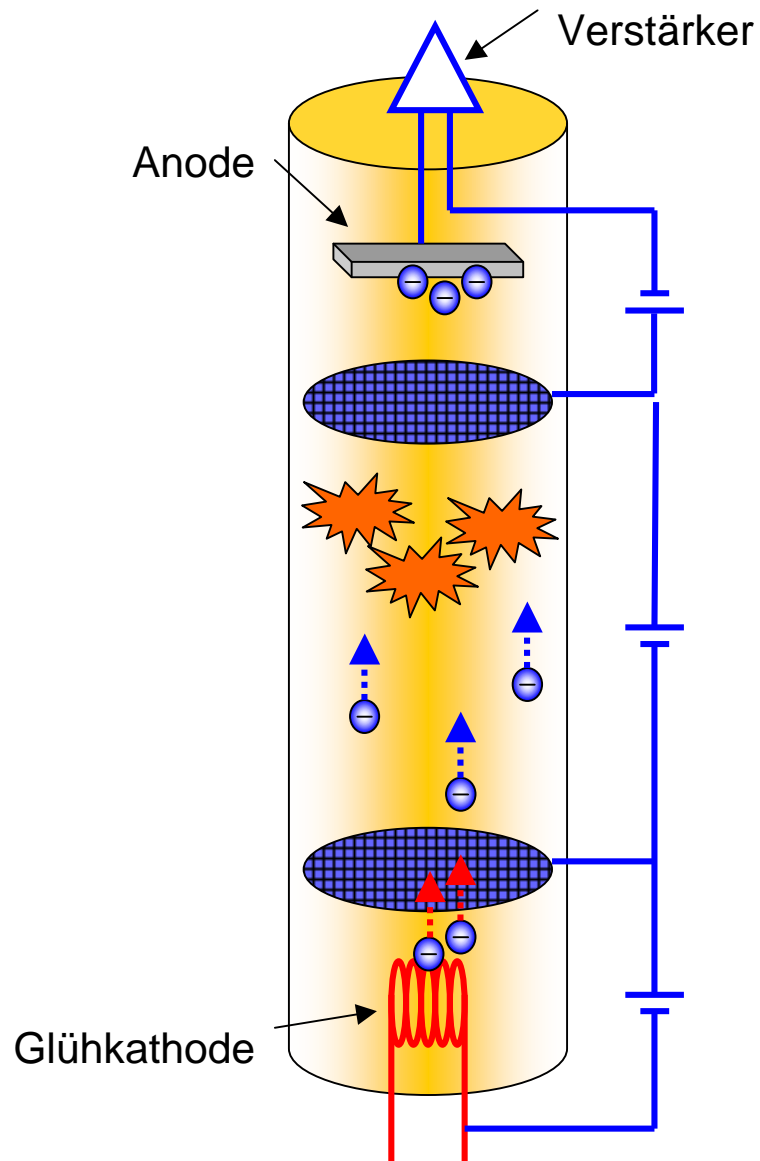
# Franck-Hertz-Versuch



# Franck-Hertz-Versuch

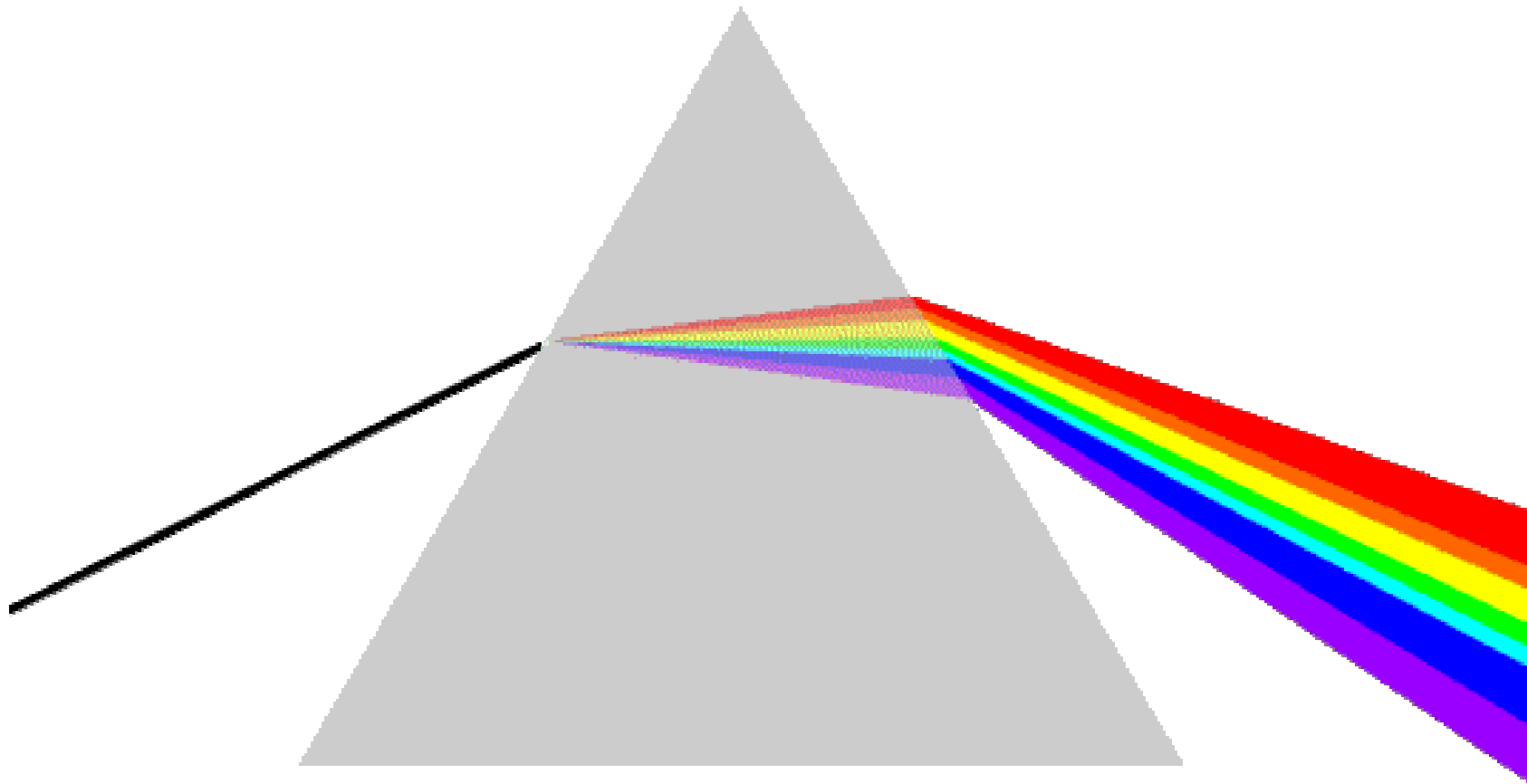


# Franck-Hertz-Versuch



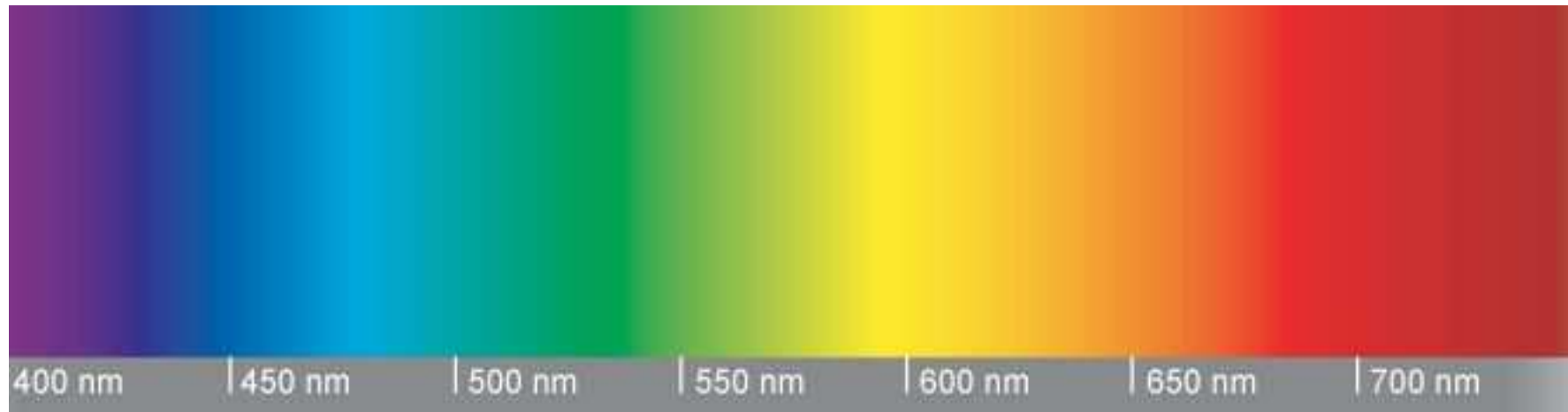
# Spektroskopie

---



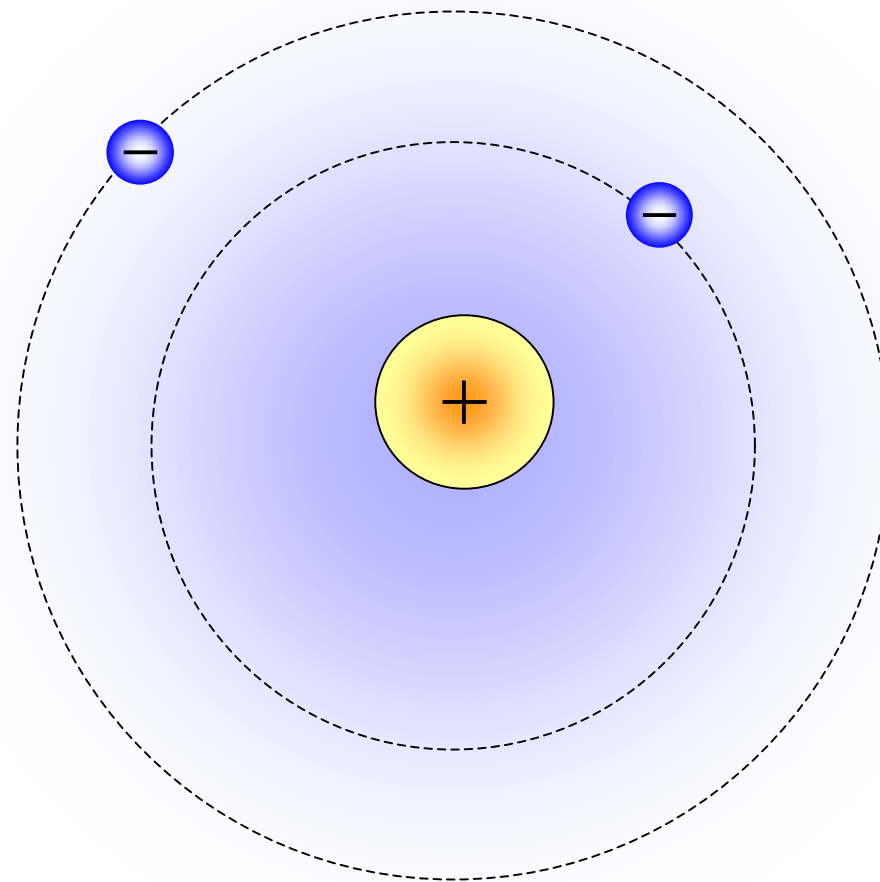
# Lichtspektrum

---

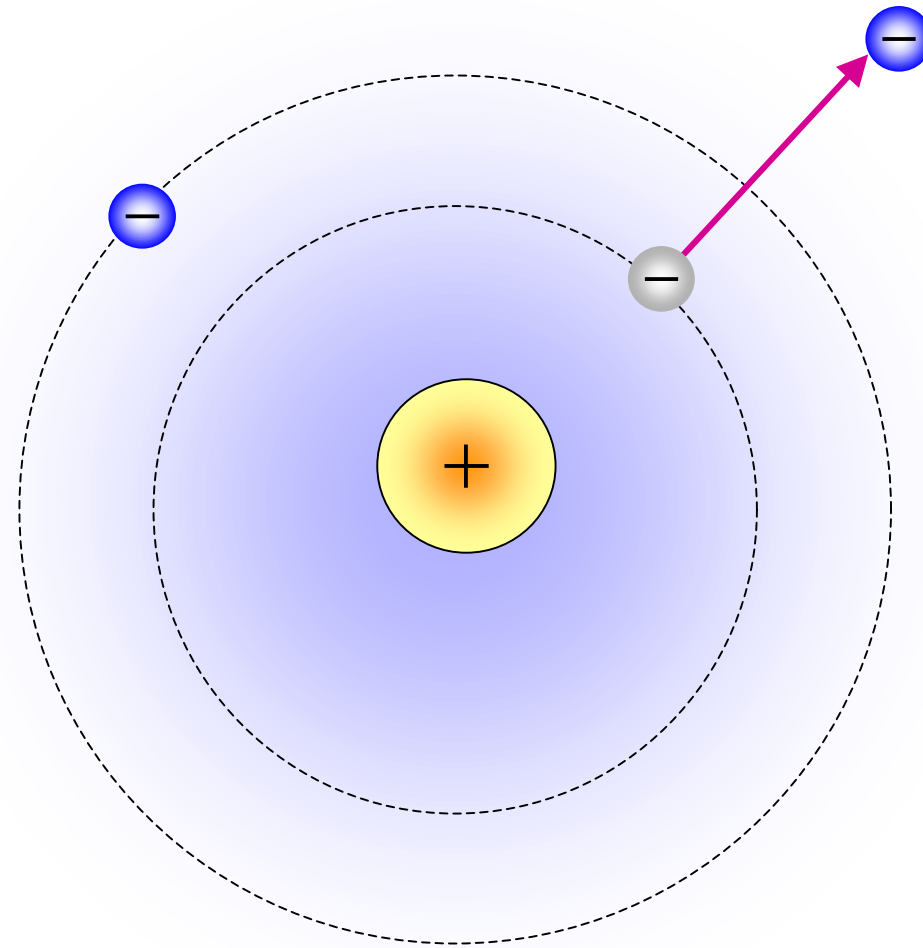


# Spektroskopie

---

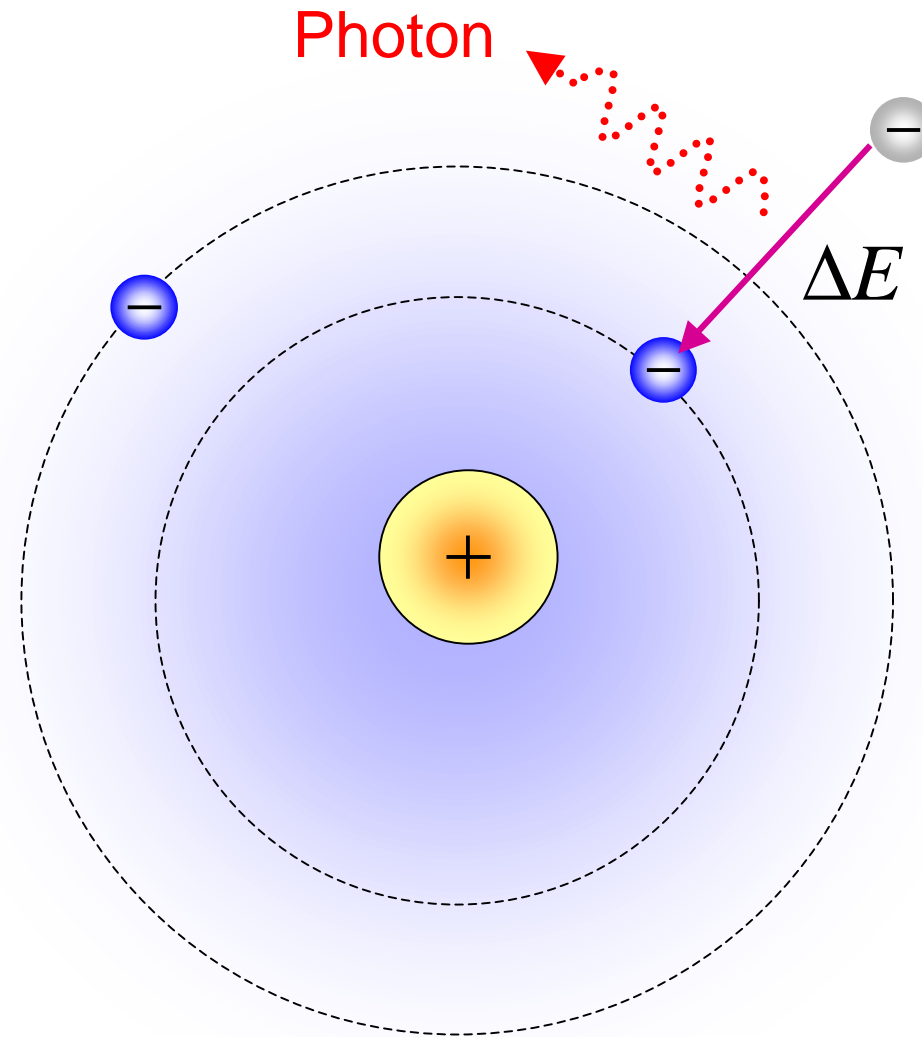


# Spektroskopie

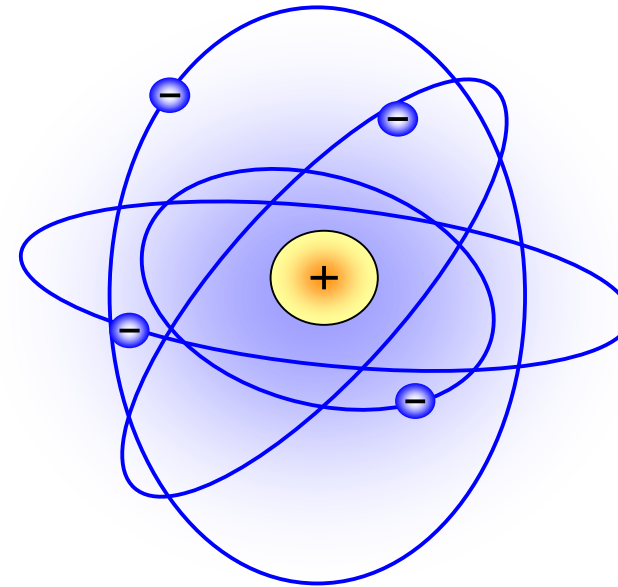
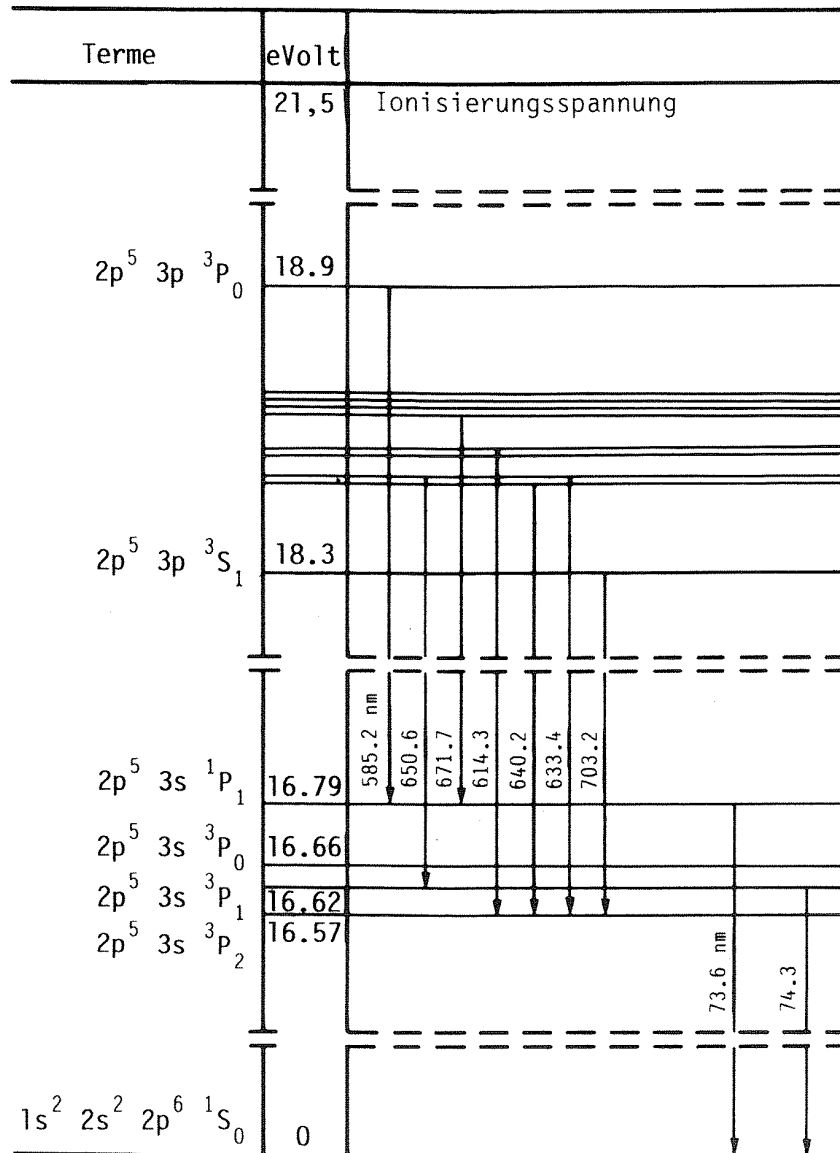




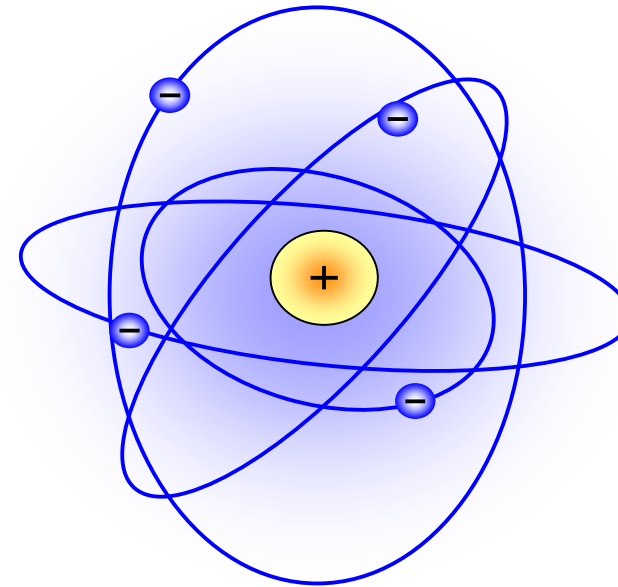
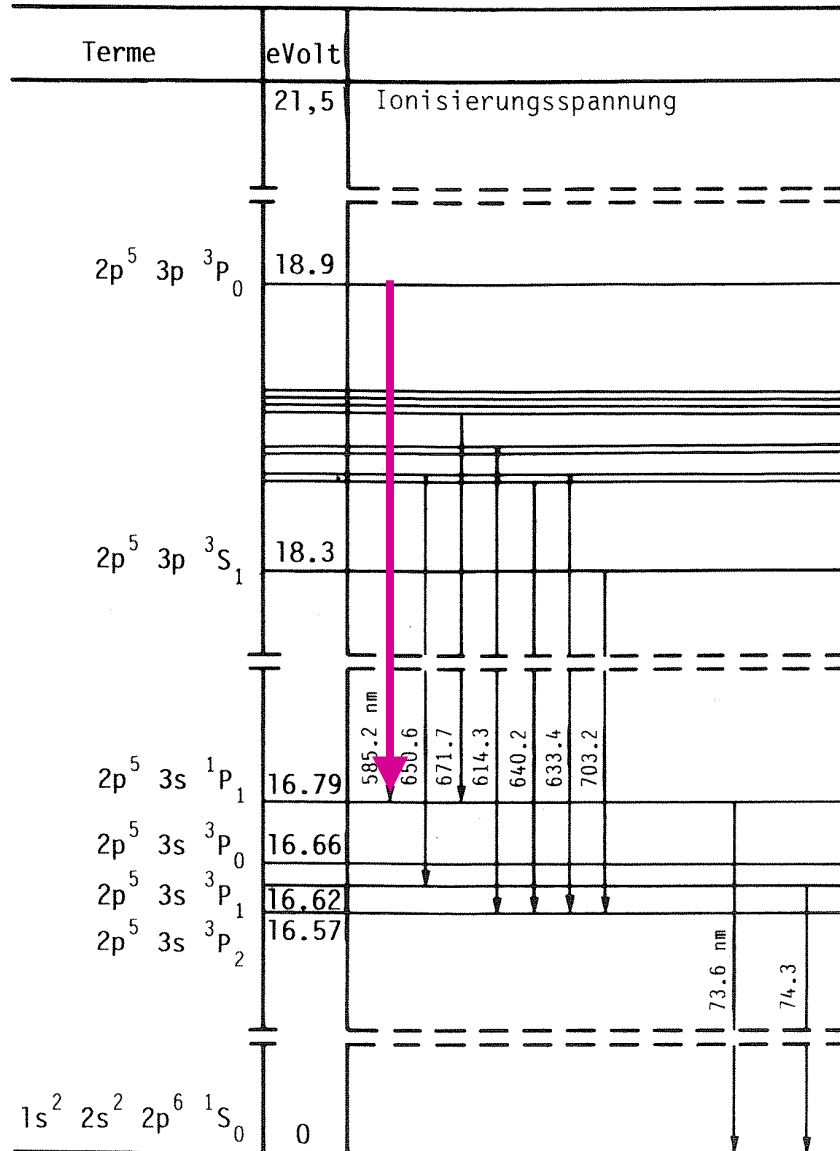
# Spektroskopie



# Termschemata

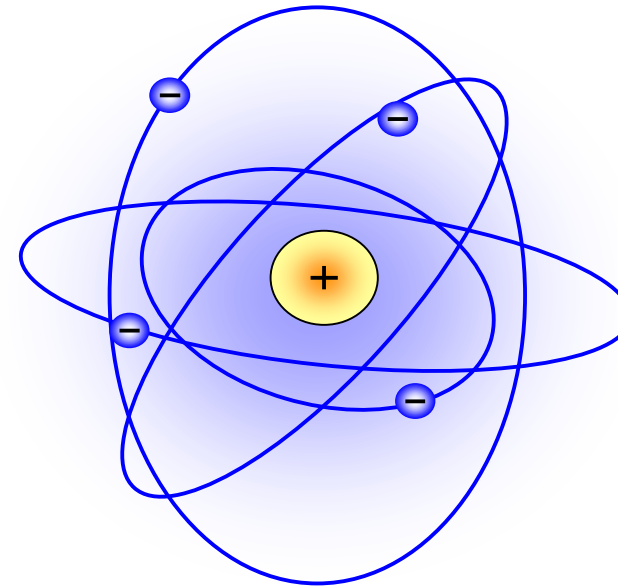
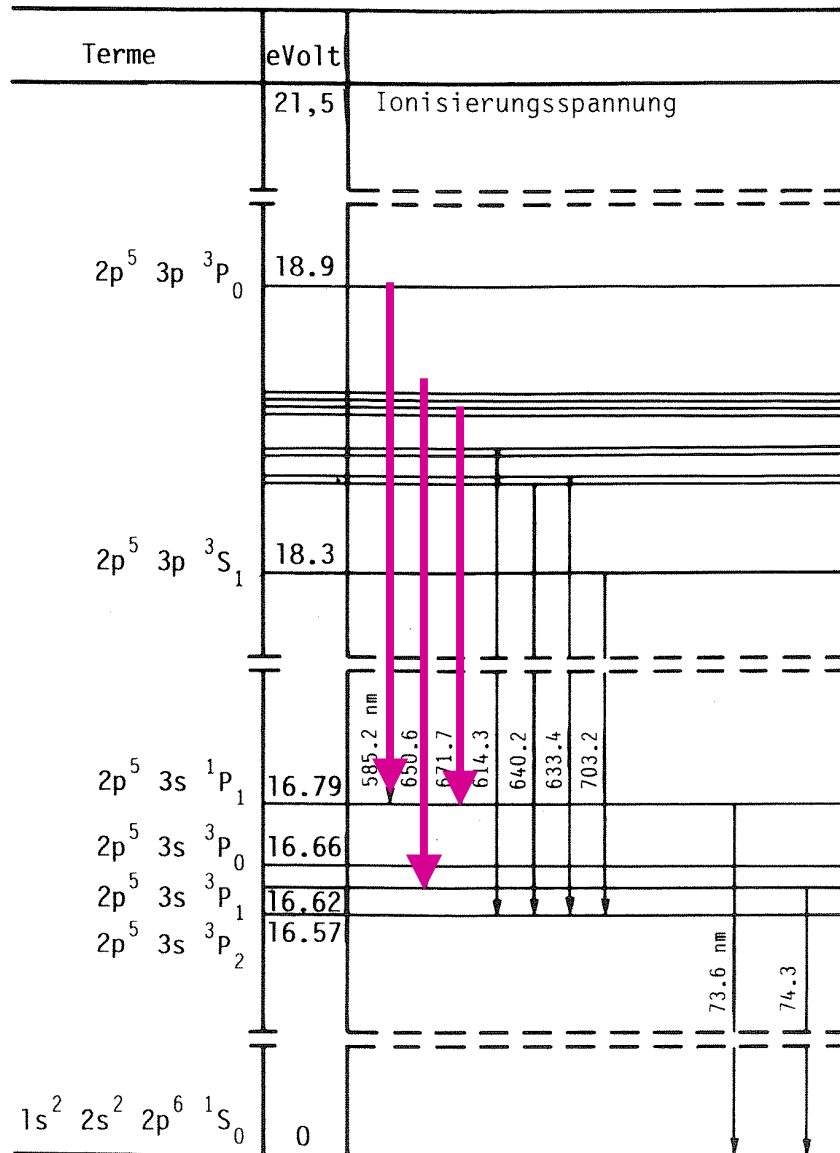


# Termschemata

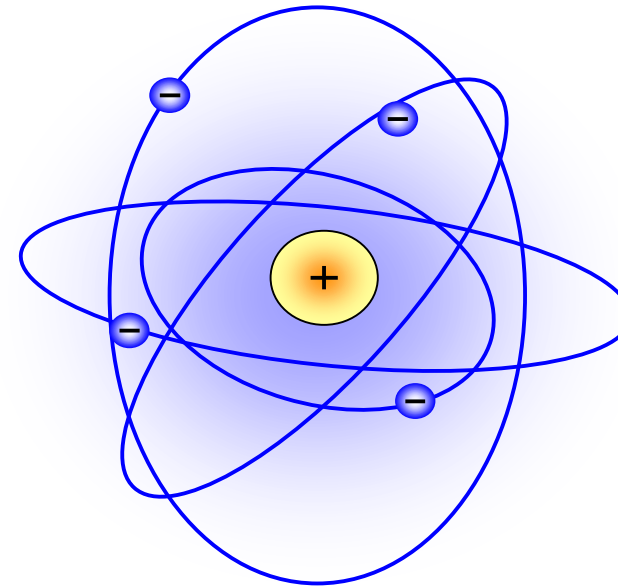
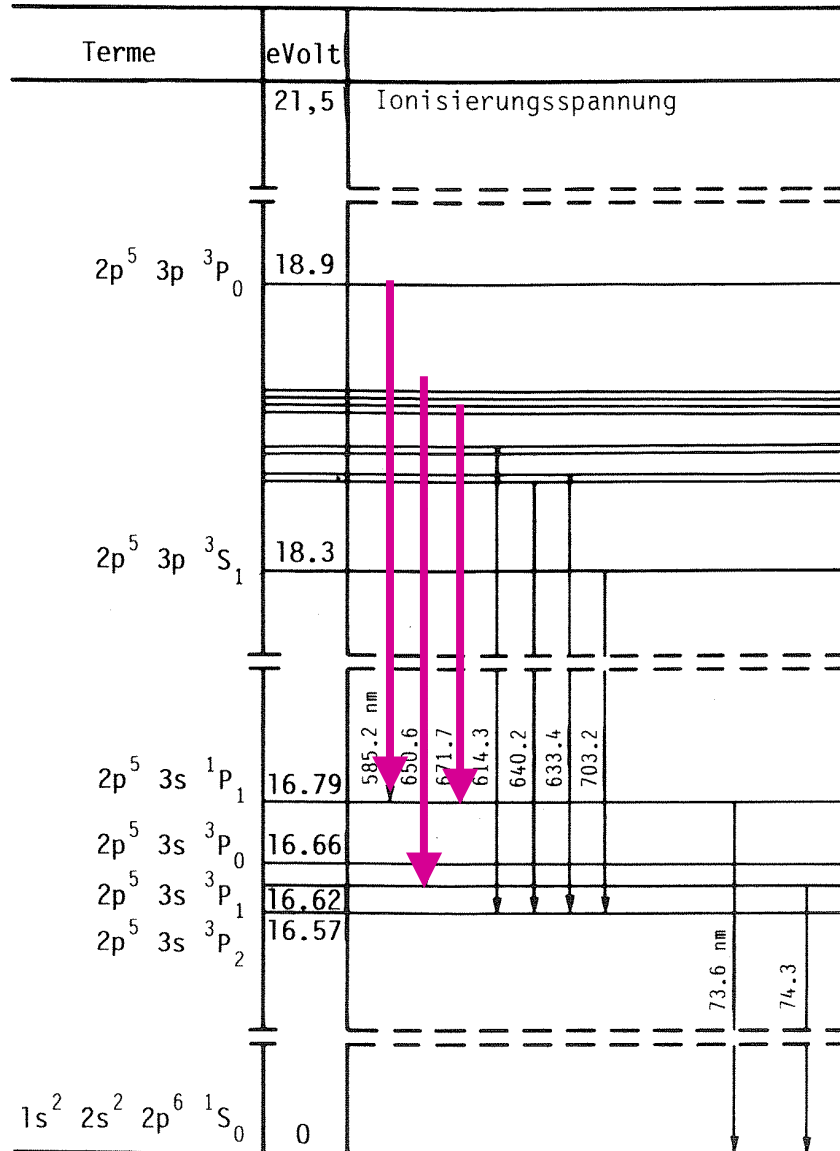




# Termschemata



# Termschemata



18

Periodensystem der Elemente

1											13	14	15	16	17	18		
1	H											He						
2	Li	Be											B	C	N	O	F	Ne
3	Na	Mg											Al	Si	P	S	Cl	Ar
4	K	Ca	Sc	Ti	V	Cr	Mn	Fe	Co	Ni	Cu	Zn	Ga	Ge	As	Se	Br	Kr
5	Rb	Sr	Y	Zr	Nb	Mo	Tc	Ru	Rh	Pd	Ag	Cd	In	Sn	Sb	Te	I	Xe
6	Cs	Ba	La-Lu	Hf	Ta	W	Re	Os	Ir	Pt	Au	Hg	Tl	Pb	Bi	Po	At	Rn
7	Fr	Ra	Ac-Lr	Rf	Db	Sg	Bh	Hs	Mt	Ds								

© Peter Wlich - Experimentalchemie.de - Chemie erleben!

138.91	140.12	144.24	144.24	145	150.36	151.97	167.26	158.93	162.50	164.93	167.26	173.04	174.97
La	Ce	Pr	Nd	Pm	Sm	Eu	Gd	Tb	Dy	Ho	Er	Tm	Lu
Lanthan	Cer	Praseodym	Neodym	Promethium	Samarium	Europium	Gadolinium	Terbium	Dysprosium	Hoium	Erbium	Thulium	Lutetium
227.03	232.04	231.04	238.03	237	244	243	247	247	251	252	257	258	260
Ac	Th	Pa	U	Np	Pu	Am	Cm	Bk	Cf	Es	Fm	Md	Lr
Actinium	Thorium	Protactinium	Uran	Neptunium	Plutonium	Americium	Curium	Berkelium	Californium	Einsteinium	Fermium	Mendelevium	Livermorium