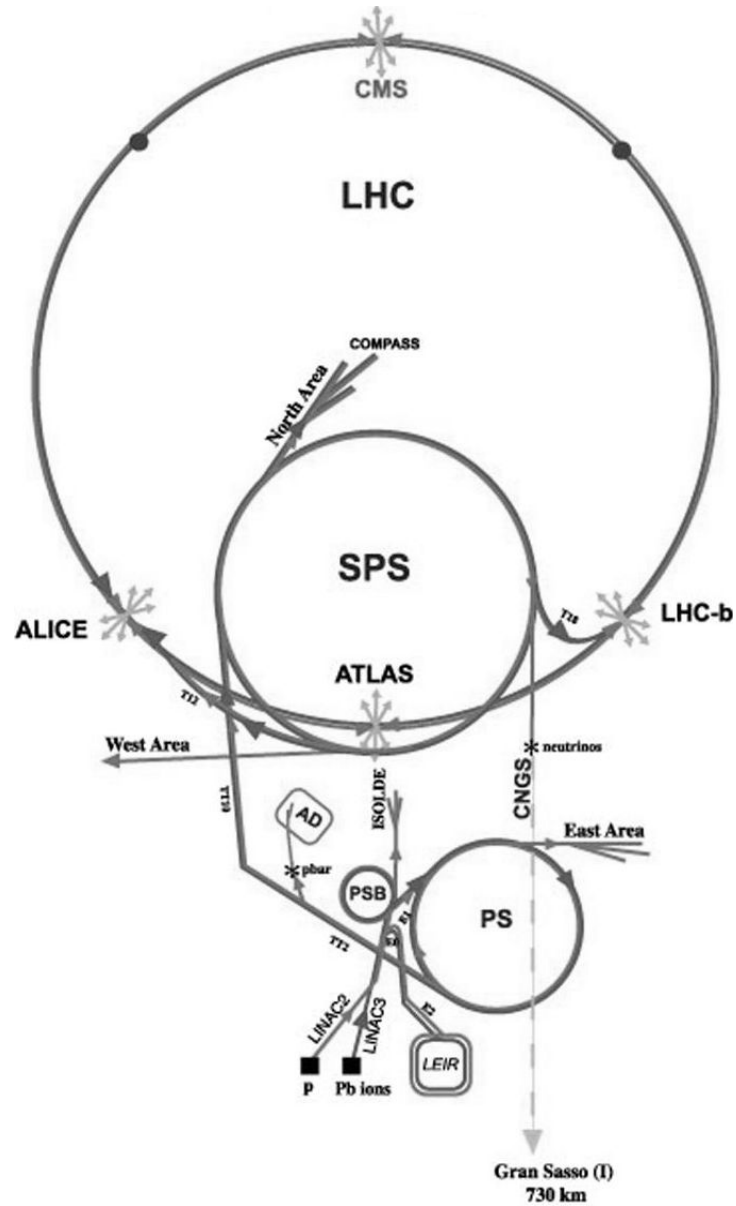


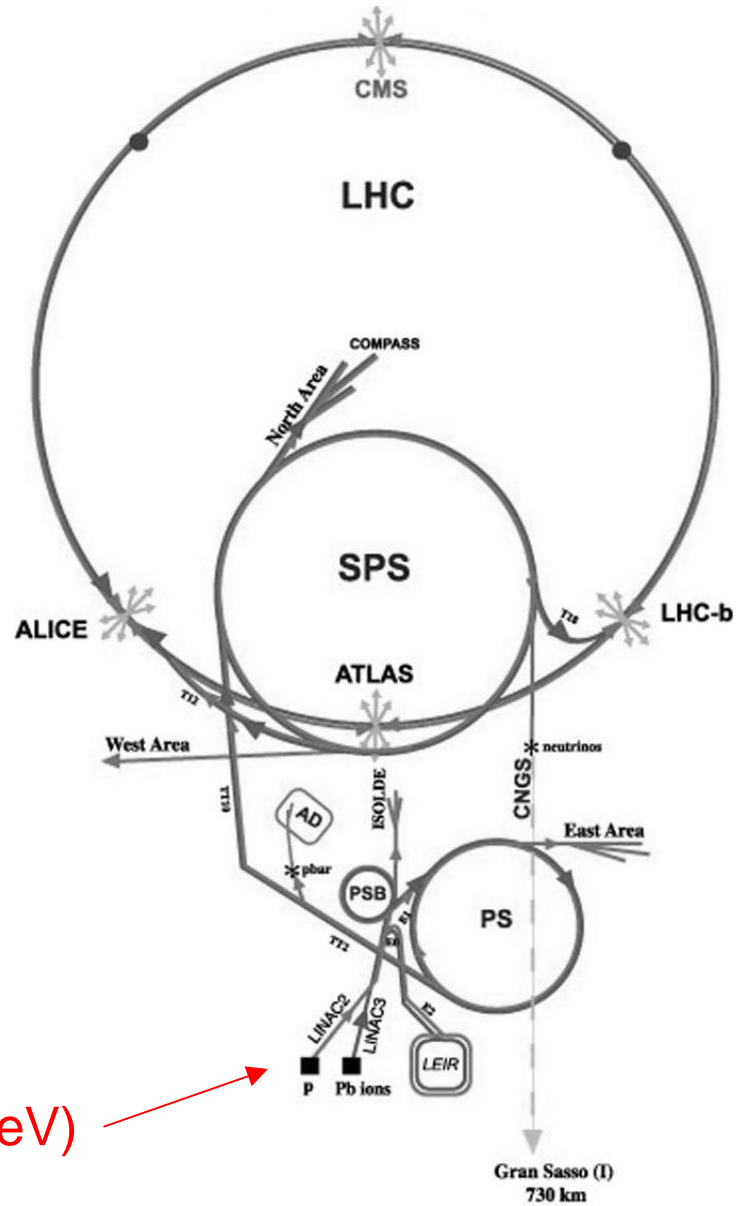
Teil 8: Teilchenbeschleuniger



LHC und Vorbeschleuniger

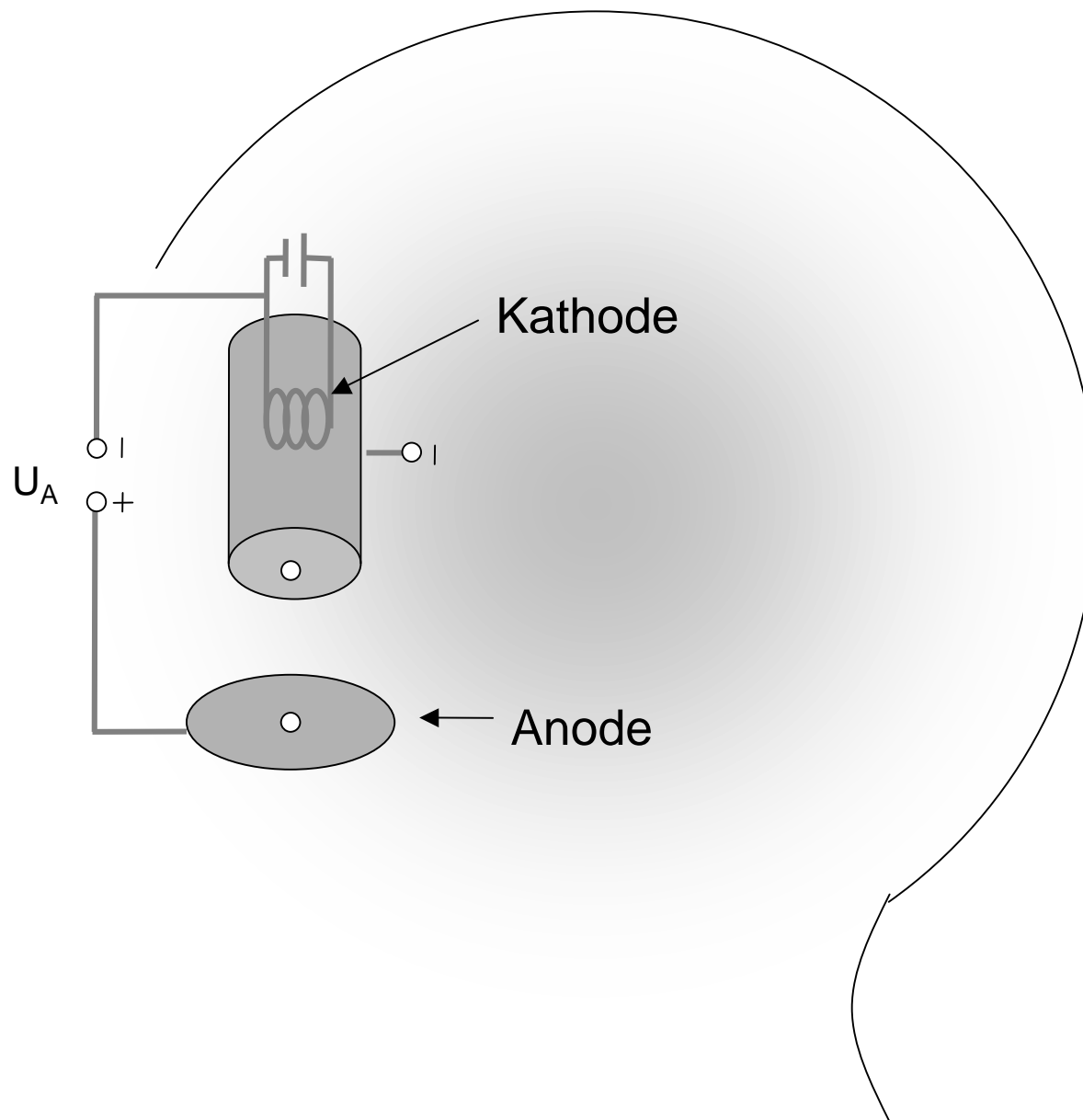


LHC und Vorbeschleuniger

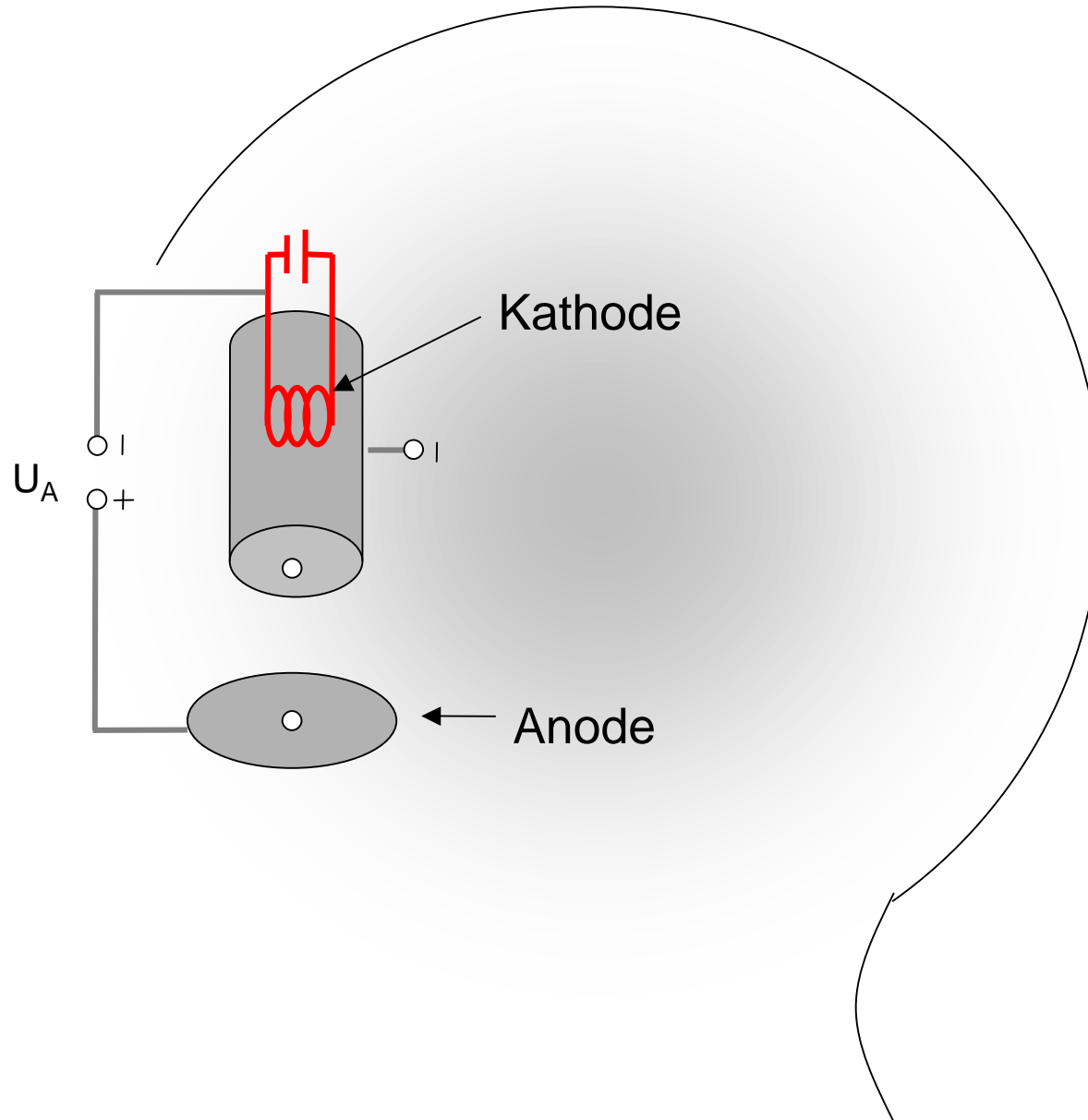


Quelle (90 keV)

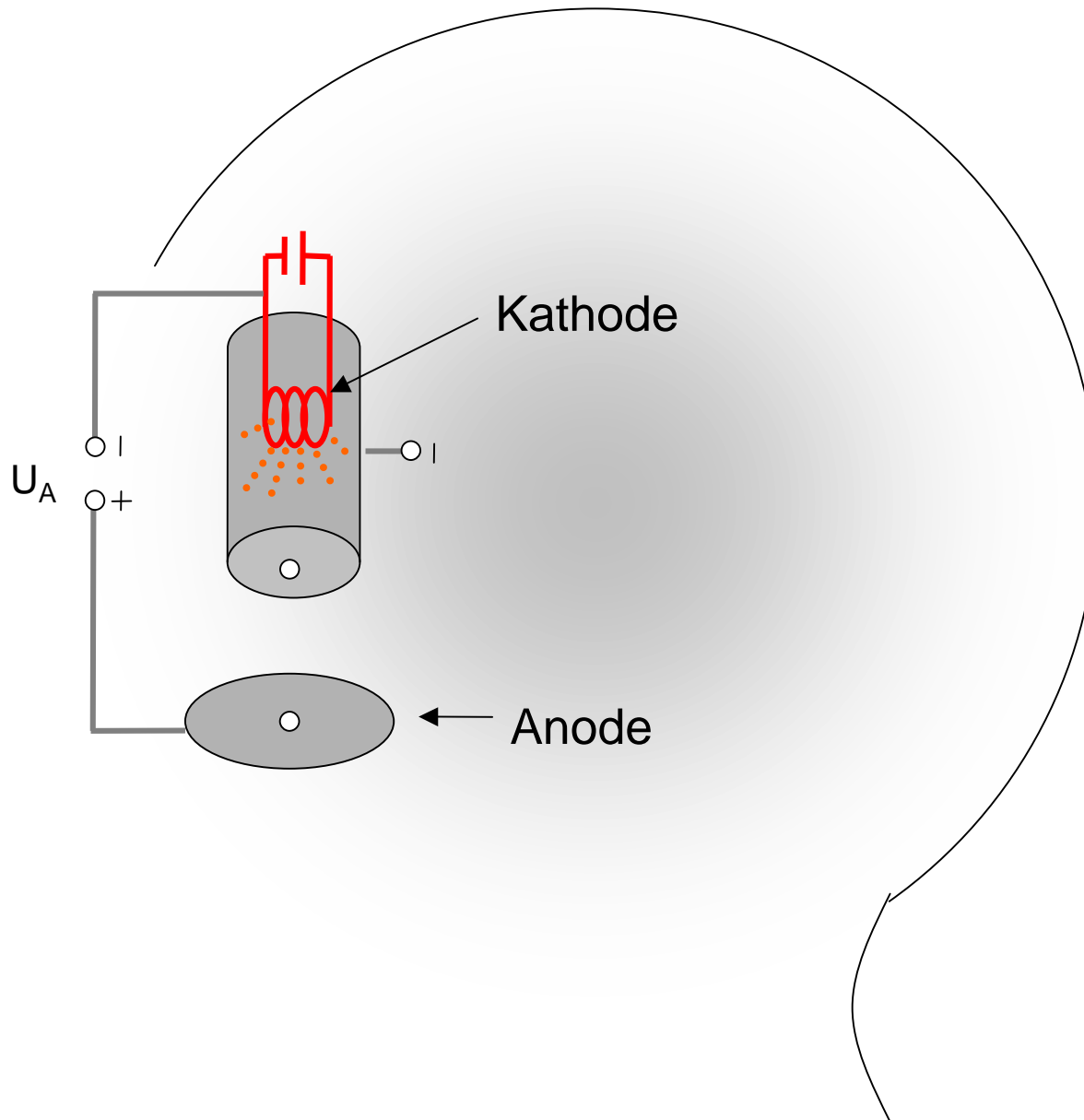
Fadenstrahlröhre



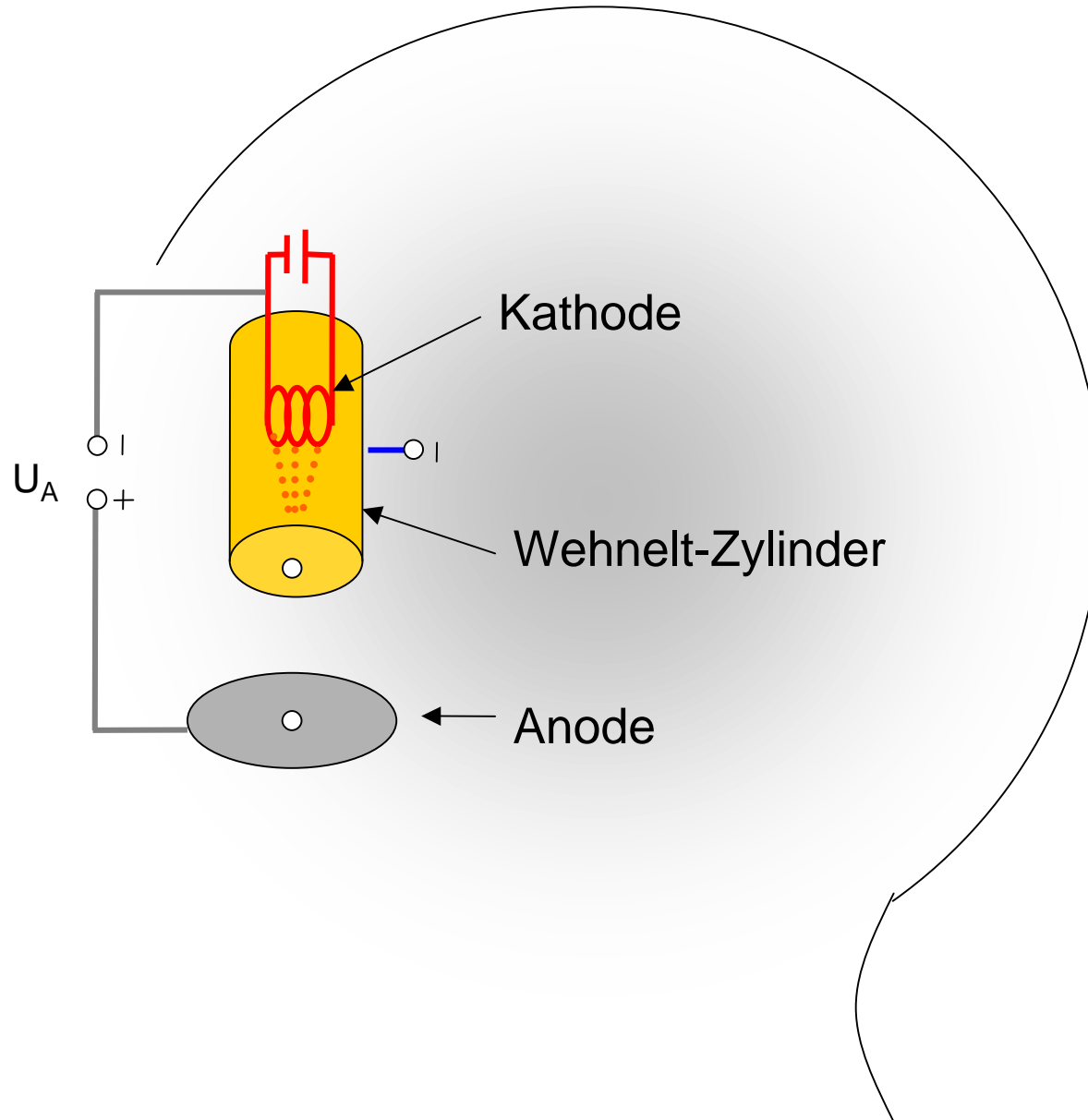
Fadenstrahlröhre



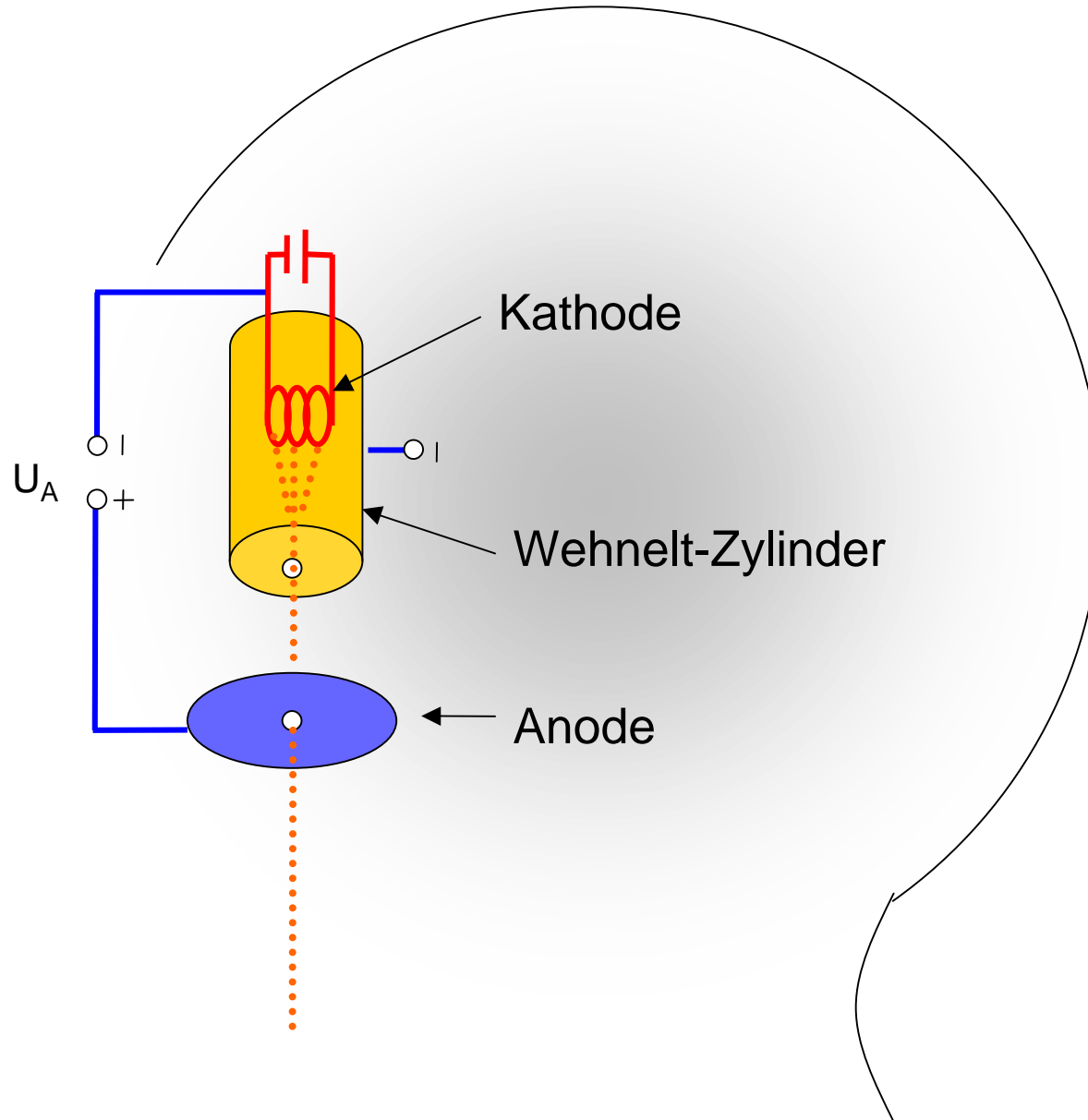
Fadenstrahlröhre

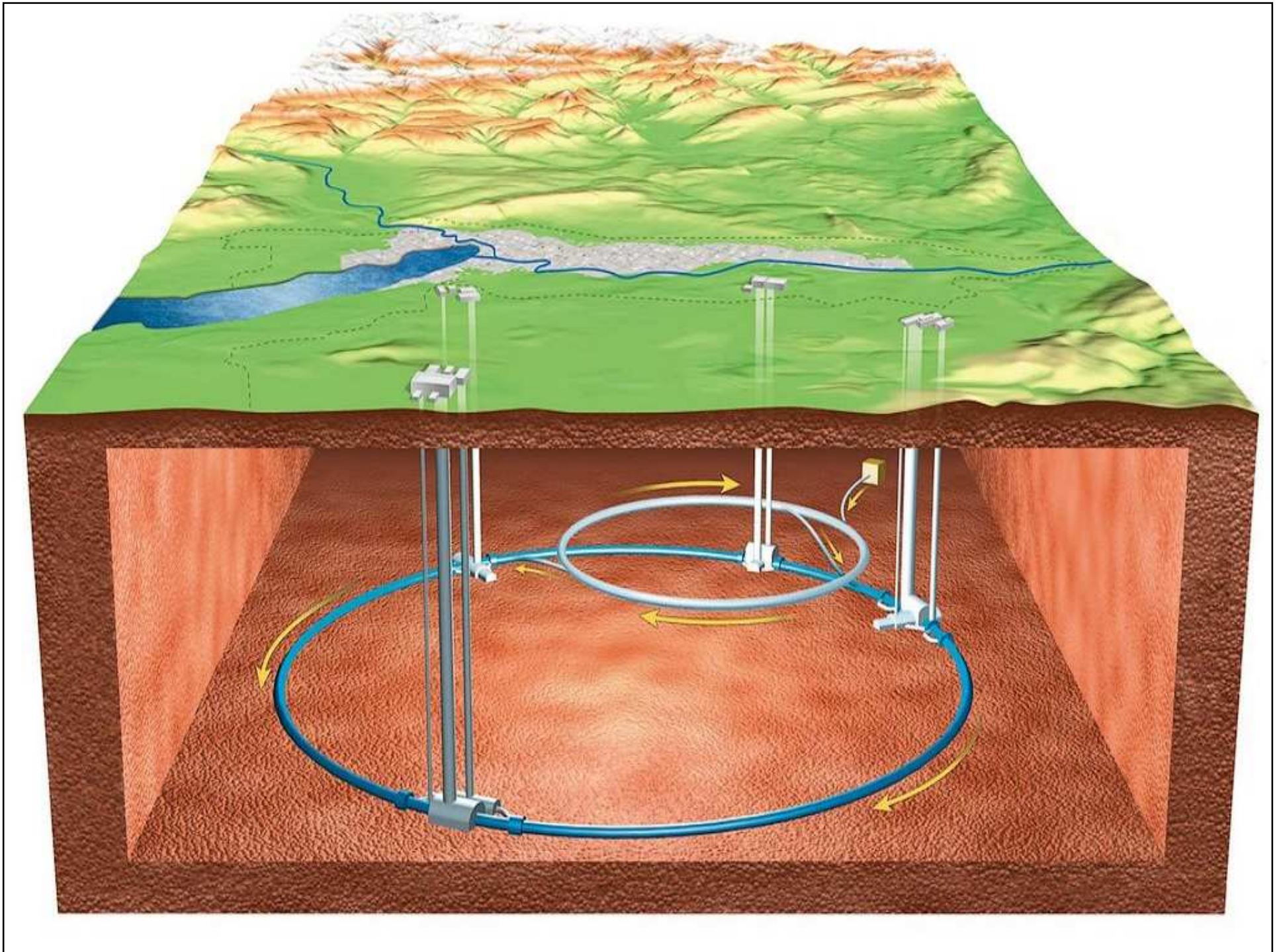


Fadenstrahlröhre



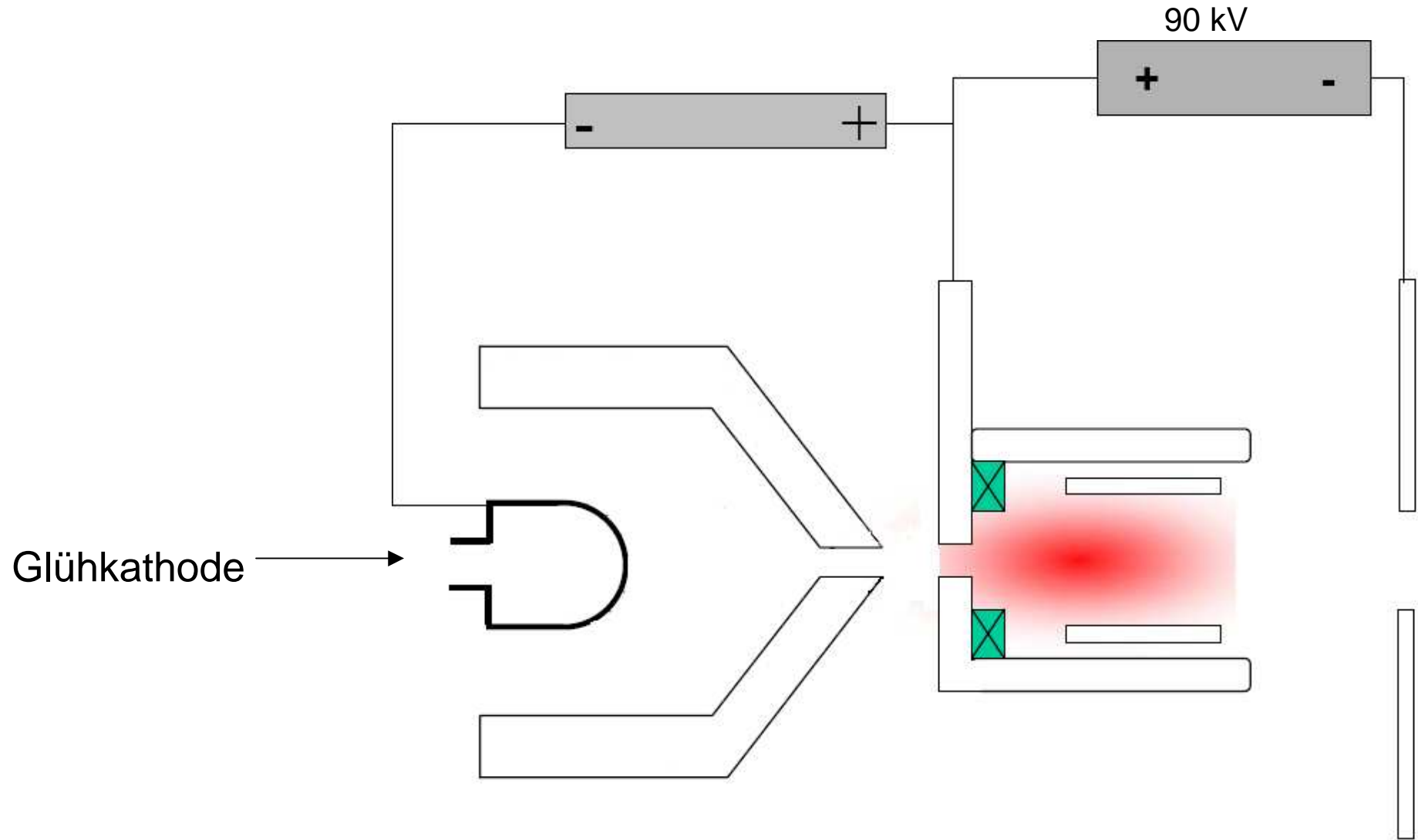
Fadenstrahlröhre



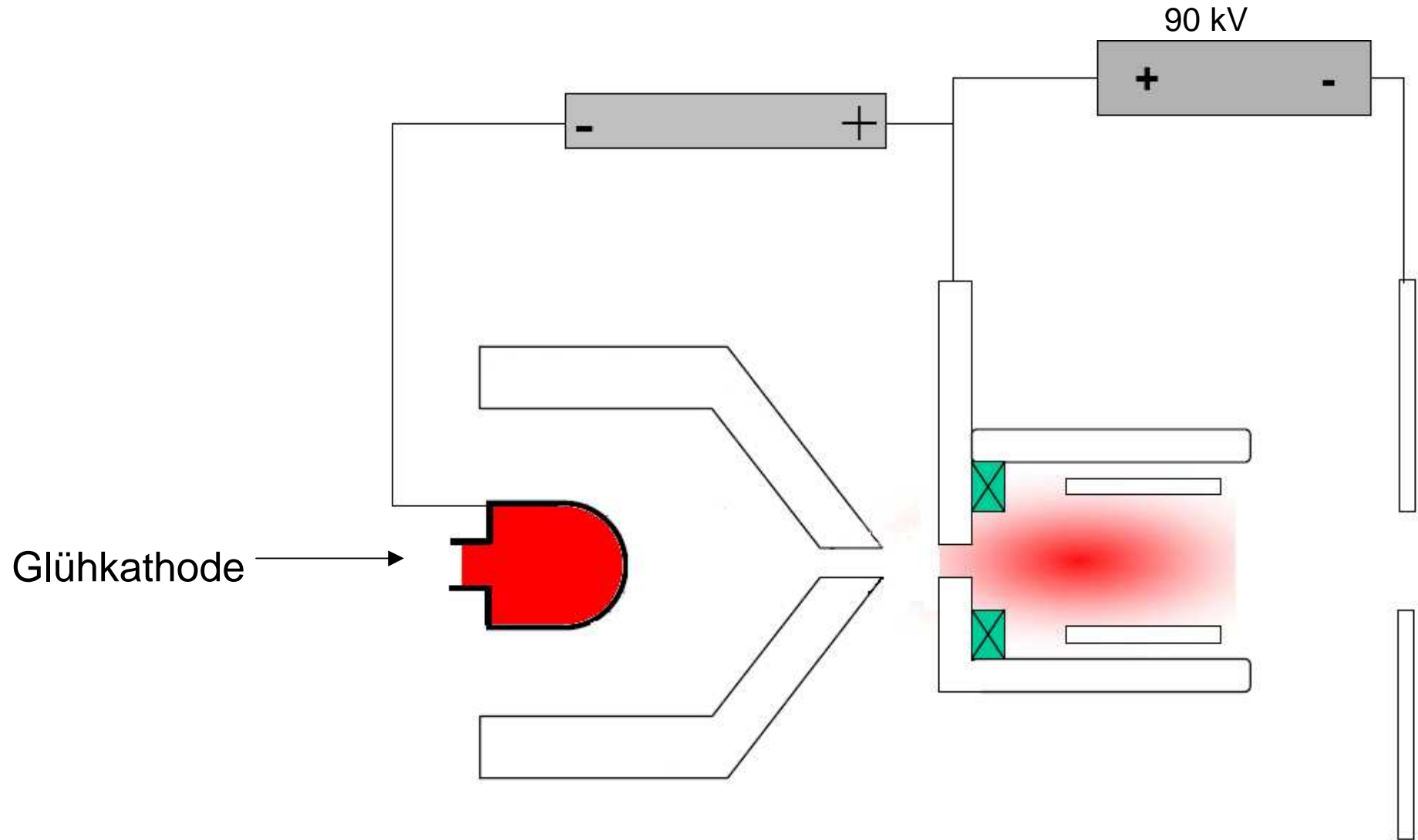




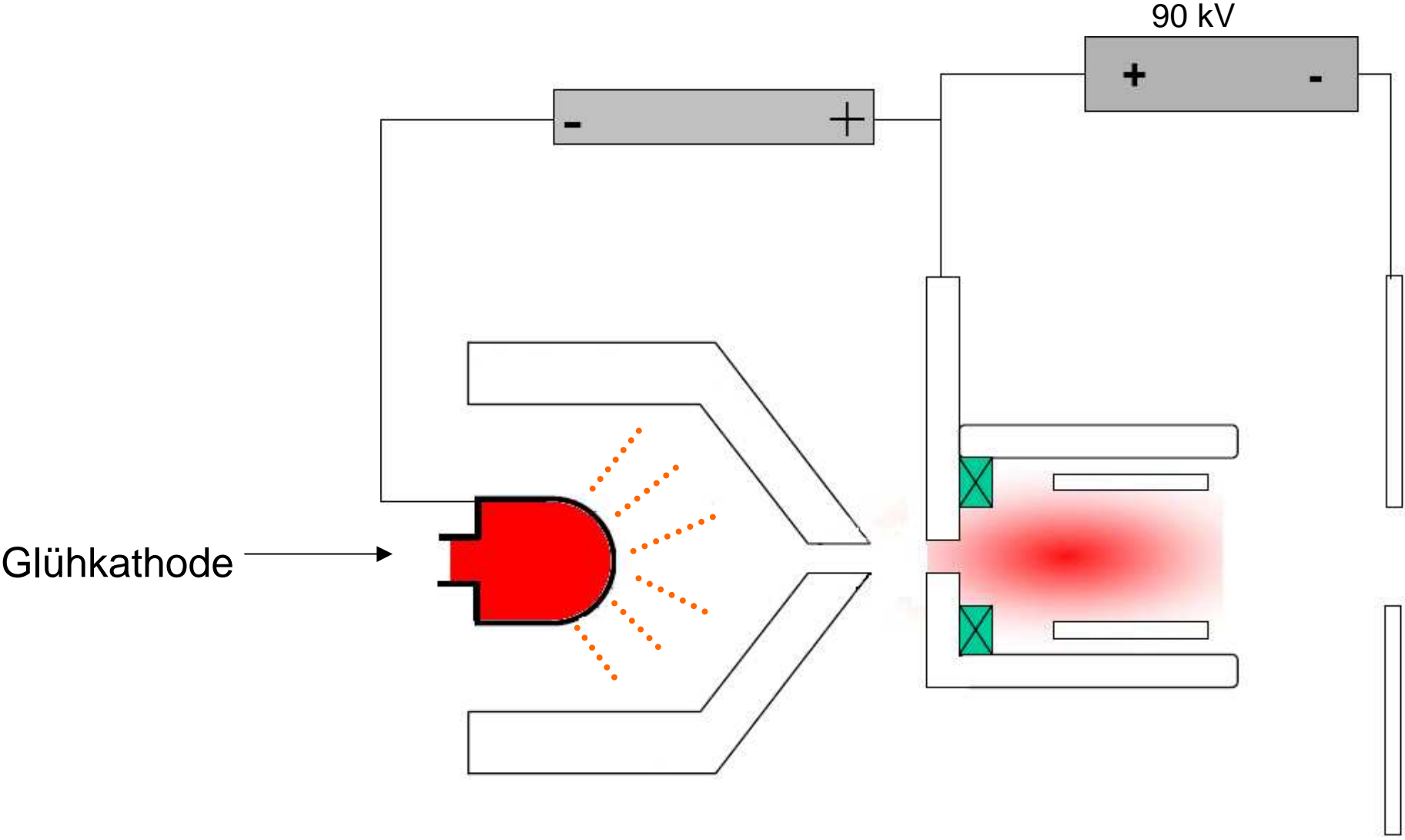
CERN-Protonenquelle



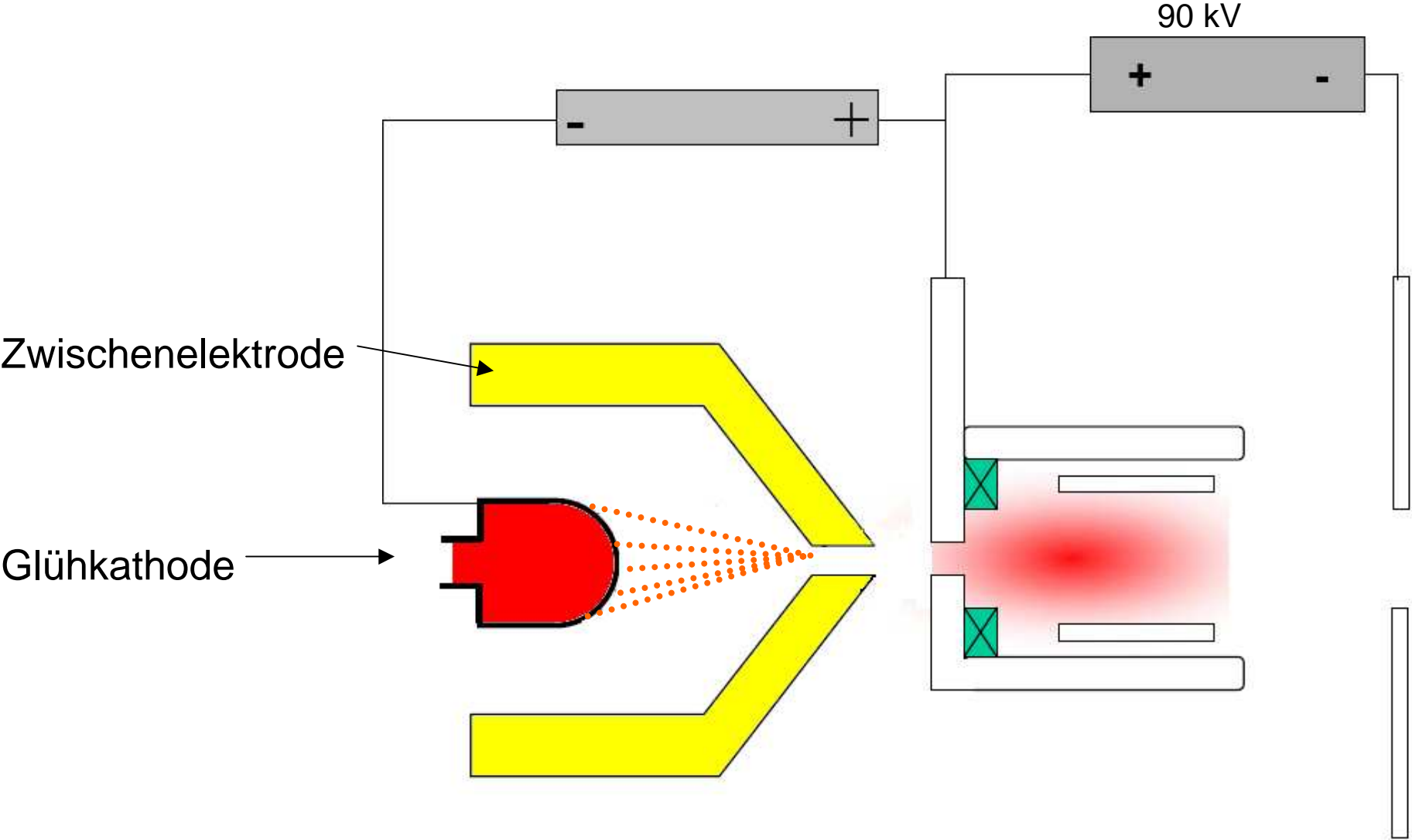
CERN-Protonenquelle



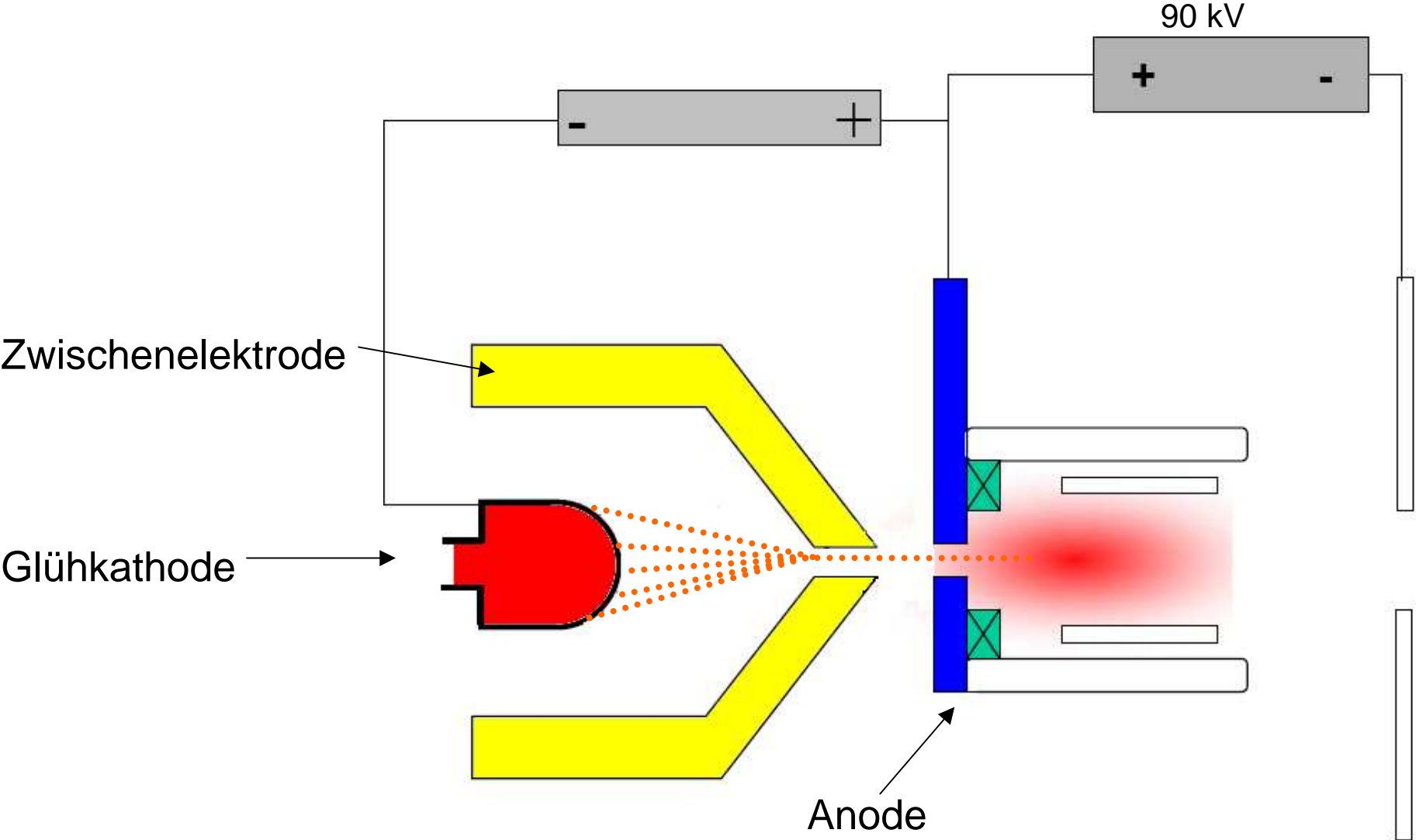
CERN-Protonenquelle



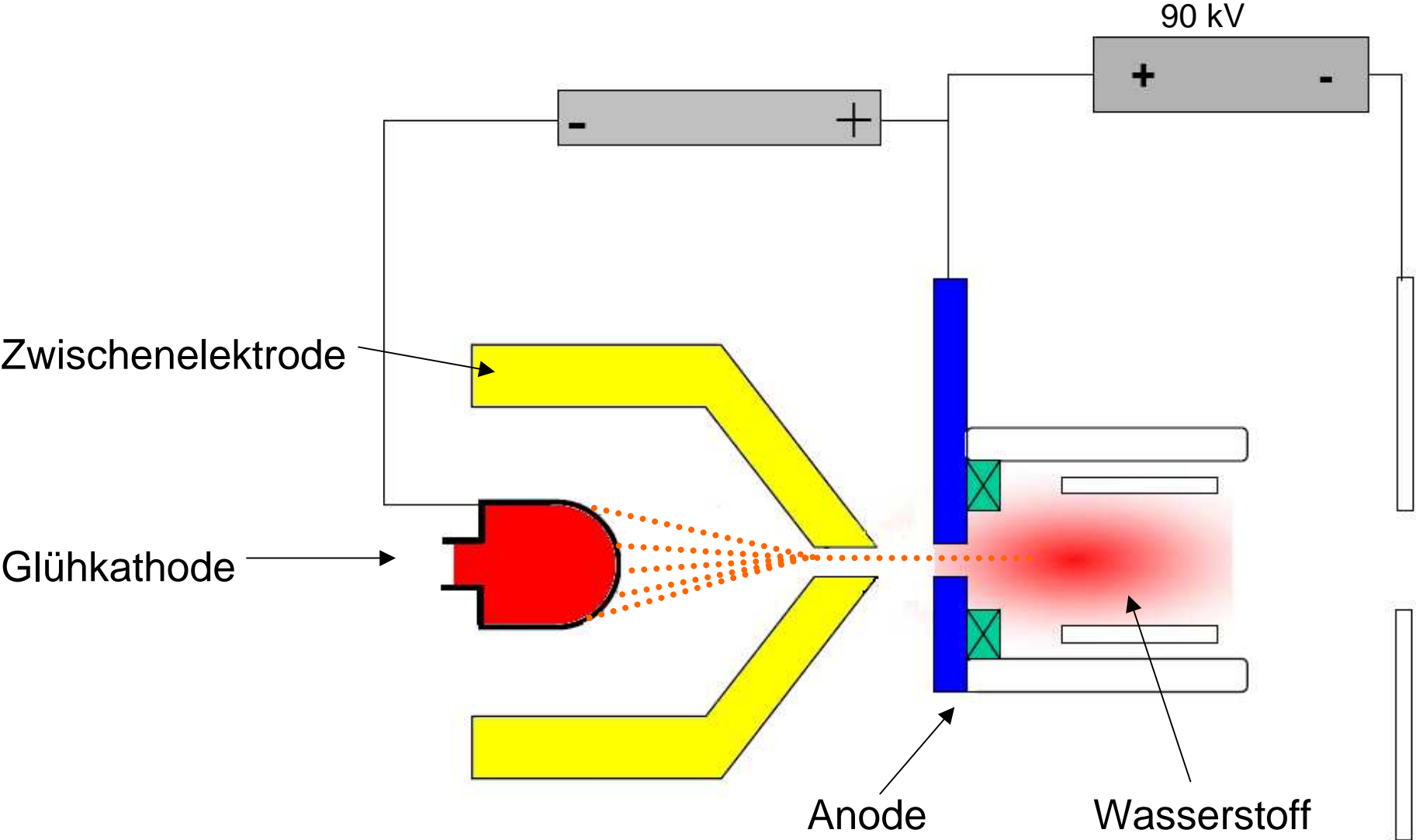
CERN-Protonenquelle



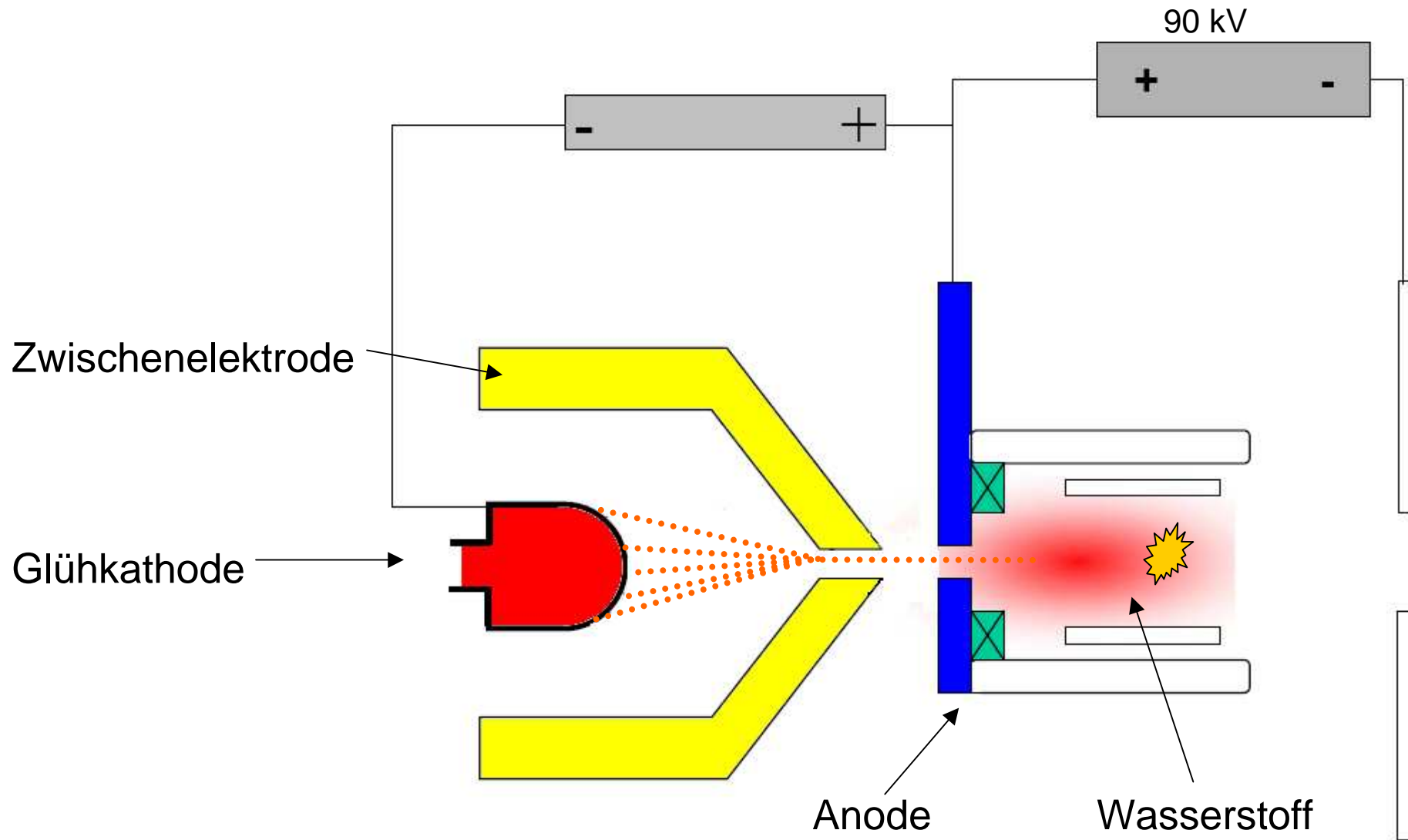
CERN-Protonenquelle



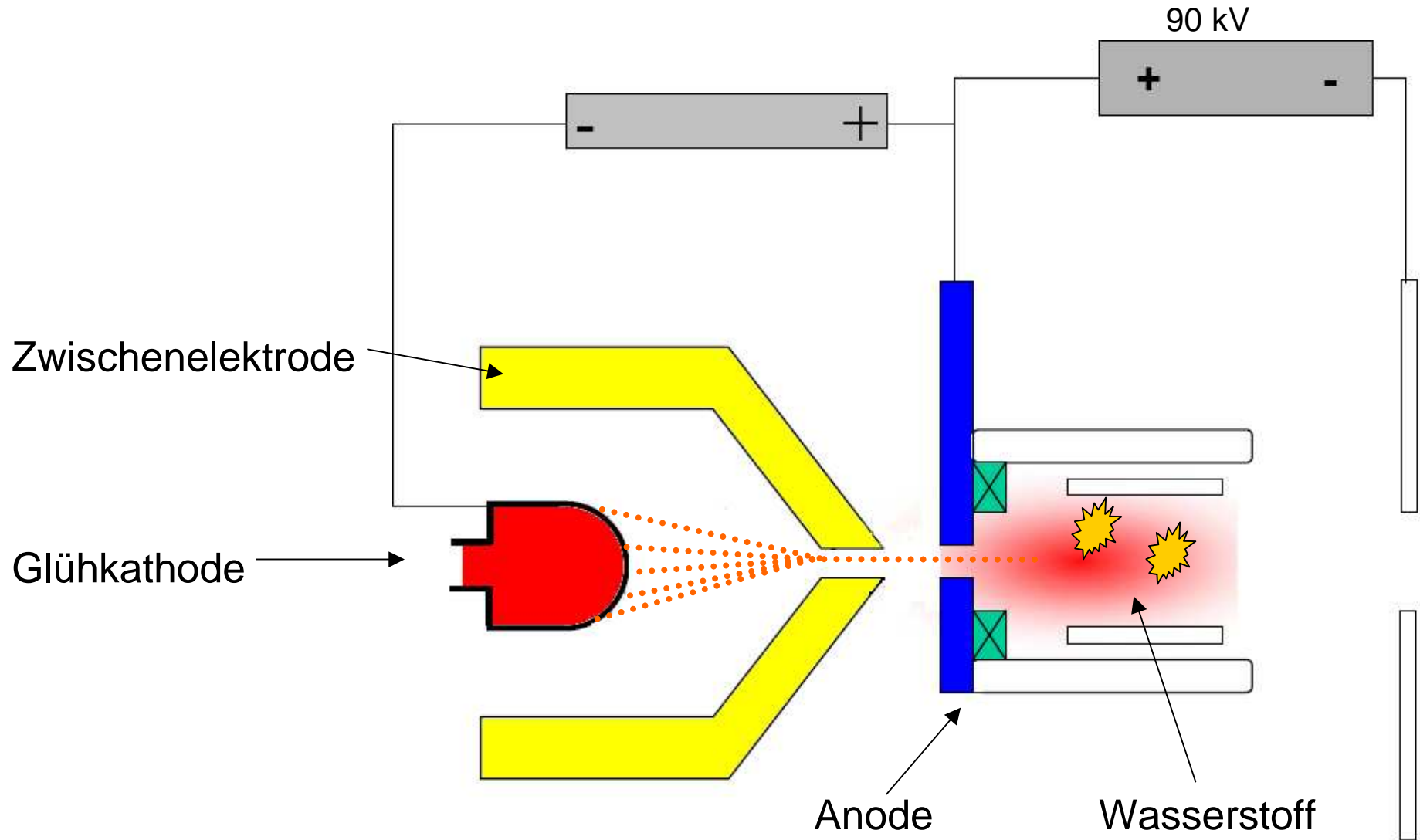
CERN-Protonenquelle



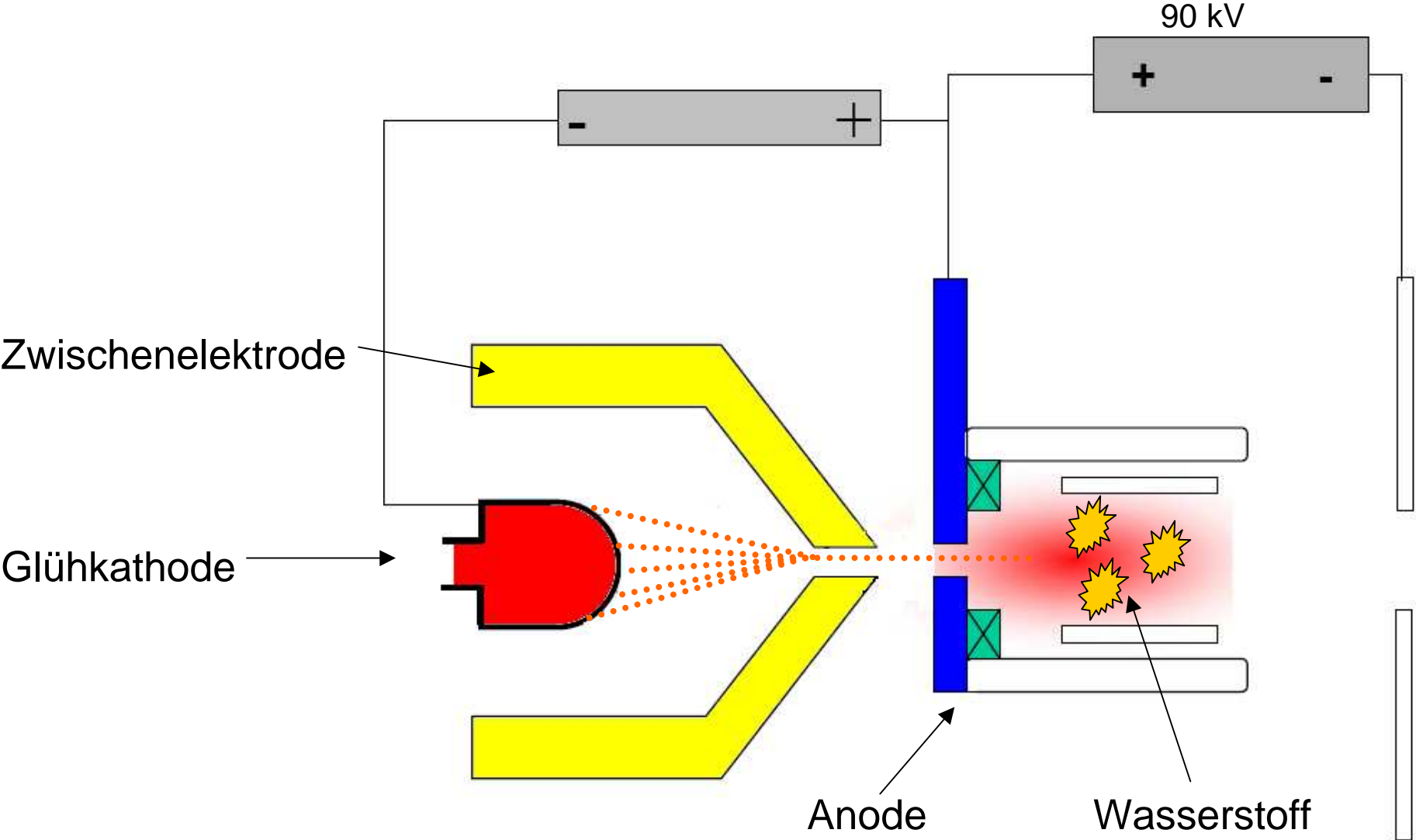
CERN-Protonenquelle



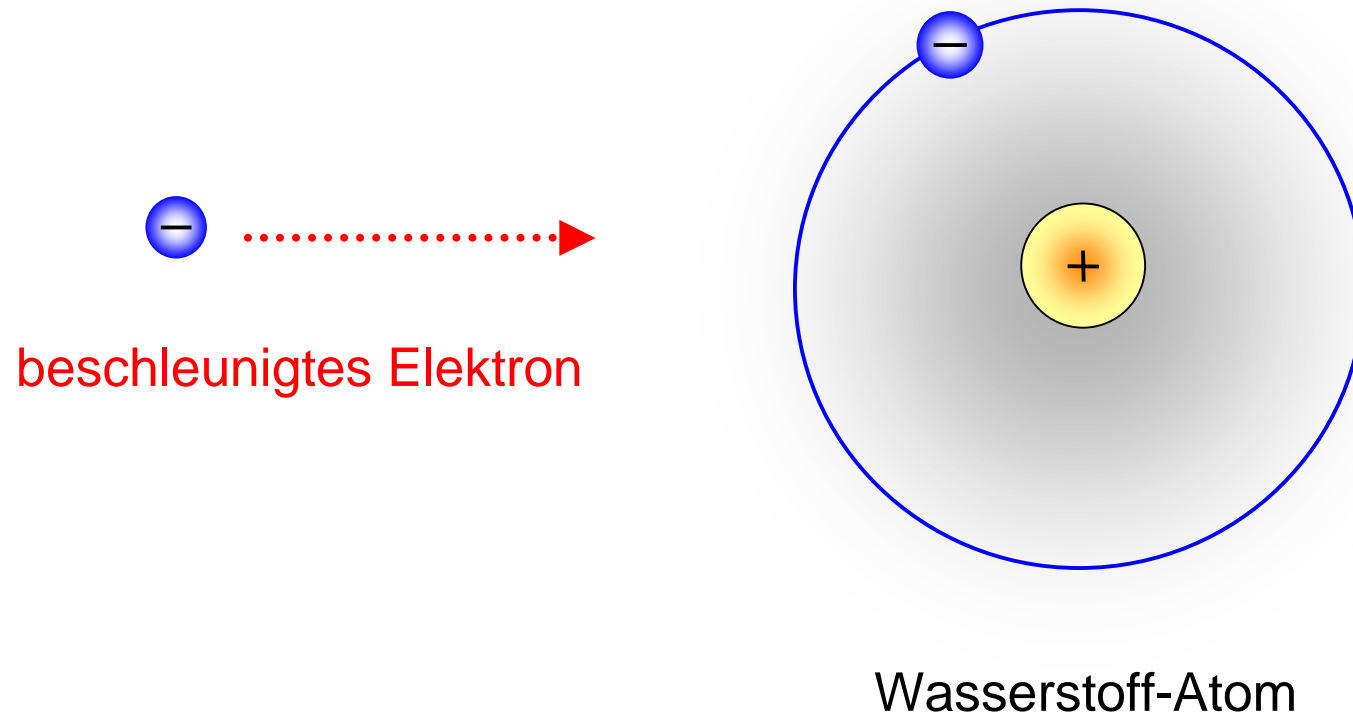
CERN-Protonenquelle



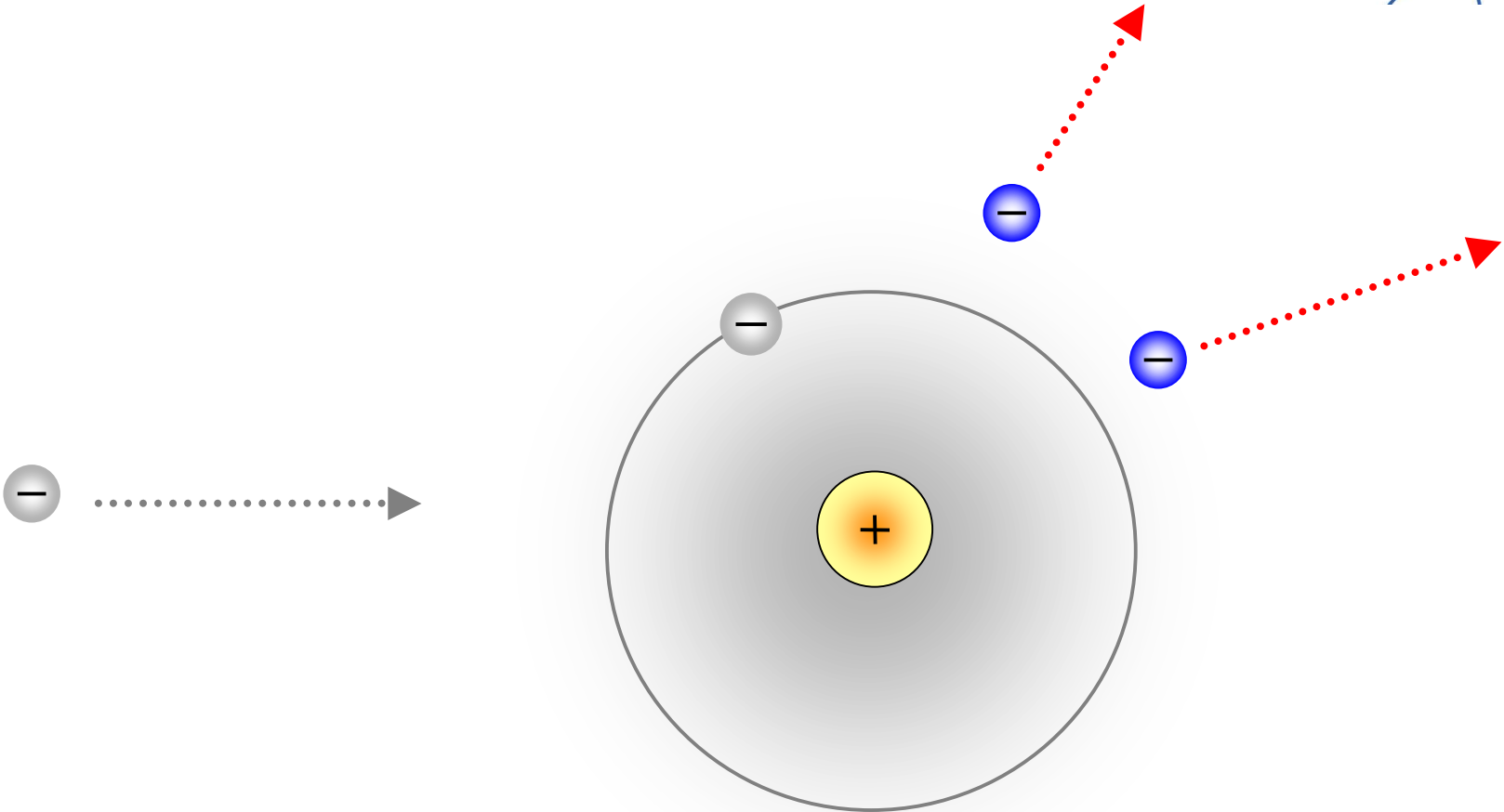
CERN-Protonenquelle



Protonenerzeugung

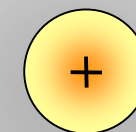


Protonenerzeugung

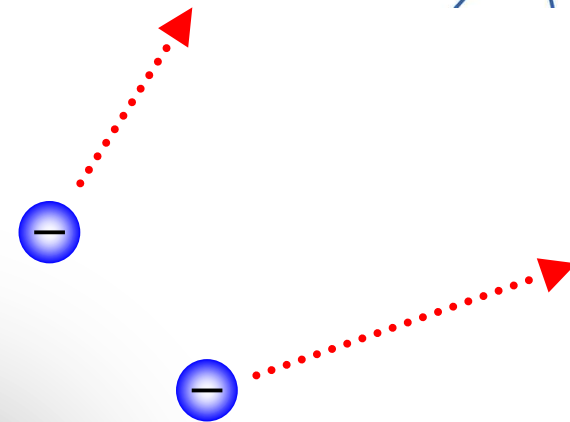


Proton

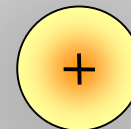
Protonenerzeugung



Proton

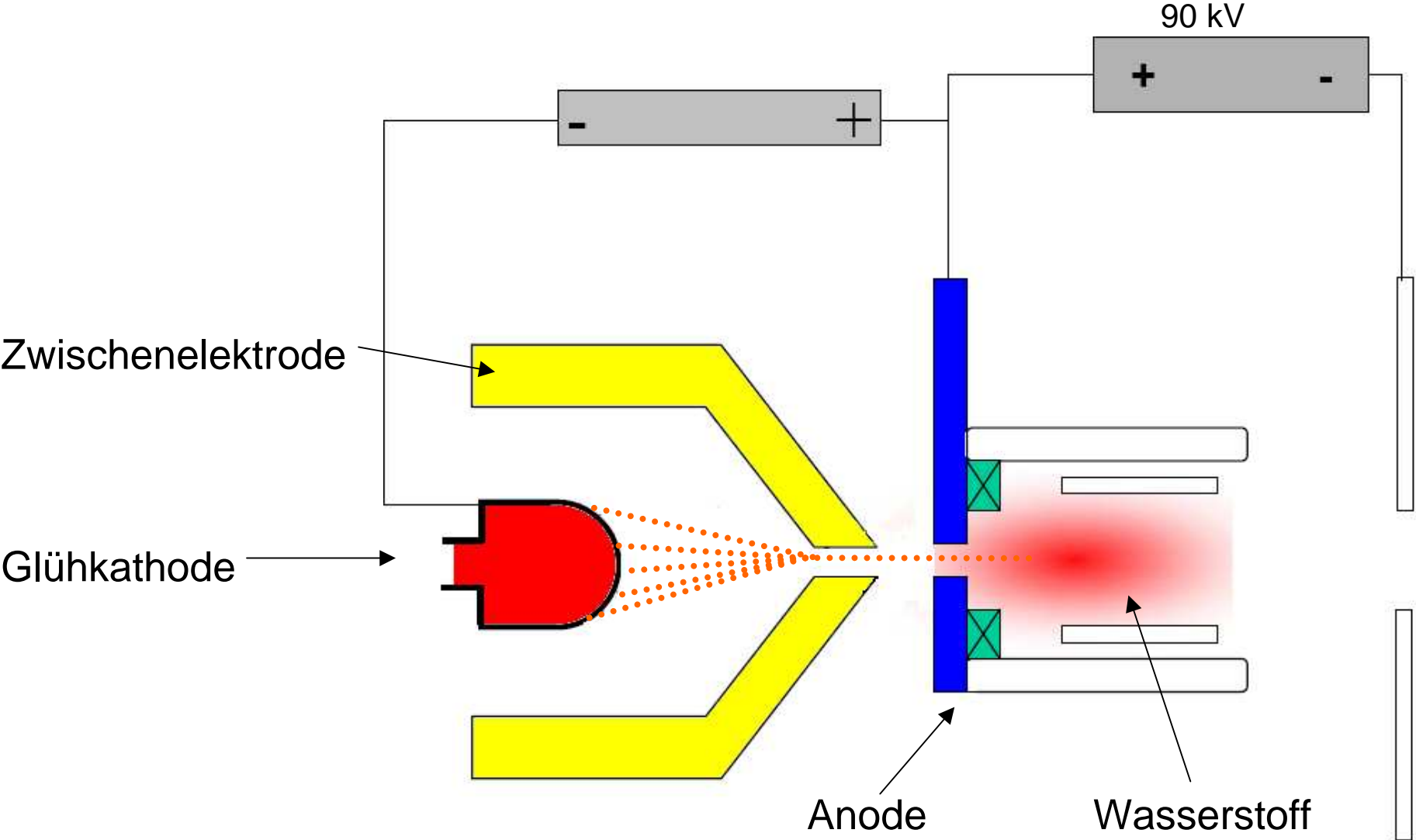


Protonenerzeugung

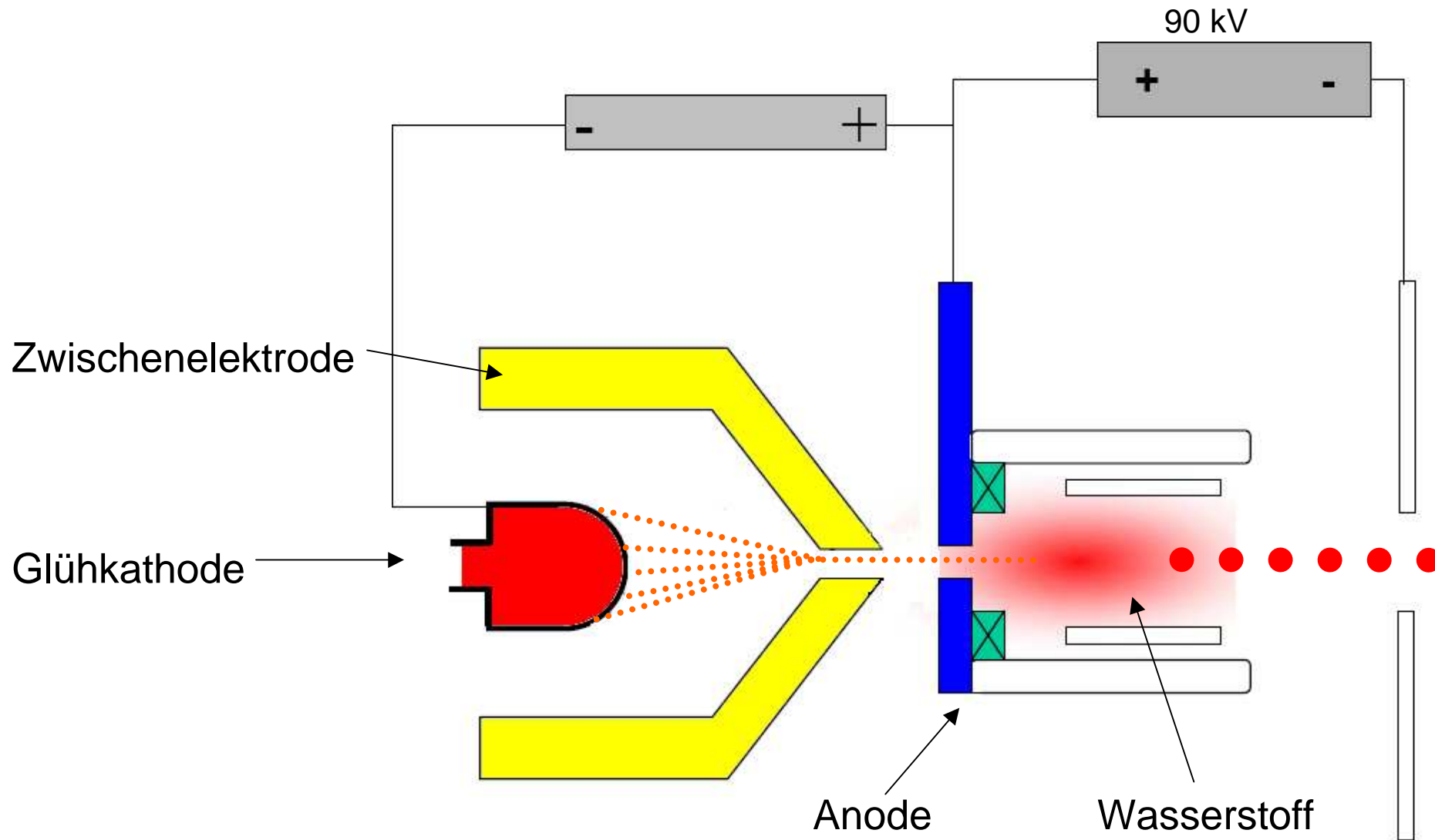


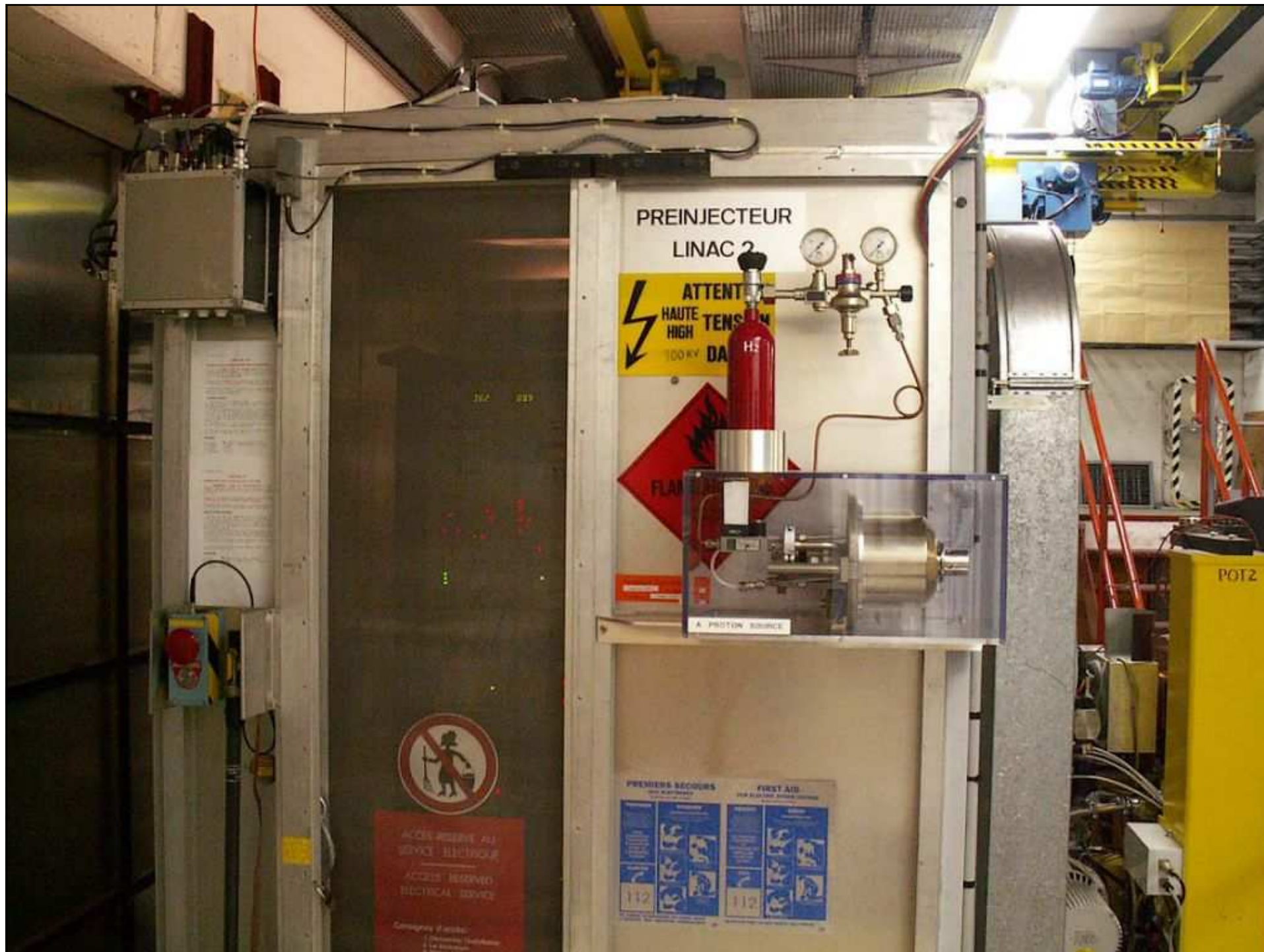
Proton

CERN-Protonenquelle



CERN-Protonenquelle







PREINJECTEUR
LINAC 2

ATTENTION
HAUTE TENSION
HAZARD

FLAMMABLE

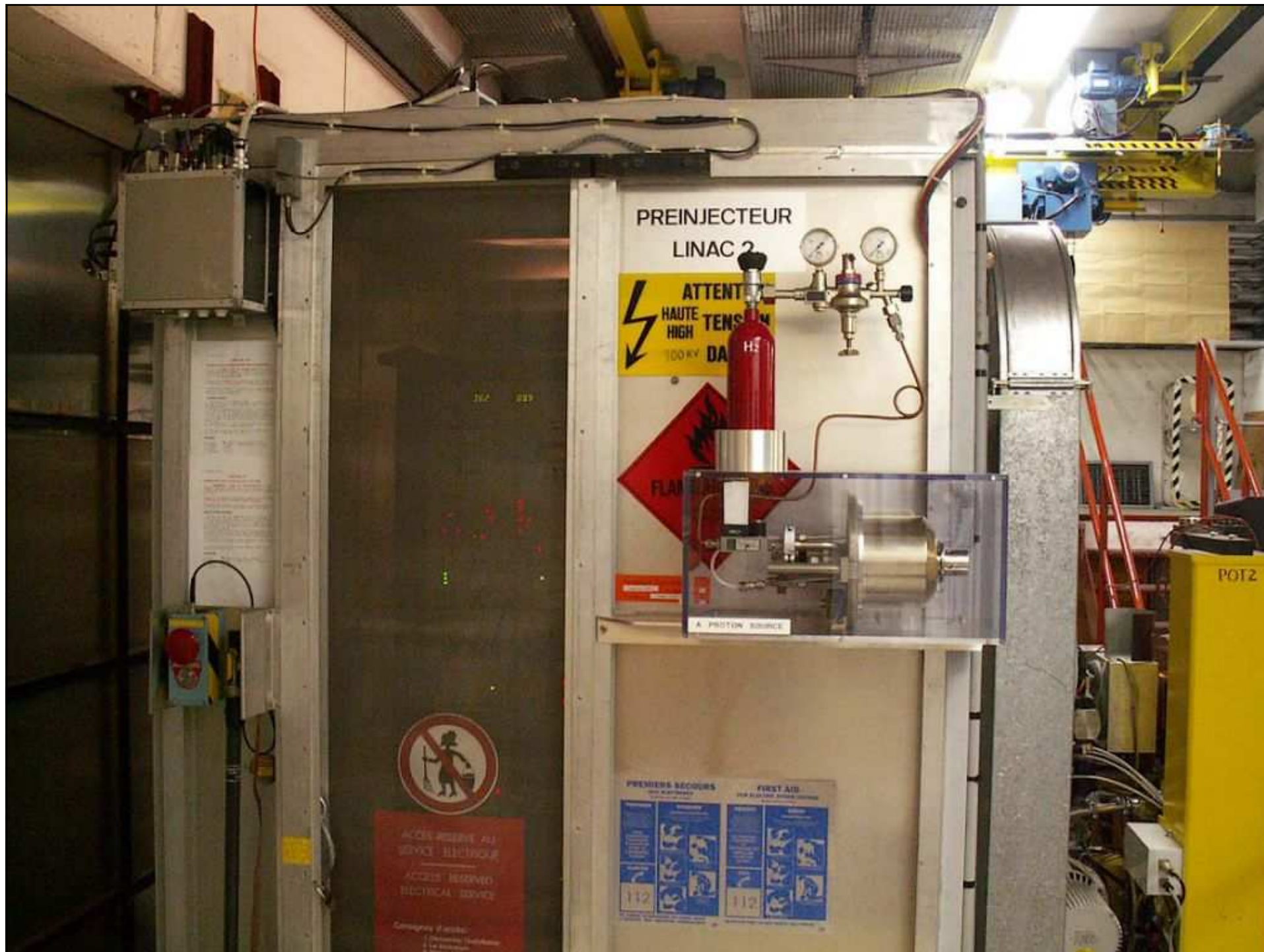
A PROTON SOURCE



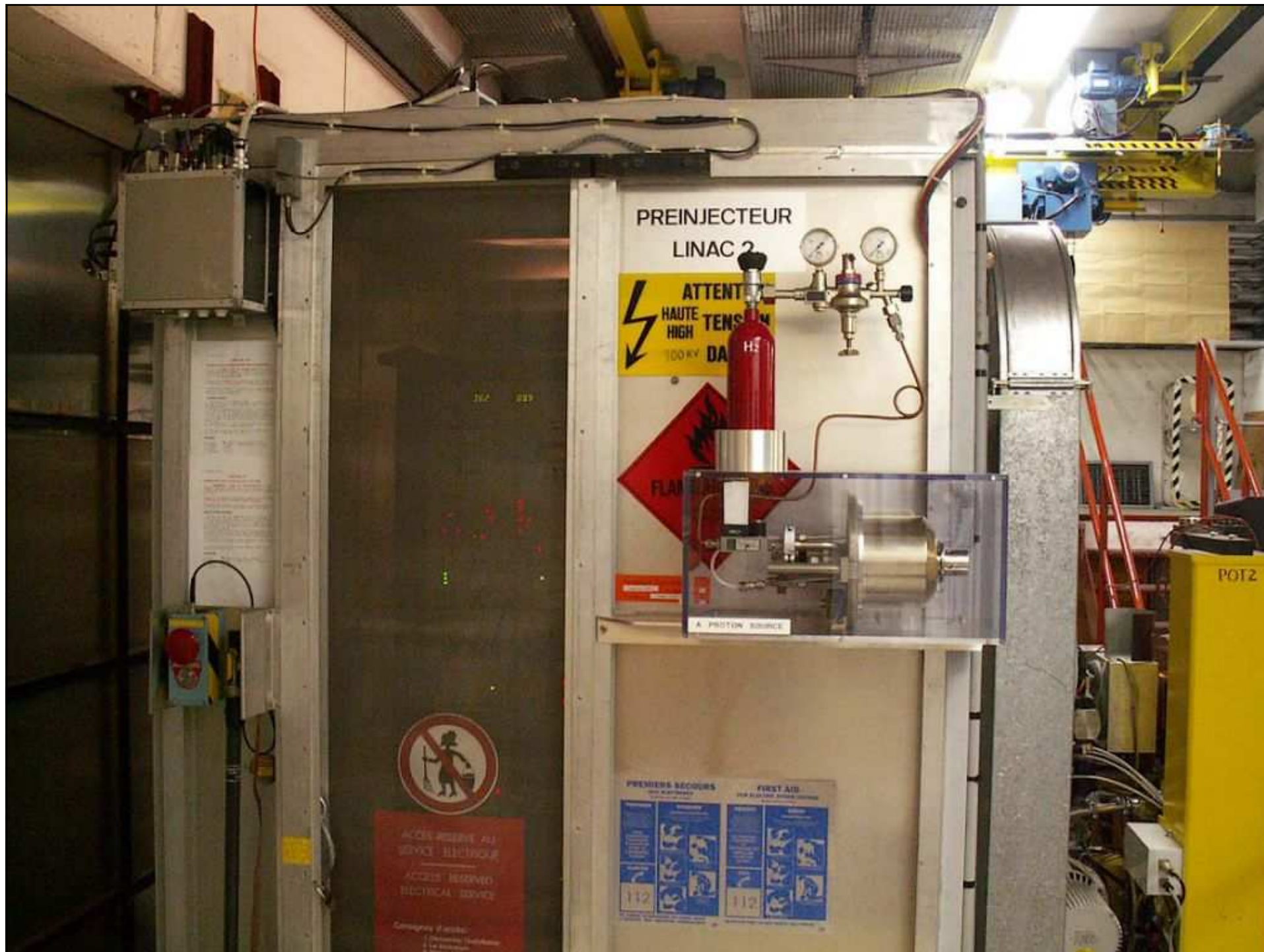
ACCES RESERVE AU
SERVICE ELECTRIQUE
ACCES RESERVE
ELECTRICAL SERVICE
Commissariat de l'Énergie
Atomique
Département de l'Énergie
et des Ressources

PREMIERS SECOURS
FIRST AID
FOR ALL TYPES OF ACCIDENTS

POT2

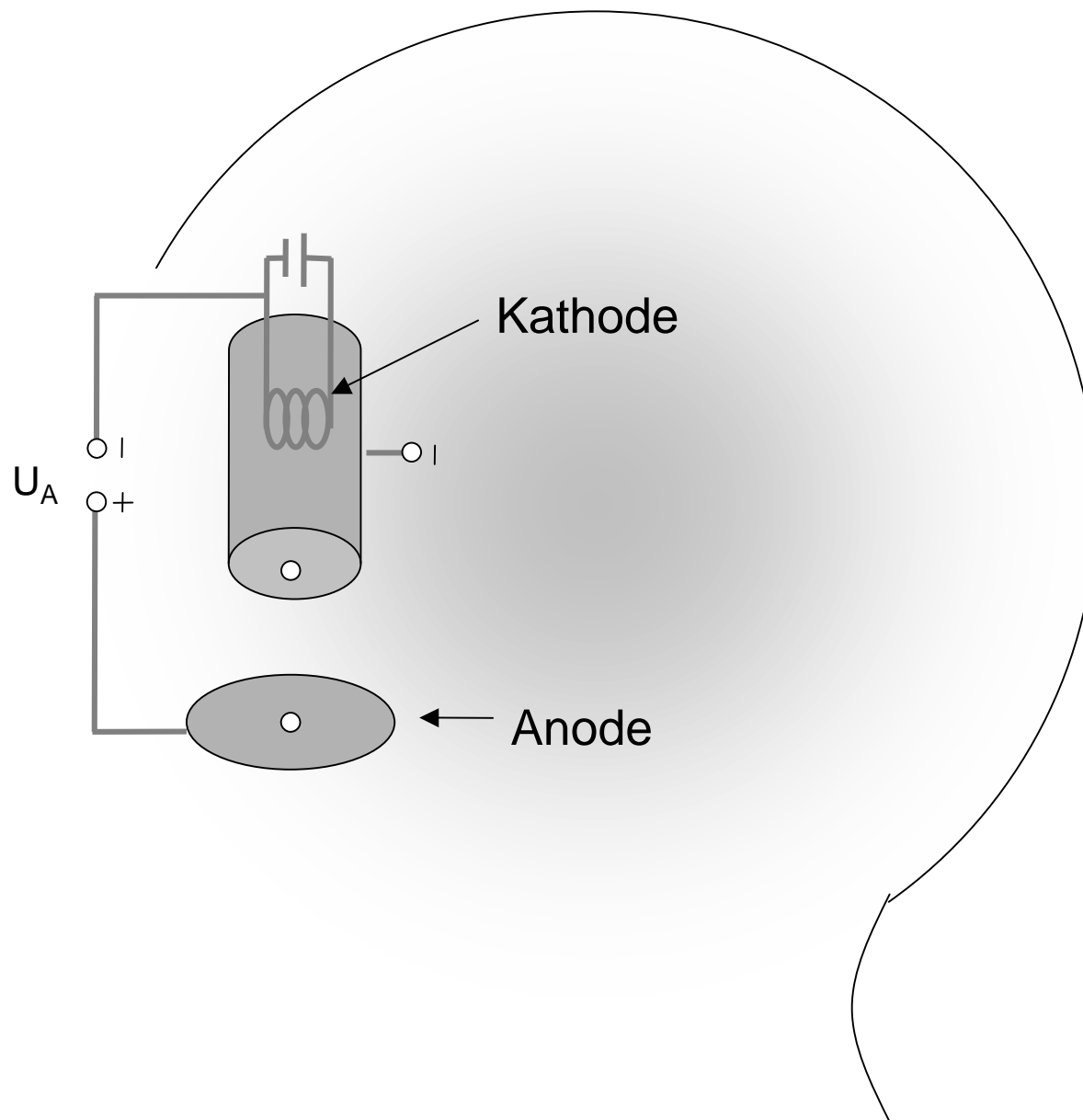




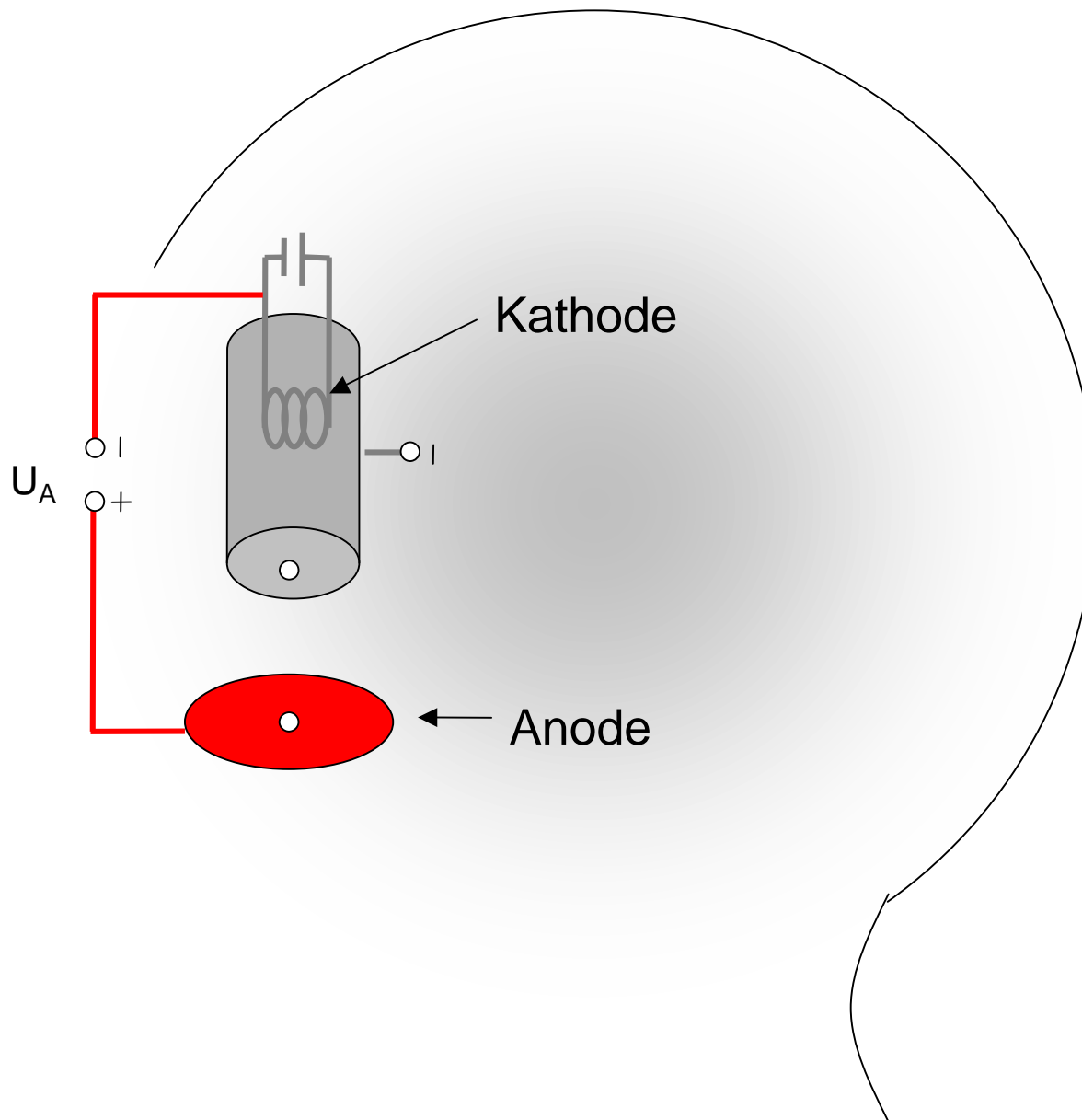




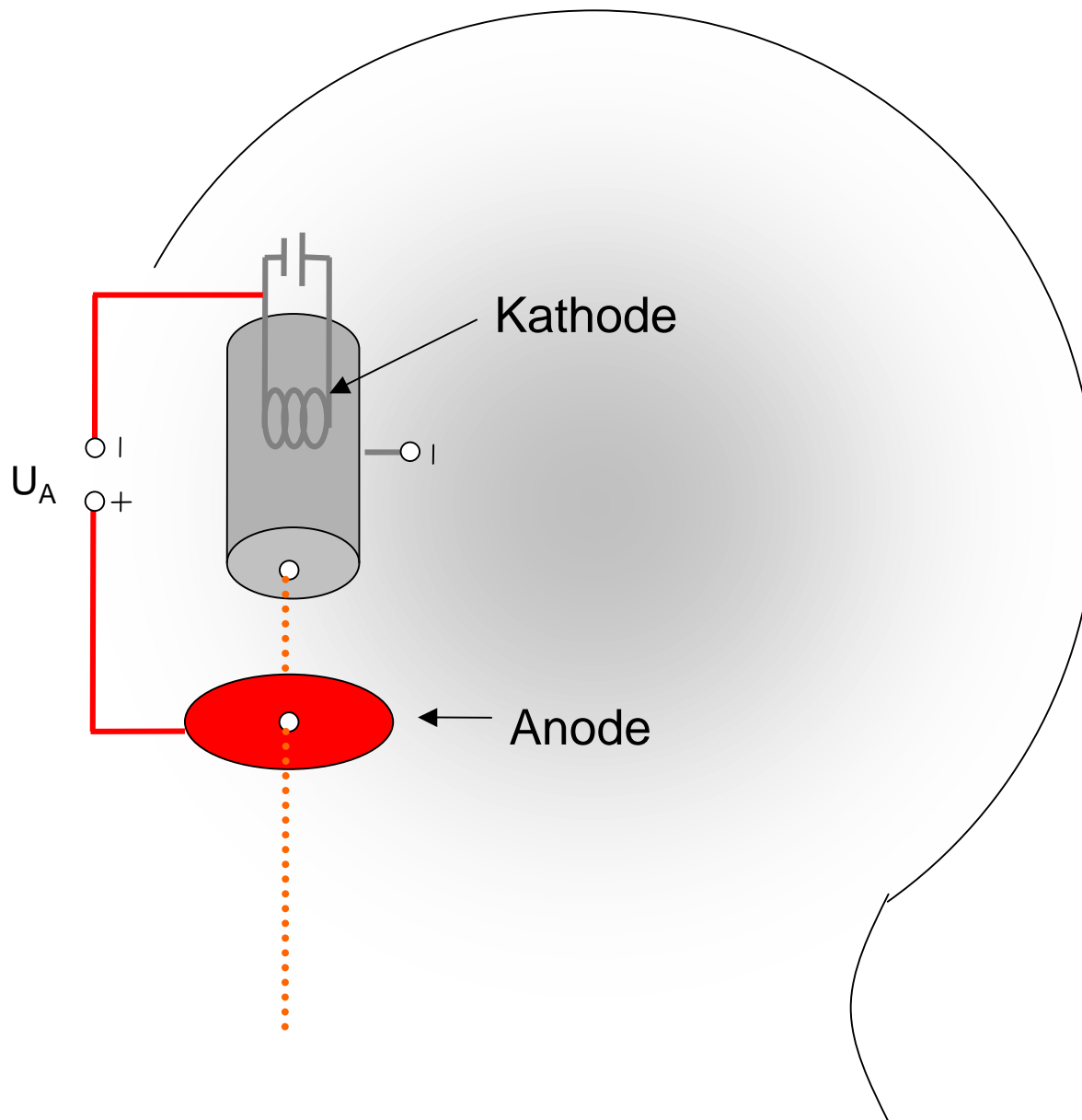
Fadenstrahlröhre



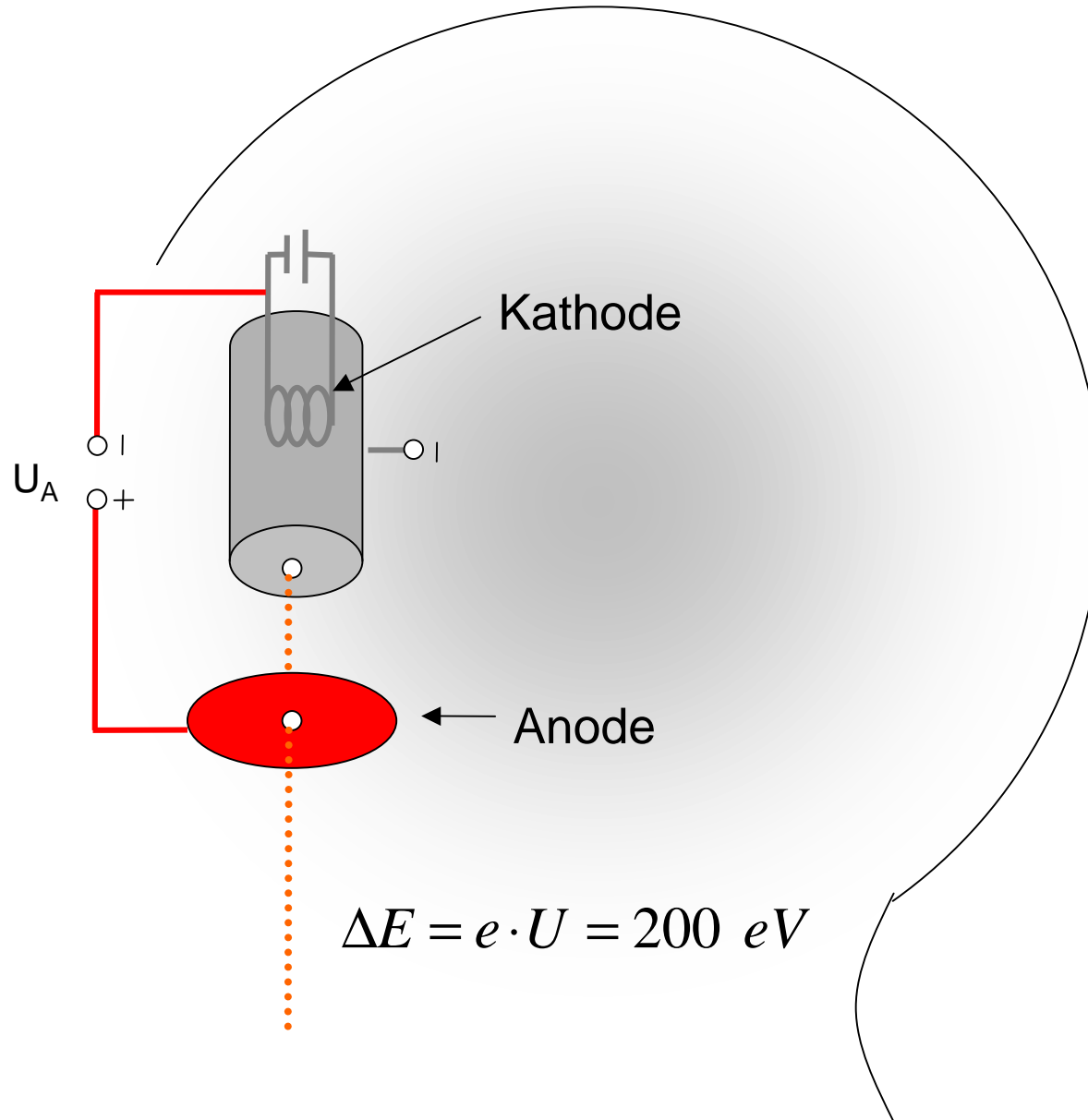
Fadenstrahlröhre



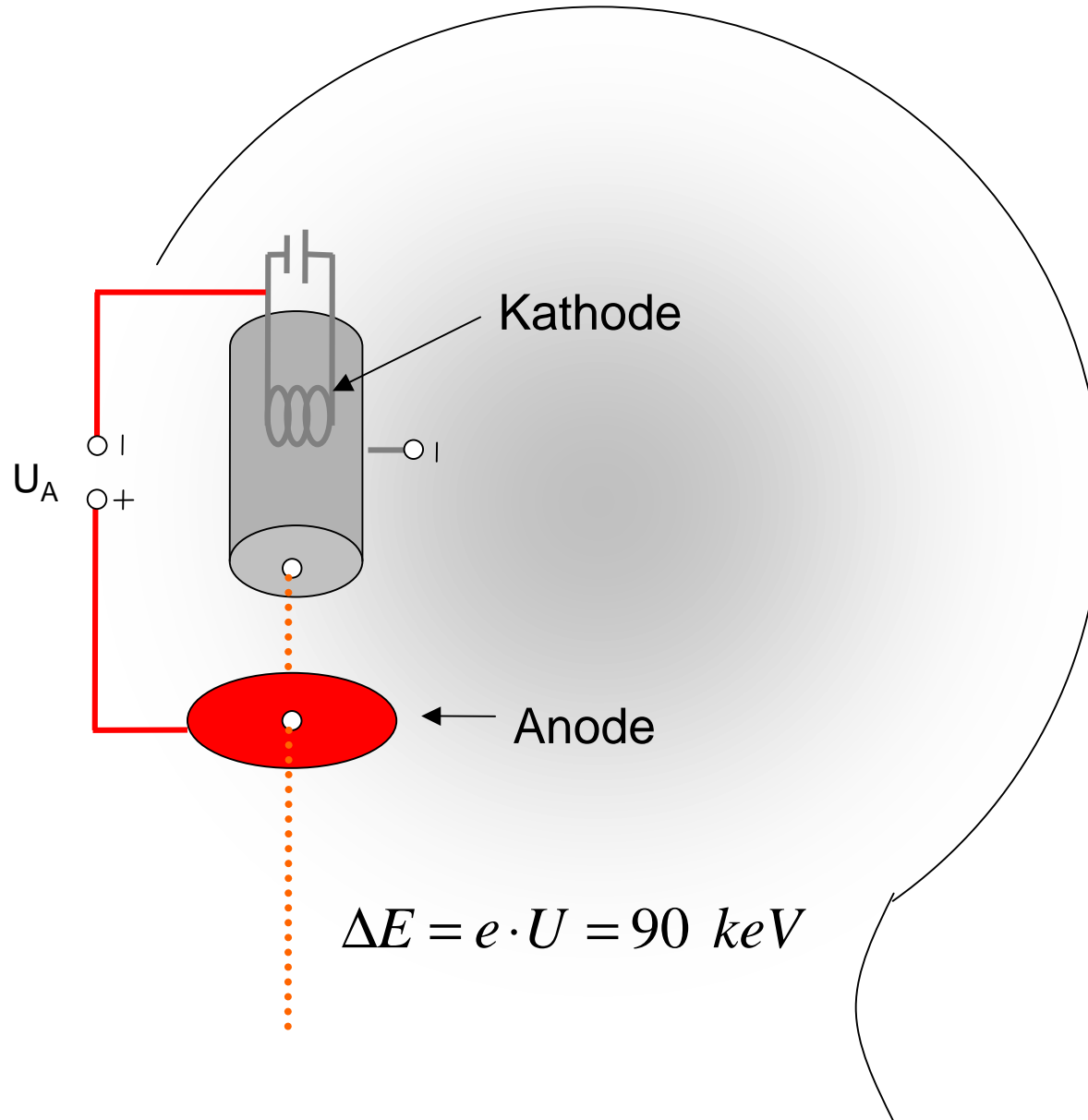
Fadenstrahlröhre



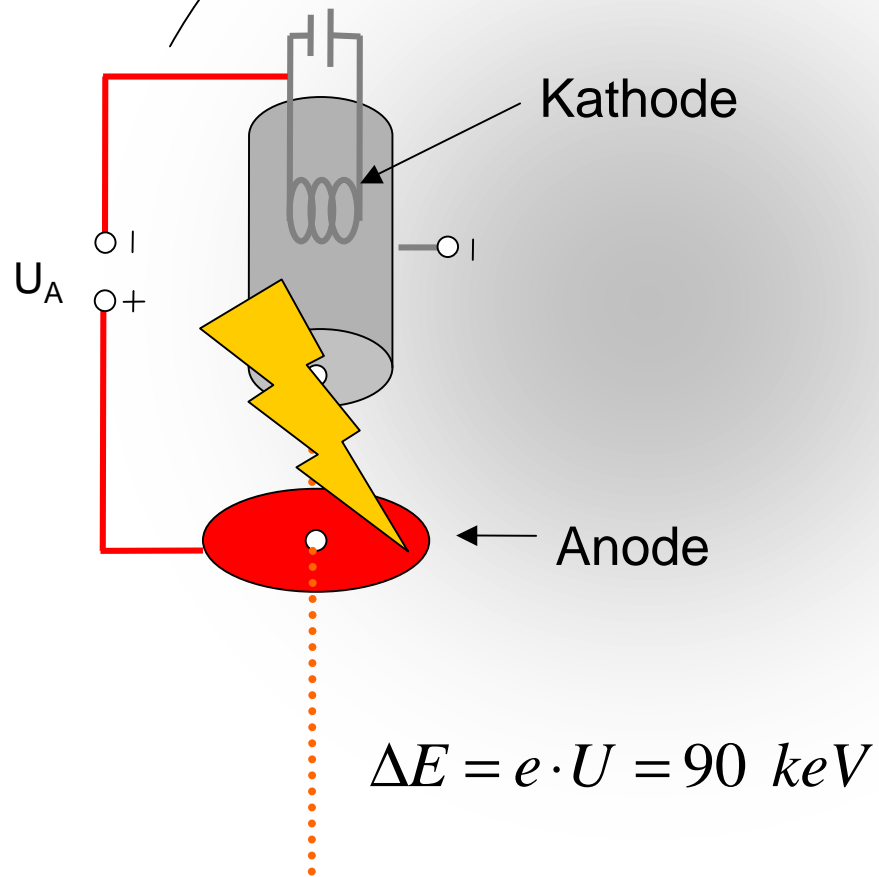
Fadenstrahlröhre



Fadenstrahlröhre



Fadenstrahlröhre

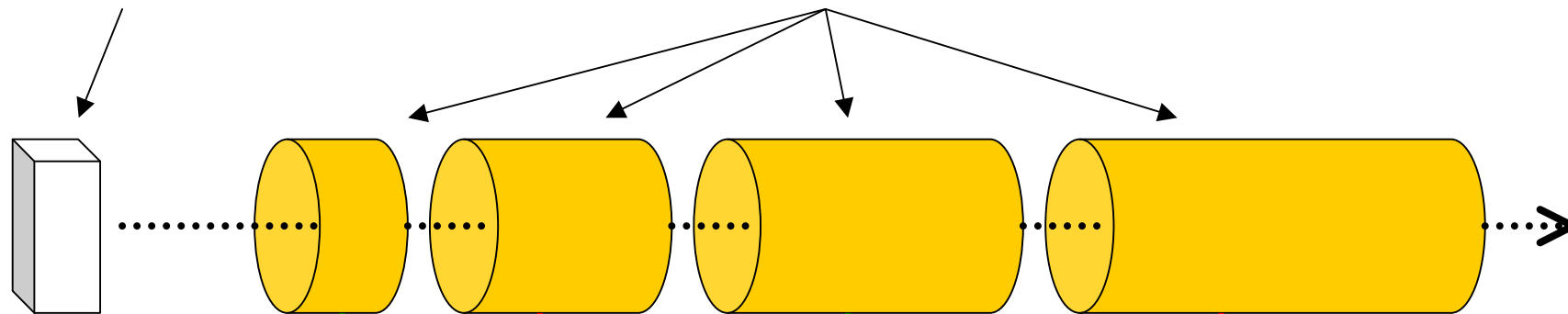


Linearbeschleuniger



Teilchenquelle

Driftröhren aus Metall



Hochfrequenz-Generator
(feste Frequenz)

